



US006087140A

United States Patent [19][11] **Patent Number:** **6,087,140****Cameron et al.**[45] **Date of Patent:** ***Jul. 11, 2000**[54] **MICROBIAL PRODUCTION OF 1,2-PROPANEDIOL FROM SUGAR**[75] Inventors: **Douglas C. Cameron; Anita J. Shaw; Nedim E. Altaras**, all of Madison, Wis.[73] Assignee: **Wisconsin Alumni Research Foundation**, Madison, Wis.

[*] Notice: This patent issued on a continued prosecution application filed under 37 CFR 1.53(d), and is subject to the twenty year patent term provisions of 35 U.S.C. 154(a)(2).

[21] Appl. No.: **08/801,344**[22] Filed: **Feb. 19, 1997**[51] **Int. Cl.⁷** **C12P 7/18**[52] **U.S. Cl.** **435/158**; 435/189; 435/183; 435/252.3; 435/252.33; 536/23.2; 536/23.1[58] **Field of Search** 435/158, 189, 435/252.33, 320.1, 173; 536/23.2, 23.1[56] **References Cited****U.S. PATENT DOCUMENTS**5,677,124 10/1997 DuBois et al. 435/5
5,686,276 11/1997 Laffend et al. 435/158**OTHER PUBLICATIONS**Percy et al. "Cloning, expression, and characterization of methylglyoxal synthase from *Escherichia coli*" American Society for Biochemistry and Molecular Biology Meeting Abstract, Protein Structure Section, No. 1367, Jun. 2-6, 1996.Ackerman, R.S., Cozzarelli, R., Epstein, W. (1974) *J. Bact.* 119:357-362.Cameron, D.C. and C.L. Cooney (1986) *Bio/Technology* 4:651-654.

Franklin Associates, Ltd. (1994) "Life Cycle Assessment of Ethylene Glycol and Propylene Glycol Based Antifreeze," Franklin Associates, Prairie Village, Kansas.

Freedberg, W.B., Kistler, W.S., Lin, E.C.C. (1971) *J. Bact.* 108:137-144.Gait, A.J. "Propylene Oxide," In: E.G. Hancock (ed.), *Propylene and its Industrial Derivatives*, p. 273-297, John Wiley and Sons, NY, NY (1973).Ghalambor, M.A.; Heath, E.C. (1962) *J. Biol. Chem.* 237:2427-2433.Hill, J.E., Myers, A.M., Koerner, T.J., Tzagoloff, A. (1986) *Yeast* 2:163-167.Hopper, D.J., and Cooper, R.A. (1972) *Biochem J.* 128:321-329.Kadner, R.J., Murphy, G.P., Stephens, C.M. (1992) *J. Gen. Microbio.* 138:2007-2014.Koob, M.D., Shaw, A.J., and Cameron, D.C. (1994) *Proc. N.Y. Acad. Sci.* 745:1-3.Old, S.E., Sato, S., Kador, P.F., and Carper, D.A. (1990) *Proc. Natl. Acad. Sci.* 87:4942-4945.

Sambrook, Fritsch, and Maniatis (1986) "Molecular Cloning, A Laboratory Manual," 2nd Ed., Strategies for Cloning in Plasmid Vectors, 1.53-1.59 and Ligation Reactions, 1.63-1.73.

Sawada, H.; Takagi, Y. (1964) *Biochim. Biophys. Acta*, 92:26-32.Simon, E.S., Whitesides, G.M., Cameron, D.C., Weitz, D.J., and Cooney, C.L. (1987) *J. Org. Chem.* 52:4042-4044.Sridhara, S.; Wu, T.T. (1969) *J. Biol. Chem.* 244:5233-5238.Tran-Din, K. and G. Gottschalk (1985) *Arch. Microbiol.* 142:87-92.Jagt et al. "Reduction of trioses by NADPH-dependent aldo-keto reductases" *J. Biol. Chem.* 267, 4364-4369, Mar. 1992.Clarke et al. "Nucleotide sequence of the pntA and pntB genes coding the pyridine nucleotide transhydrogenase of *Escherichia coli*" *Eurp. J. Biochem.* 158, 647-653, 1986.

Carper et al. Aldose reductase and p-crystalline belong to the same protein superfamily as aldehyde reductase 220, 209-213, Aug. 1987.

Conway et al. "{Similarity of *Escherichia coli* propanediol oxidoreductase (fucO Product) and unusual Dehydrogenase from *Zymomonas mobilis* and *Saccharomyces cerevisiae*" *J. Bacteriol.* 171, 3754-3759, Jul. 1989.*Primary Examiner*—Nashaat Nashed
Attorney, Agent, or Firm—DeWitt Ross & Stevens S.C.[57] **ABSTRACT**

Microorganisms which ferment common sugars into 1,2-propanediol, synthetic operons to effect the transformation, and methods to produce 1,2-propanediol by fermentation of common sugars using the transformed microorganisms are disclosed.

10 Claims, 7 Drawing Sheets

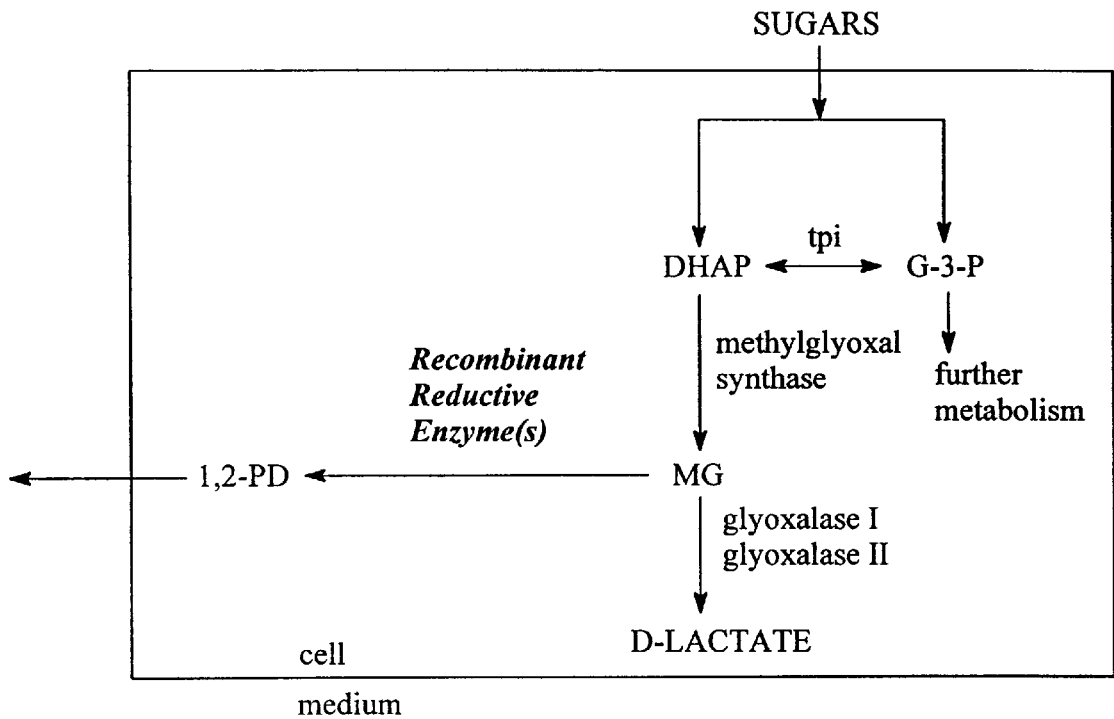


FIG. 1

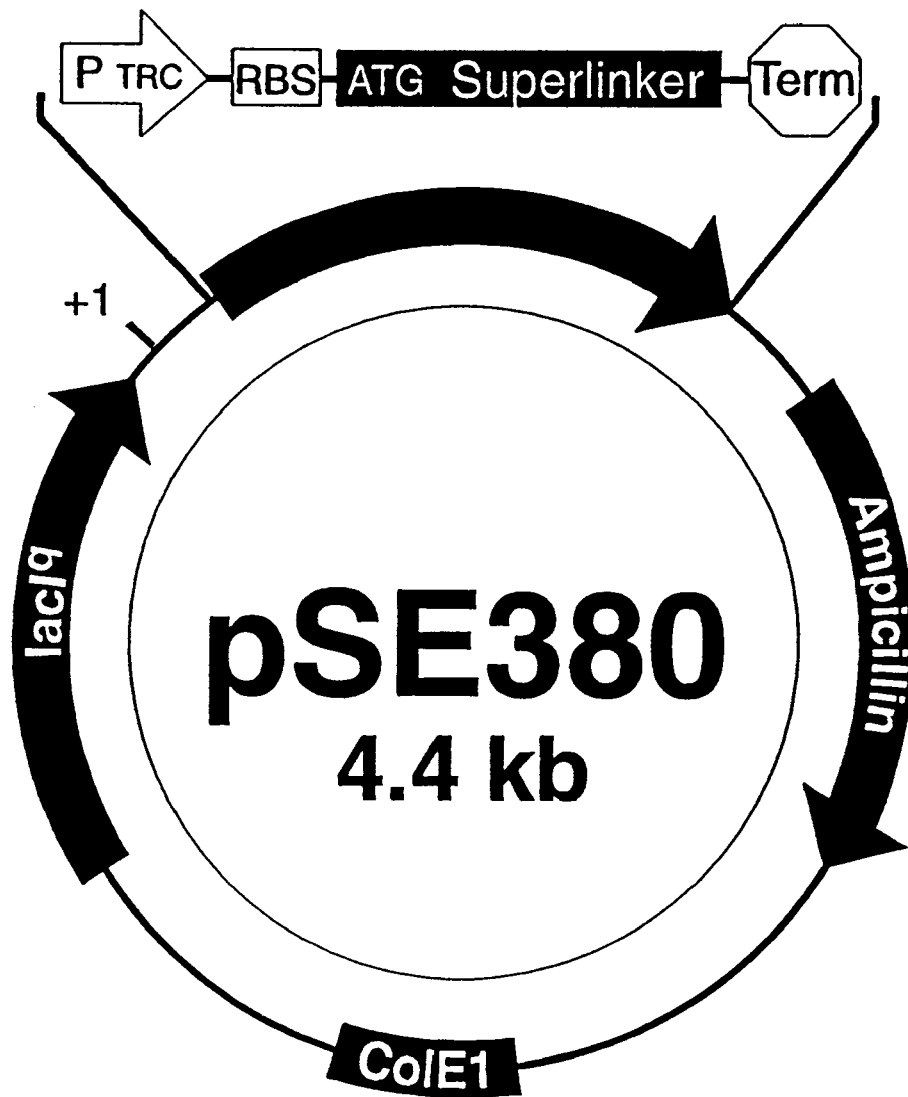


FIG. 2

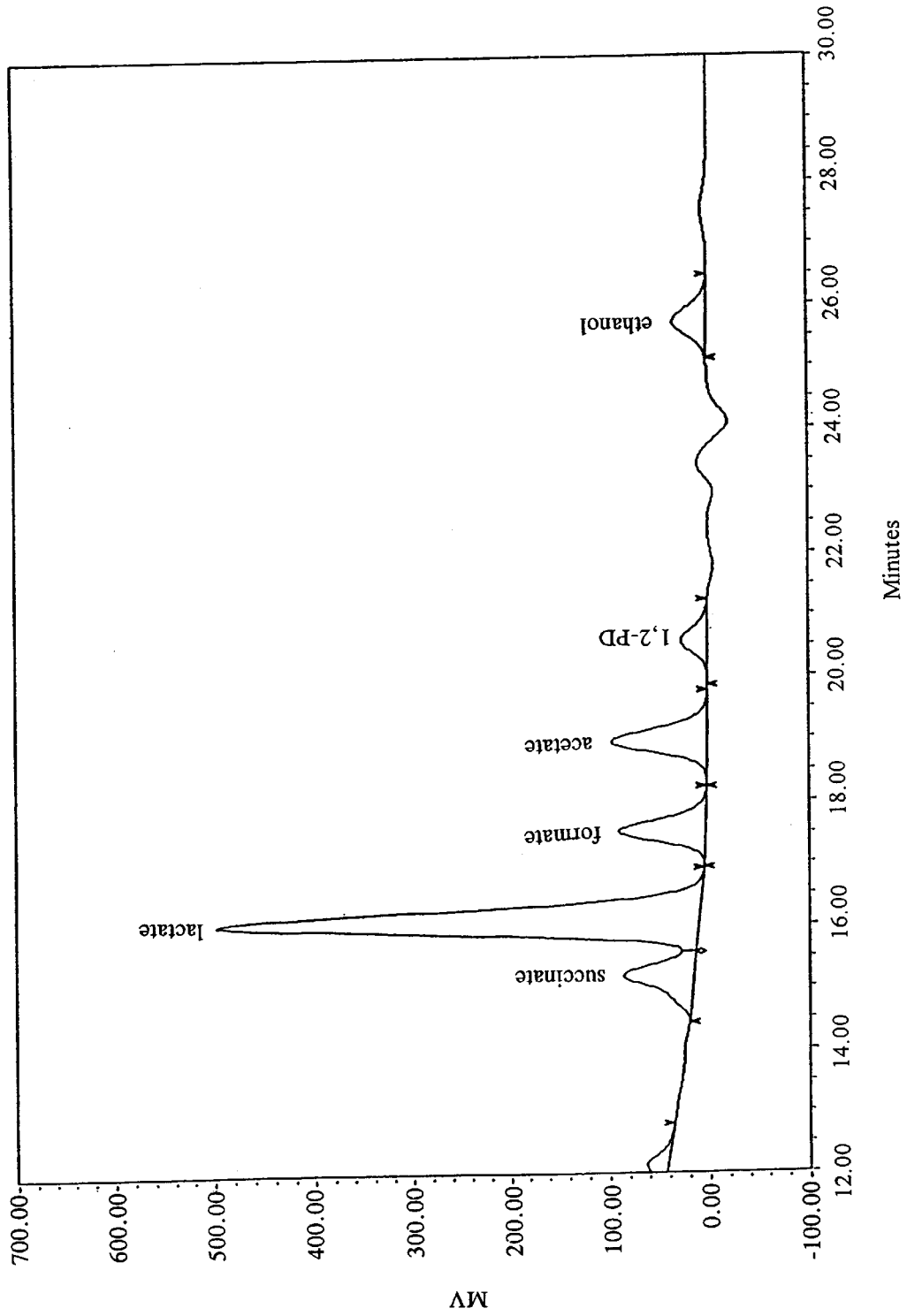


FIG. 3

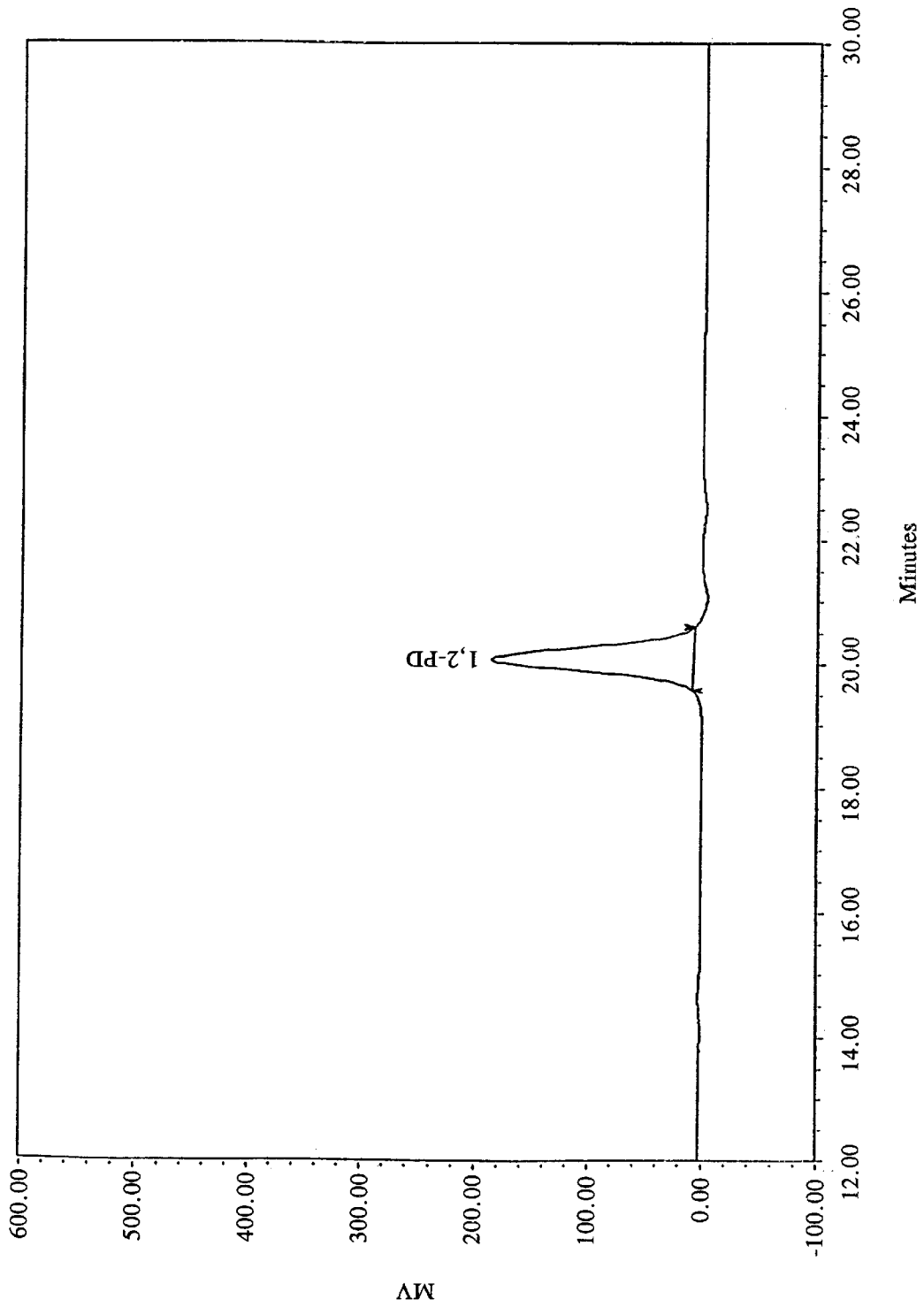


FIG. 4

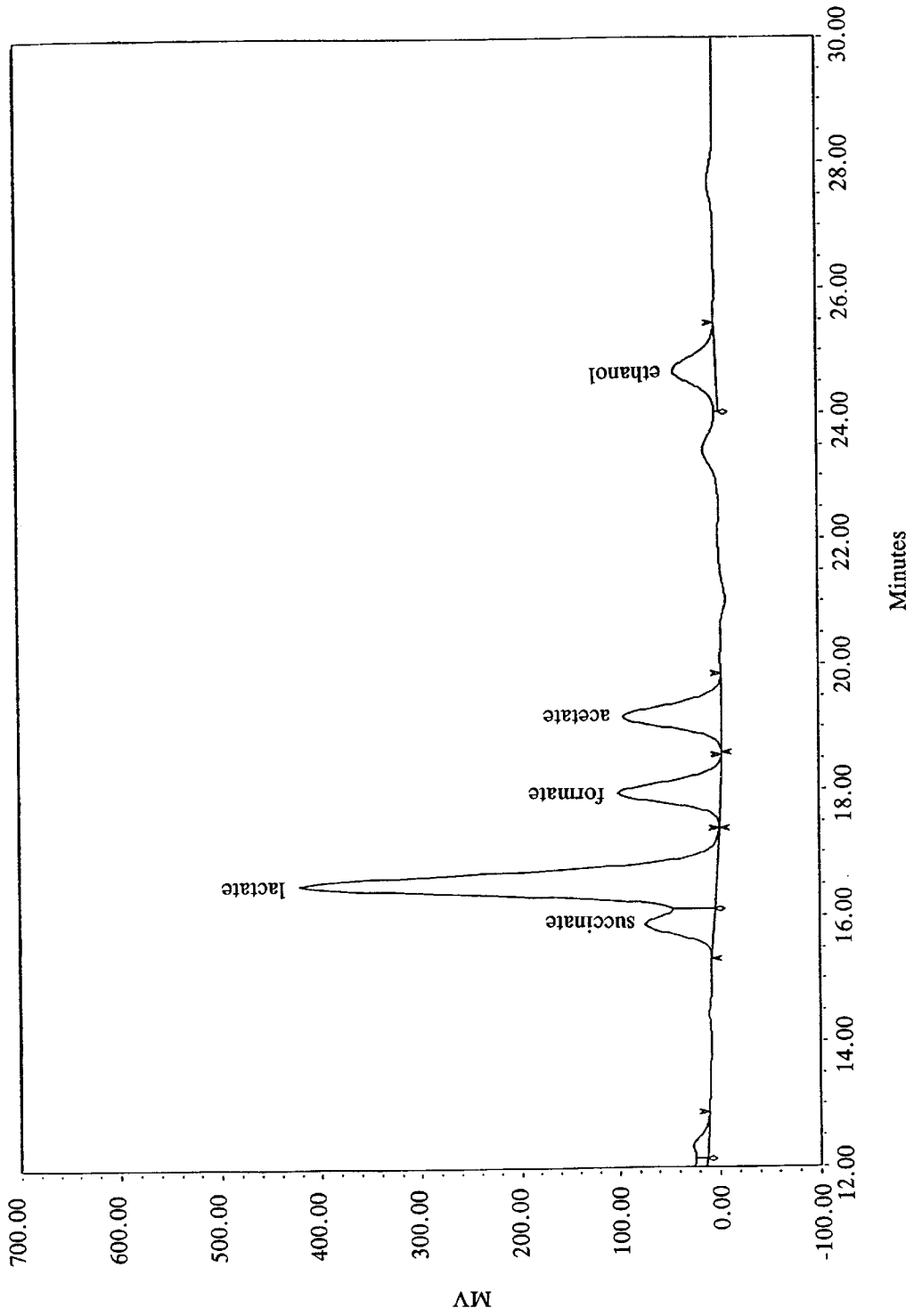


FIG. 5

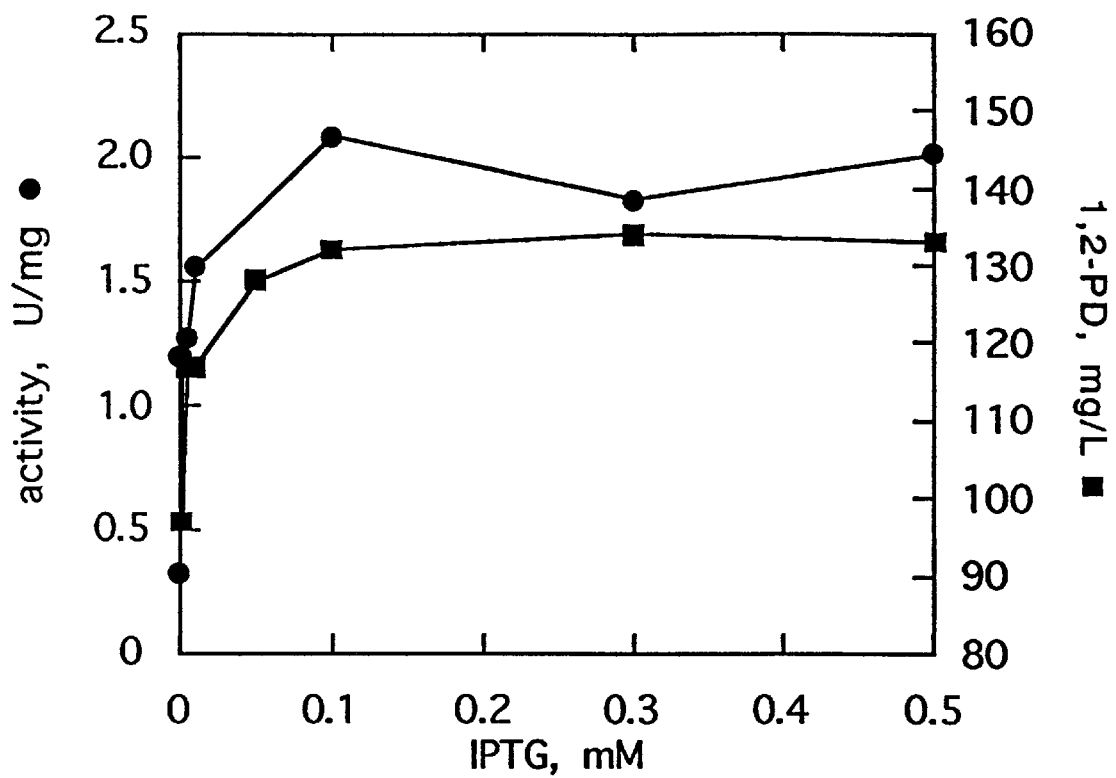


FIG. 6

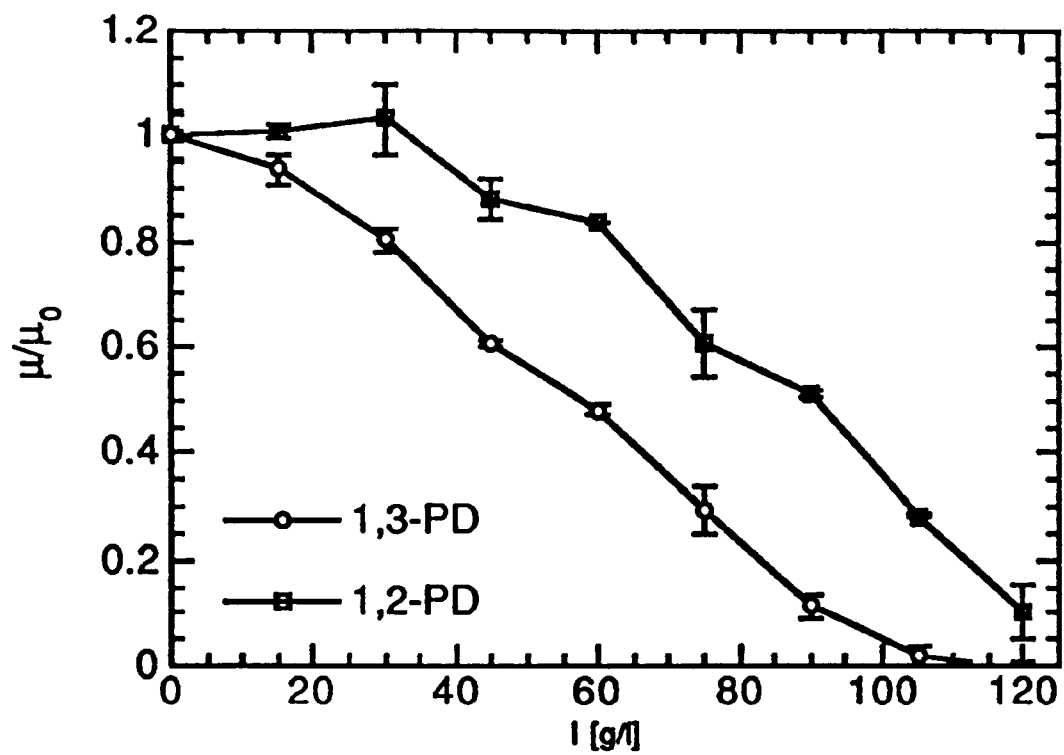


FIG. 7

MICROBIAL PRODUCTION OF 1,2-PROPANEDIOL FROM SUGAR

This invention was made with United States government support awarded by the following agencies: Environmental Protection Agency, Grant No. 900713Z3; National Institutes of Health, Grant No. GM08349. The United States government has certain rights in this invention.

FIELD OF THE INVENTION

The invention is drawn to microorganisms and their use in the production of 1,2-propanediol via microbial fermentation of common sugars. More specifically, the present invention is drawn to recombinant microorganisms having reductive enzyme activity or activities which enable the recombinant microorganism to ferment common sugars to 1,2-propanediol.

BIBLIOGRAPHY

Complete bibliographic citations to the references mentioned below are included in the Bibliography section, immediately preceding the claims. Each of the references mentioned below is incorporated herein by reference in its entirety.

DESCRIPTION OF THE PRIOR ART

1,2-Propanediol (1,2-PD; also known as propylene glycol) is a major commodity chemical with an annual production greater than one billion pounds in the United States. The major utilization of 1,2-PD is in unsaturated polyester resins, liquid laundry detergents, pharmaceuticals, cosmetics, antifreeze and de-icing formulations.

1,2-PD is conventionally produced from petrochemicals. Unfortunately, several toxic chemicals, such as chlorine, propylene oxide, and propylene chlorohydrin are either required or are produced as by-products in the conventional synthesis. In the conventional route, 1,2-PD is produced by the hydration of propylene oxide, which is obtained from propylene. The synthetic process produces racemic 1,2-PD, an equimolar mixture of the two enantiomers. This chemical process has a number of disadvantages, including the use of large quantities of water to minimize the production of polyglycols. The major problem, however, with the conventional synthetic route to 1,2-PD arises in the production of its intermediate, propylene oxide.

Propylene oxide is manufactured by one of two standard commercial processes: the chlorohydrin process or the hydroperoxide process. The chlorohydrin process involves toxic chlorinated intermediates and the use of caustic or lime. Additionally, this process may result in air emissions of propylene chlorohydrin and chlorine. (Franklin Associates, Ltd. (1994).) The hydroperoxide process involves oxidation of propylene by an organic hydroperoxide and results in the stoichiometric co-production of either tertbutanol or 1-phenyl ethanol. This makes the economics of the production of propylene oxide via the hydroperoxide route directly related to the market for the co-produced byproducts. (Gait (1973).)

It is known that 1,2-PD is produced by several organisms when grown on exotic sugars. As early as 1937, the fermentation of L-rhamnose to 1,2-PD (later shown to be the S enantiomer) was described by Kluyver and Schnellen (1937). In *E. coli* and a variety of other microorganisms, L-rhamnose and L-fucose are metabolized to L-lactaldehyde and dihydroxyacetone phosphate. (Sawada and Takagi

(1964) and Ghalmor and Heath (1962), respectively.) Under aerobic conditions, L-lactaldehyde is oxidized in two steps to pyruvate (Sridhara and Wu (1969)). Under anaerobic conditions, however, L-lactaldehyde is reduced to S-1,2-PD by a nicotinamide adenine nucleotide (NAD)-linked 1,2-propanediol oxidoreductase (*EC* 1.1.1.77). The S-1,2-PD produced diffuses into the extra-cellular medium.

Although a variety of microorganisms, including *E. coli*, produce S-1,2-PD from 6-deoxyhexose sugars, Obradors et al. (1988), this route is not commercially feasible because these sugars are extremely expensive. The least expensive of these 6-deoxyhexose sugars, L-rhamnose, currently sells for approximately \$325 per kilogram (Pfanstiehl Laboratories, Chicago, Ill.).

In the mid-1980's, organisms capable of fermenting common sugars, such as glucose and xylose, to R-1,2-PD were discovered. See, for instance, Tran-Din and Gottschalk (1985). *Clostridium sphenoides* produces R-1,2-PD via a methylglyoxal intermediate. In this pathway, dihydroxyacetone phosphate (DHAP) is converted to methylglyoxal (MG) by the action of methylglyoxal synthase. The MG is reduced stereospecifically to give D-lactaldehyde. The D-lactaldehyde is then further reduced to give R-1,2-PD. The commercial production of 1,2-PD by *C. sphenoides* is severely limited, however, by the fact it is only produced under phosphate limitation; it is both difficult and expensive to obtain commercial-grade medium components which are free of phosphate. Additionally, only low titers of 1,2-PD are achieved.

Thermoanaerobacterium thermosaccharolyticum HG-8 (formerly *Clostridium thermosaccharolyticum*, ATCC 31960) also produces R-1,2-PD via methylglyoxal. Cameron and Cooney (1986). As with *C. sphenoides*, DHAP is converted to MG. The MG is then reduced at the aldehyde group to yield acetol. The acetol is then further reduced at the ketone group to give R-1,2-PD. For both *C. sphenoides* and *T. thermosaccharolyticum* HG-8, the enzymes responsible for the production of 1,2-PD have not been identified or cloned.

SUMMARY OF THE INVENTION

The invention is directed to a method of producing 1,2-propanediol by fermentation of sugars. The method comprises culturing a microorganism which expresses one or more enzymes which catalyze production of 1,2-propanediol from intracellular methylglyoxal in a medium containing a sugar carbon source other than a 6-deoxyhexose sugar, whereby the sugar carbon source is metabolized into 1,2-propanediol. Preferably, the method utilizes a recombinant organism containing one or more recombinant genes whose encoded gene products catalyze the reduction of methylglyoxal to 1,2-propanediol.

More specifically, the invention is directed to a method of producing 1,2-propanediol by fermentation with recombinant *E. coli* or yeast which comprises culturing a recombinant *E. coli* or yeast in a medium containing a sugar carbon source selected from the group consisting of arabinose, fructose, galactose, glucose, lactose, maltose, sucrose, xylose, and combinations thereof. The recombinant *E. coli* or yeast includes one or more recombinant genes which encode enzymes selected from the group consisting of aldose reductase, glycerol dehydrogenase, or combinations thereof.

The invention is also drawn to a synthetic operon which enables the production of 1,2-propanediol in a microorganism transformed to contain the operon. The operon includes one

or more genes whose encoded gene products catalyze the reduction of methylglyoxal to 1,2-PD and a promoter sequence operationally linked to the one or more genes.

In a preferred embodiment, the synthetic operon includes at least one promoter sequence, a gene selected from the group consisting of an aldose reductase gene, a glycerol dehydrogenase gene, and combinations thereof; and a gene selected from the group consisting of a methylglyoxal synthase gene, a pyridine nucleotide transferase gene, and combinations thereof, wherein the genes are operationally linked to the promoter.

The invention is also drawn to *E. coli* transformed to contain the synthetic operon.

In short, the present invention is drawn to the use of microorganisms, preferably recombinant *E. coli* or *S. cerevisiae*, which express reductive enzyme activity which enables them to produce 1,2-PD, presumably via a reductive pathway leading from methylglyoxal to acetol (or lactaldehyde) to 1,2-PD.

If a recombinant microorganism is utilized, the gene sequences encoding the reductive enzyme activity may reside on plasmids within the microorganism, or the gene sequences may be integrated into the chromosome. It is preferred that the recombinant gene sequences be integrated into the genome of the microorganism.

The invention utilizes microorganisms which express enzymes which enable the production of 1,2-PD from the fermentation of common sugars. As used herein, the term "common sugars" refers to readily available sugars including, but not limited to, arabinose, fructose, galactose, glucose, lactose, maltose, sucrose, and xylose. Specifically excluded from the term "common sugars" are 6-deoxyhexose sugars such as rhamnose and fucose.

While not being limited to a particular cellular mode of action, it is thought that by properly manipulating enzyme activity, intracellular MG is enzymatically reduced to yield 1,2-PD, which is then secreted into the extracellular environment.

The production of MG in the host microorganism can also be simultaneously increased, thereby increasing the production of 1,2-PD. Methylglyoxal production can be maximized by fermenting under phosphate limitation or with the addition of cAMP, as well as by several other methods known to the art. Additionally, selection of suitable host cells, such as methylglyoxal over-producing host cells or mutants which steer metabolism toward the production of 1,2-PD rather than other metabolites, can be utilized.

The invention is also drawn to a synthetic operons for transforming a host cell. When incorporated into a host cell, the operon directs the transformed host to produce enzyme activity which converts MG to 1,2-PD and may optionally include genetic elements to increase MG production or to increase the reducing power of the cell. Preferably, the operon includes one or more genes which encode enzymes necessary for expression of aldose reductase activity or glycerol dehydrogenase activity and one or more genes for increased production of MG in the host cell. The operon further includes upstream and/or downstream regulatory elements to control the expression of the gene product(s).

The synthetic operon sequence can be incorporated into any number of suitable and well-characterized plasmid vectors for incorporation into prokaryotic or eukaryotic host cells.

A major advantage of the present invention is that microbial fermentation provides a clean and "environmentally

friendly" synthetic route to 1,2-PD. The microbial process uses as a substrate a renewable sugar such as glucose or xylose (found in agricultural crops) or lactose (found in dairy industry wastes). Suitable sugars are also produced in commodity amounts from corn and sugar cane and from lignocellulosic biomass.

Also, the microbial process produces no toxic wastes. The byproducts of fermentation are carbon dioxide, alcohols, and organic acids, all of which can be purified as valuable co-products or used as animal feed.

Another distinct advantage of the invention is that it provides a unique route to 1,2-PD from common sugars, a cheap, renewable, and readily available resource.

A further advantage of the present invention is that microbial processes are straightforward to operate and do not involve high temperatures and pressures. Large fermentation facilities such as those used for the production of ethanol can be readily adapted to the production of 1,2-PD.

Another advantage of the invention is that while MG is toxic to cells, by promoting overexpression of recombinant reductase activities, the recombinant cells remain viable and vigorous under conditions that promote MG production. In other words, any potentially toxic excess of MG produced in the recombinant host cell is rapidly converted to 1,2-PD by the recombinant reductase activity (or activities). The 1,2-PD formed is then exported from the cell.

The maximum theoretical yield of 1,2-PD from sugars is favorable: up to 1.5 moles 1,2-PD per mole sugar. And, unlike n-butanol, 1,2-PD itself has very low toxicity to microorganisms. This allows for good cellular growth and viability at high final product titers. Cellular growth at 100 g/L 1,2-PD has been obtained.

BRIEF DESCRIPTION OF THE DRAWINGS

FIG. 1 is a schematic diagram showing the metabolic production of 1,2-PD according to the present invention.

FIG. 2 is a schematic diagram of a preferred repressible transformation vector for use in the present invention, pSE380.

FIG. 3 is an HPLC elution profile of media from recombinant *E. coli* strain AG1 cells which express exogenous aldose reductase activity showing production of 1,2-PD.

FIG. 4 is an HPLC elution profile of a 1,2-PD standard.

FIG. 5 is an HPLC elution profile of media from wild-type *E. coli* showing no production of 1,2-PD.

FIG. 6 is a graph depicting inducible production of 1,2-PD from recombinant *E. coli* containing an operon for the production and regulation of aldose reductase according to the present invention. Aldose reductase production was induced by the addition of IPTG to the culture medium.

FIG. 7 is a graph depicting the inhibition of cell growth due to the presence of 1,2-PD and 1,3-PD. As shown in the graph, 1,2-PD does not result in complete inhibition of cell growth until the amount added to the culture media is approximately 120 g/L.

DETAILED DESCRIPTION OF THE INVENTION

Overview

An abbreviated schematic diagram of standard sugar metabolism, as well as the pathway for 1,2-PD production according to the present invention, are shown in FIG. 1. In non-transformed *E. coli*, sugars are converted to dihydroxyacetone phosphate (DHAP) and glyceraldehyde-3-phosphate (G-3-P) by glycolytic enzymes common to most

organisms. The G-3-P is converted to metabolic byproducts such as ethanol, acetate, and succinate, and is also used for further metabolism.

DHAP is the initial intermediate in the 1,2-PD pathway. DHAP is converted to MG by methylglyoxal synthase. In non-transformed cells, the MG is metabolized to D-lactate as indicated in FIG. 1.

E. coli does not make 1,2-PD from sugars that are readily available. By manipulating various metabolic pathways leading both to and from MG, a microorganism can be made to produce 1,2-PD. While not being limited to any particular mode of action, it is thought that this reductive conversion takes place in two steps: 1) reduction of MG to acetol or lactaldehyde; and 2) reduction of acetol or lactaldehyde to 1,2-PD. Both reductions can be accomplished by a single enzyme activity or a combination of enzyme activities.

The crux of the invention, therefore, is a method to produce 1,2-PD using microorganisms which express enzyme activities whereby the microorganisms convert MG into 1,2-PD. The 1,2-PD so formed may then be harvested from the cell media. The microorganisms can be genetically altered organisms, including mutants or other recombinant strains.

The first step of the process is to identify and/or obtain the DNA sequences which encode the desired enzymes and insert or over-express them in the microorganism. This can be accomplished by any means known to the art.

For recombinant microorganisms, the preferred enzymes for the production of 1,2-PD are aldose reductase, glycerol dehydrogenase, or both. The preferred form of the aldose reductase gene is rat lens aldose reductase. The preferred form of the glycerol dehydrogenase gene is *E. coli* glycerol dehydrogenase. (In wild-type *E. coli*, glycerol dehydrogenase is regulated to prevent its catalyzing the conversion of MG to 1,2-PD.)

It must be noted, however, that because the aldose reductase sequence is highly conserved, the source of the aldose reductase gene is not critical to the present invention. (See, for instance, Sato et al. (1995) and Old et al. (1990)). Likewise, the source of the glycerol dehydrogenase gene is not critical to the success of the present invention, so long as the gene product displays the required reductive activity. The invention can be successfully practiced with any gene sequence whose expressed gene product provides reductive activity for the conversion of MG to 1,2-PD.

The rat lens aldose reductase gene has been cloned and sequenced and is available from the U.S. National Institutes of Health or can be obtained as described in Sato et al. and Old et al., supra. Other aldose reductase gene sequences are available from "GENBANK" and can be synthesized or sub-cloned using any of several well known methods. Likewise, genes for glycerol dehydrogenase activity are known ("GENBANK").

The gene which encodes the enzyme having the required activity is then incorporated into a suitable vector which is used to transform a suitable cellular host. The preferred vector is a plasmid vector. The preferred host is a bacterial host, most preferably *E. coli*, although yeast such as *S. cerevisiae* can be utilized with equal success.

Incorporation of the gene into a plasmid transformation or shuttle vector is accomplished by digesting the plasmid with suitable restriction endonucleases, followed by annealing the gene insert to the plasmid "sticky ends," and then ligating the construct with suitable ligation enzymes to re-circulize the plasmid. Each of these steps is well known to those skilled in the art and need not be described in detail here. (See, for instance, Sambrook, Fritsch, and Maniatis

(1986), *Molecular Cloning, A Laboratory Manual*, 2nd Ed., incorporated herein by reference for its teaching of vector construction and transformation.)

Once successfully transformed with the required gene(s), the recombinant microorganisms produce 1,2-PD from the fermentation of all common sugars, including arabinose, fructose, galactose, glucose, lactose, maltose, sucrose, and xylose. Additionally, it has been shown that fermentation conditions which increase the formation of MG result in increased titers of 1,2-PD.

For purposes of this invention, increased MG production in the host cell can be obtained using any method now known or developed in the future. In *E. coli*, methods to obtain increased MG production include, but are not limited to: culturing under low-phosphate (Ferguson et al. (1996)), culturing with cyclic AMP and pentoses such as xylose or arabinose (Ackerman et al. (1974)), increasing intracellular DHAP (e.g. by culturing a triose phosphate isomerase knockout mutant), increasing conversion of DHAP to MG (e.g. by over-expressing methylglyoxal synthase), and culturing under unregulated metabolism. (See, for instance, Freedberg et al. (1971) and Kadner et al. (1992).)

Similarly, by utilizing MG over-producing mutants as the host, or by over-expressing endogenous genes (or by introducing exogenous genes) which promote the production of MG, production of 1,2-PD from the transformed cells is maximized.

Careful selection of mutant hosts can also be used to increase the yield of 1,2-PD. *E. coli* mutants, such as AA200 (a triose phosphate isomerase knockout mutant, *E. coli* Genetic Stock Center, New Haven, Conn., U.S.A.), can be used as host cells to increase the intracellular levels of MG, thereby increasing 1,2-PD production. Similarly, glyoxalase knockout mutants can also be used as host cells, thereby increasing the intracellular level of MG for conversion to 1,2-PD. Appropriate host selection (using other *E. coli* mutants) also allows the conditions under which 1,2-PD is produced to be varied, e.g., aerobic or anaerobic production, different sugars as a carbon source, etc. For example, when transformed to express exogenous aldose reductase, the *E. coli* strain AA200 noted above has been shown to convert many sugars, including galactose, lactose, and sucrose, into 1,2-PD under aerobic conditions. Analogous transformations can also be accomplished in other host organisms, such as yeast.

Isolation of the 1,2-PD formed from the cell medium can be accomplished by any means known in the separation art. The preferred method is to filter the culture medium to separate cells and cellular debris, and then to isolate the 1,2-PD from the medium by vacuum distillation. (See, for instance, Simon et al. (1987).) If so desired, the recombinant microorganisms may be completely lysed by any known means prior to isolation of the 1,2-PD.

E. coli Transformed with pKKARX

For purposes of brevity and clarity only, the following description is limited to a transformation construct containing an aldose reductase gene. The identical procedure can be followed to insert any gene sequence having the proper activity, Such as glycerol dehydrogenase, into a host to thereby enable or maximize the production of 1,2-PD. Other enzymes which promote production of 1,2-PD include: carbonyl reductase (*E. coli* 1.1.1.84), glycerol dehydrogenase (*E. coli* 1.1.1.6, *E. coli* 1.1.1.156), aldehyde reductase (*E. coli* 1.1.1.2), methylglyoxal reductase (also known as 2-oxoaldehyde reductase and lactaldehyde dehydrogenase, *E. coli* 1.1.1.78), L-glycol dehydrogenase (*E. coli* 1.1.1.185), alcohol dehydrogenase *E. coli* 1.1.1.1, *E. coli*

1.1.1.2), 1,2-PD dehydrogenase, (lactaldehyde reductase, *E. coli* 1.1.1.55), and 1,2-PD oxidoreductase, (lactaldehyde reductase, *E. coli* 1.1.1.77).

Any *E. coli* strain can be transformed to contain the aldose reductase insert described herein. The preferred strain is *E. coli* AG1 (F⁻, endA1, hsdR17, {kn⁻, mk⁺} supE44, thi⁻1, recA1, gyrA96 relA1, λ⁻), available commercially from Stratagene Corporation (La Jolla, Calif.). This strain was used as the host strain for 1,2-PD production in the Examples described below unless otherwise noted. The AA200 and K10 strains were obtained from the *E. coli* Genetic Stock Center (New Haven, Conn.).

Similarly, any yeast strain can be transformed to contain the desired gene insert. *S. cerevisiae*, numerous strains of which are available from a host of commercial suppliers and the American Type Culture Collection, is preferred.

For transformation of bacteria, a plasmid vector containing the gene insert is preferred. Several suitable vectors are available commercially or can be obtained by methods well known to the art. A preferred expression vector is pKK233-2, available commercially from the Pharmacia Biotech (Piscataway, N.J.). The sequence of the pKK233-2 vector is shown in SEQ. ID. NO: 1. Suitable restriction enzymes and T4 DNA ligase to manipulate the vector can be obtained from several international suppliers, including Promega Corporation, (Madison, Wis.) and New England Biolabs (Beverly, Mass.).

The nucleotide sequence of the preferred rat lens aldose reductase gene is shown in SEQ. ID. NO: 3. The amino acid sequence of the encoded aldose reductase enzyme is shown in SEQ. ID. NO: 4.

The aldose reductase gene is inserted into the pKK233-2 plasmid (SEQ. ID. NO: 1) following standard procedures. (This process is essentially identical to that described by Old et al. (1990).) The resulting construct is designated pKKARX. The starting pKK233-2 plasmid is designed for direct cloning of eukaryotic genes in *E. coli*. The plasmid contains the highly expressed trc promoter (17 base pair spacing between the trp-35 region and the lac UV5-10 region), the lacZ ribosome binding site, and an ATG initiation codon. To prevent unstable replication, the strong rnB transcription terminator has been introduced downstream of the Multiple Cloning Site. Digestion with NcoI exposes the start codon for direct ligation and expression of foreign proteins. Eukaryotic gene fragments lacking a prokaryotic ribosome binding site and/or an ATG can be inserted in the correct reading frame by using one of several commercially available NcoI linkers. (Available, for instance, from Pharmacia Biotech, Piscataway, N.J.). The NcoI recognition sequence, CCATGG, commonly occurs at the initiation codon of eukaryotic genes, allowing direct ligation to the vector.

E. coli can then be transformed using the pKKARX construct. All transformations described herein were performed by the calcium chloride method using standard and well-known methodologies. While the calcium chloride method is preferred, transformation can be accomplished with equal success using any of several conventional procedures, such as electroporation and the like.

Once transformed with pKKARX, wild-type *E. coli* host cells produce 1,2-PD from arabinose, glucose, and xylose. Analysis for production of 1,2-PD is performed as described in Example 1, below.

E. coli Transformed with pSEARX

Another aspect of the invention is to transform the host with an insert which includes inducible or repressible genetic elements. This allows the production of 1,2-PD to be switched on or off by addition of a suitable inducer or repressor.

The preferred construct, designated pSEARX, is constructed by digesting pKKARX (described above) and a commercially-available vector designated pSE380 (Invitrogen, La Jolla, Calif.) with NcoI and EcoRI. The resulting fragments from NcoI and EcoRI digestion are then separated by agarose gel electrophoresis, and the aldose reductase gene and pSE380 vector purified using "GENECLEAN" (Bio 101 Inc., La Jolla, Calif.) according to the manufacturer's instructions. The two fragments are then ligated and transformed into AG1 using standard procedures (Sambrook et al., supra).

A schematic of the starting pSE380 plasmid is shown in FIG. 2. The pSE380 plasmid includes a strong trc promoter for high level transcription, as well as the lacO operator and lacI^q repressor gene (which allows transcriptional regulation in any *E. coli* strain). While the pSE380 starting plasmid is preferred, any construct containing an inducible or repressible promoter which can control the expression of gene sequences operationally linked to the promoter will function with equal success. In addition to the trc promoter, examples of well known promoters which can be utilized include lac, tac, and phoA. The nucleotide sequence of pSE380 is given in SEQ. ID. NO: 2.

Inducing a wild-type *E. coli* host transformed with pSEARX by adding IPTG to the media results in the production of 1,2-PD when the host is grown on arabinose, glucose, and xylose.

Mutant Host Selection to Maximize Utilizable Substrates and 1,2-PD Production

Increased flexibility when producing 1,2-PD from transformed *E. coli* or yeast is afforded by selection of a suitable mutant host. For instance, when transformed with either pKKARX or pSEARX as described above, triose phosphate isomerase knockout mutant bacteria, such as *E. coli* strain AA200, produce 1,2-PD when fermented with any combination of arabinose, galactose, glucose, lactose, sucrose, and xylose. Triose phosphate isomerase catalyzes the interconversion of DHAP to G-3-P. (See FIG. 1.) By utilizing a host mutant which lacks triose phosphate isomerase activity, the metabolic fate of DHAP is directed to the formation of MG, which is then converted by various reductive enzyme activities into 1,2-PD, thereby increasing 1,2-PD titers.

Likewise, 1,2-PD production can be maximized by utilizing other mutants lacking one or more enzymes which decrease intracellular pools of MG. For instance, the normal metabolic pathway to detoxify intracellular methylglyoxal utilizes glyoxalase I. Glyoxalase I catalyzes the conversion of MG to S-D-lactoylglutathione, which is subsequently converted to lactate by glyoxalase II. Consequently, when a host is transformed to express a recombinant enzyme having MG reducing activity, the MG-reducing enzyme competes with glyoxalase I for the available MG. By utilizing glyoxalase I knockout mutants, the intracellular pool of MG for conversion to 1,2-PD is increased, and the ultimate production of 1,2-PD is likewise increased.

Glyoxalase mutants can be constructed in *E. coli*, yeast, or any other suitable host, using standard techniques. Because several glyoxalase oligonucleotide sequences are known ("GENBANK"), the most straightforward route to obtain a glyoxalase mutant is to recombine a deletion into the chromosomal copy of the glyoxalase gene whereby glyoxalase activity is destroyed. An example of how this can be done is described in Koob et al. (1994).

Negative Controls

To provide a negative control for the pKKARX and pSEARX constructs, a plasmid designated pKKARX/PstI was constructed by digesting pKKARX with PstI and puri-

fyng the vector portion of the resulting digest. The vector was then self-ligated resulting in an approximately 1 kb deletion within the aldose reductase gene on the plasmid. AG1 cells transformed with pKKARX/Pst show no aldose reductase activity or 1,2-PD production.

Yeast Hosts

In an analogous fashion, yeast (as well as other cellular hosts) can be transformed to contain the aldose reductase gene (or any of the other genes listed above) and can be used to produce 1,2-PD by fermentation of common sugars.

In yeast, the aldose reductase gene is first inserted into an appropriate shuttle vector. In the preferred embodiment, an aldose reductase cassette is ligated into YpJ66 digested with EcoRI/KpnI, thus replacing the galK cassette with an aldose reductase cassette between EcoRI and KpnI. YpJ66 is constructed from YEp352, whose oligonucleotide sequence is shown in SEQ. ID. NO: 5, and can be constructed according to the method of Hill et al. (1986). In short, this is accomplished by inserting the CUP1 promoter, (galK) and CYC1 terminator sequence into the XbaI site of Yep352.

Preferably, the vector is then transformed into YPH500 (ATCC 76626) (leu⁻, trp⁻, ura⁻, lys⁻, ade⁻, his⁻) by standard methods and fed the required amino acids for growth, except uracil, which is used as the marker to maintain the plasmid in yeast. In the same fashion as transformed *E. coli*, yeast transformed to contain the aldose reductase insert produce 1,2-PD in isolatable quantities when fermented on a wide variety of common sugars, including galactose, glucose, sucrose, fructose, and maltose.

Other genetically altered strains can produce 1,2-PD when cultured on other sugar carbon sources such as xylose and lactose.

Synthetic Operons for the Production of 1,2-PD

Ideally, three criteria should be maximized in order to maximize production of 1,2-PD. These three criteria are: increased production of MG, increased production of enzymes to convert MG to 1,2-PD, and increased production of enzymes such as pyridine nucleotide transferase to increase the reducing power within the cell (and thereby favor the reduction of MG to 1,2-PD). In this embodiment of the invention, a methylglyoxal synthase gene for increasing production of MG, and/or an aldose reductase or glycerol dehydrogenase gene for converting MG to 1,2-PD, and/or a pyridine nucleotide transferase gene for increasing the reductive power of the host cell are operationally linked, in any order, under the control of one or more promoters, to yield a synthetic operon which maximizes the production of 1,2-PD in host microorganisms transformed with the operon.

The methylglyoxal synthase gene has been cloned and expressed in *E. coli* and is shown in SEQ. ID. NO: 6. The ATG initiation codon is underlined. (See also Percy and Harrison (1996)). Likewise, the pyridine nucleotide transferase gene, encoding subunits A and B, is also known and is shown in SEQ. ID. NO: 7. The amino acid sequences of the encoded A and B subunits of pyridine nucleotide transferase are shown in SEQ. ID. NO: 8 and SEQ. ID. NO: 9, respectively. The glycerol dehydrogenase gene has also been identified; its oligonucleotide sequence is shown in SEQ. ID. NO: 10. The glycerol dehydrogenase amino acid sequence is shown in SEQ. ID. NO: 11.

To construct the synthetic operon according to the present invention, SEQ. ID. NO: 3 (aldose reductase), SEQ. ID. NO: 6 (methylglyoxal synthase), SEQ. ID. NO: 7 (pyridine nucleotide transferase) and/or SEQ. ID. NO: 10 (glycerol dehydrogenase) are operatively linked together in a 5' to 3' orientation. The order of the genes is not critical to the functionality of the operon, so long as each gene is operationally linked to its neighbor in a 5' to 3' orientation.

The gene sequences are inserted into a suitable plasmid host which includes one or more promoter sequences such that the promoter is operationally linked to the gene sequences and can function to promote or repress transcription of the genes. Suitable promoter sequences include any number of well known and widely used promoters such as lac, trc, tac, and phoA. For instance, pSE380 contains the trc promoter. A very large number of suitable transformation vectors containing the above-listed promoters are commercially available from several international suppliers.

The gene insert containing the functional genes is constructed by standard and well known means. In short, the individual gene inserts are digested with an appropriate restriction enzyme to yield complimentary "sticky ends," which are then annealed to one another and ligated with T4 ligase. The gene construct is then again digested to yield appropriate complimentary ends to be operationally inserted into a plasmid vector containing the promoter sequences. Many commercial plasmids contain a Multiple Cloning Site which allows any number of different restriction enzymes to be utilized to effect insertion of the construct into the plasmid vector. The vector is then used to transform a suitable host, as described above.

When transformed with the synthetic operon as described herein, the recombinant microorganism produces 1,2-PD in isolatable quantities.

The synthetic operon need not contain any or all of the above-noted genes. At a minimum, at least one gene encoding an enzyme to effect the reduction of MG to 1,2-PD must be present, such as the aldose reductase gene or the glycerol dehydrogenase gene or some other gene or genes. In addition, either or both of the methylglyoxal synthase and pyridine nucleotide transferase genes may be present. Additionally, the genes need not all be under the control of a single promoter. For purposes of flexibility, each individual gene can be placed under the control of a separate promoter.

Additionally, an alternative to utilizing a triose phosphate isomerase knockout mutant host strain is to place the triose phosphate isomerase gene under the control of a promoter sequence. This enables transcription of the gene to be switched on or off, depending upon the conditions present. To effect insertion of promoter sequence in operational orientation to the triose phosphate isomerase gene, standard recombinant genetic techniques are utilized. (Again, see Sambrook, Fritsch, and Maniatis (1986), *Molecular Cloning, A Laboratory Manual, 2nd Ed.*) The promoter of interest is placed into a suitable vector, preferably a plasmid vector, which contains appropriate cloning sequences to enable operational insertion of the promoter sequence into the genome of the host organism. Successful incorporation of the plasmid is determined via antibiotic resistance and/or testing for induction (or repression) of triose phosphate isomerase. Such method are well known to those skilled in the art.

EXAMPLES

The following Examples are included solely for illustrative purposes to provide a more complete understanding of the invention. The Examples do not limit the scope of the invention disclosed or claimed herein in any fashion.

Example 1

Chromatographic Analysis of Culture Broth

FIGS. 3 and 5 depict HPLC analyses of the culture broth of an *E. coli* strain AG1 transformed to express aldose reductase (using pKKARX) and a non-transformed culture

11

of the same strain, respectively. FIG. 4 depicts an HPLC elution profile of a 1,2-PD standard solution. With reference to FIGS. 3 and 5, the fermentations were performed under standard anaerobic conditions using 5 g/L glucose as carbon source. Media samples were centrifuged and filtered before analysis.

To generate the plots shown in FIGS. 3 and 5, an organic acids column (Bio-Rad "HPX87H", Hercules, Calif.) was used to quantify 1,2-PD, ethanol, sugars, and organic acids under the following conditions: 50 μ L sample size, pH 2 (H_2SO_4); 0.5 mL/min flow rate, and 40° C. column temperature. Peaks were detected by a refractive index detector at 40° C.

The 1,2-PD peak from the organic acids column was further analyzed by injection onto a cation-exchange column (Waters "SUGAR-PAK II," Marlboro, Mass.). The 1,2-PD peak isolated from the fermentation broth elutes at exactly the same time as the 1,2-PD control. The secondary peak identifications were performed on the "SUGAR-PAK II" column under the following conditions: 50 μ L sample size, Milli-Q water mobile phase; 0.5 mL/min flow rate; and 90° C. column temperature.

Additionally, analyses were performed in which the 1,2-PD peak from the organic acids column was collected and subjected to gas chromatographic (GC) analysis and mass spectrographic analysis. The GC peak co-eluted with the 1,2-PD standard. Mass spectrometry showed the same fragmentation pattern as the 1,2-PD standard. The fact that the same peak co-eluted with a 1,2-PD standard on 3 different columns (HPLC organic acids column, HPLC sugars column, and GC), with different methods of separation, as well as its fragmentation in mass spectrography, its identification as 1,2-PD is quite certain.

Example 2

Production of 1,2-Propanediol from Various Common Sugars

In this Example, a triose phosphate isomerase mutant (tpi-), AA200, was transformed with pSEARX containing the gene for aldose reductase as described above. (This transformed cell line is designated AA200::pSEARX). The non-transformed AA200 mutant yields higher intracellular concentrations of methylglyoxal, the precursor to 1,2-PD, than the wild-type. (See Hopper and Cooper (1972).) When transformed with pSEARX, the AA200::pSEARX cell line produced 1,2-PD from arabinose, galactose, glucose, lactose, sucrose, and xylose. The yield of 1,2-PD from AA200::pSEARX fermented with various sugars was as follows:

TABLE 1

SUGAR	TITER 1,2-PD, mg/L
Galactose	66
Glucose	71
Lactose	6
Sucrose	7
Xylose	49

Fermentation was performed using standard anaerobic fermentation procedures using 10 g/L of the appropriate sugar. The fermentation was allowed to proceed for 24 hours prior to analysis for 1,2-PD.

12

Example 3

Inducible Production of 1,2-PD

In this Example, the results of which are depicted in FIG. 6, *E. coli* strain AG1 was transformed as described herein with the pSEARX plasmid containing the aldose reductase gene. The transformed cells were then cultured under standard anaerobic conditions on 5 g/L glucose with increasing levels of the promoter IPTG. The X-axis of FIG. 6 gives the concentration of IPTG in millimolarity. The right-hand Y-axis (■) reports the production of 1,2-PD in mg/L as a function of IPTG concentration. Likewise the left-hand Y-axis (●) reports the activity of aldose reductase in U/mg. As is clearly shown in FIG. 6, inducing the promoter leads to the production of 1,2-PD.

Example 4

Inhibition of Cell Growth by 1,2-PD

Here, an Experiment was performed to determine at what level the presence 1,2-PD and 1,3-PD begin to have an adverse effect on *E. coli* cell growth. Anaerobic batch cultivations of *E. coli* were carried out in 10 mL culture tubes. Nine different batch cultivations, covering a range between 0 and 120 g/L of 1,2-PD (○) and and 1,3-propanediol (□) were carried out in triplicate. Using optical density measurements, the growth in each tube was monitored and the specific growth rate determined. The results are depicted in FIG. 7. The ratio μ/μ_0 has been plotted as a function of the concentration of 1,2-PD and 1,3-PD (I, g/L). The value of μ equals the specific growth rate determined for the corresponding concentration of 1,2 or 1,3-PD; the value of μ_0 equals the specific growth rate determined in the absence of any 1,2-PD or 1,3-PD. The error bars indicate the standard deviation between the triplicate experiments. As can be seen from FIG. 7, 1,2-PD does not cause complete inhibition of cell growth until a concentration of approximately 120 g/L is reached.

Example 5

Anaerobic Production of 1,2-PD Utilizing Recombinant Glycerol Dehydrogenase Gene

E. coli strain AG1 was transformed in standard fashion with pSE380 containing a gene for *E. coli* glycerol dehydrogenase. The plasmid, designated pNEA10, was constructed in standard fashion. The transformed cells were then cultured under strictly anaerobic conditions on 10 g/L glucose. The fermentation was allowed to proceed for 12 hours to allow cell growth prior to addition of IPTG. The fermentation was then allowed to proceed for an additional 24 hours prior to analysis for 1,2-PD. The results are shown in Table 2:

TABLE 2

plasmid	IPTG mM	1,2-PD Titer mg/L	Activity* U/mg
pSE380†	0.0	0	0.10
pNEA10	0.0	100	0.48
pNEA10	0.05	190	3.00
pNEA10	0.10	220	2.70
pNEA10	0.25	220	3.10

*measured using glycerol as a substrate

†control plasmid without glycerol dehydrogenase gene

Production of 1,2-PD by Host Containing Recombinant Glycerol Dehydrogenase Gene in Combination with Promoter

E. coli strain AG1 was transformed as described in Example 5. The transformed cells were then cultured on 15 g/L glucose under anaerobic conditions. Prior to the fermentation, the media was not purged of oxygen. IPTG was added at the start of the fermentation. The fermentation was allowed to proceed for 36 hours prior to analysis for 1,2-PD. The results are depicted in Table 3:

TABLE 3

plasmid	IPTG mM	1,2-PD Titer mg/L	Activity* U/mg
pSE380†	0.0	0	0.10
pNEA10	0.0	30	2.31
pNEA10	0.05	100	9.89

*measured using acetol as a substrate

†control plasmid without glycerol dehydrogenase gene

SEQUENCE LISTING

(1) GENERAL INFORMATION:

(iii) NUMBER OF SEQUENCES: 11

(2) INFORMATION FOR SEQ ID NO:1:

(i) SEQUENCE CHARACTERISTICS:

- (A) LENGTH: 4593 base pairs
 (B) TYPE: nucleic acid
 (C) STRANDEDNESS: single
 (D) TOPOLOGY: circular

(ii) MOLECULE TYPE: DNA (genomic)

(iii) HYPOTHETICAL: NO

(iv) ANTI-SENSE: NO

(vi) ORIGINAL SOURCE:

- (A) ORGANISM: Vector pKK232-2

(xi) SEQUENCE DESCRIPTION: SEQ ID NO:1:

```

CCGGATCCTC TACGCCGGAC GCATCGTGGC CGGCATCACC GCGCCACAG GTGCCGTTGC      60
TGGCGCCTAT ATCGCCGACA TCACCGATGG GGAAGATCGG GCTCGCCACT TCGGGCTCAT      120
GAGCGCTTGT TTCGCGGTGG GTATGGTGGC AGGCCCCGTG GCCGGGGGAC TGTTGGGGCGC      180
CATCTCCTTG CATGCACCAT TCCTTGCGGC GCGGGTGCTC AACGGCCTCA ACCTACTACT      240
GGGCTGCTTC CTAATGCAGG AGTCGCATAA GGGAGAGCGT CGACCGATGC CCTTGAGAGC      300
CTTCAACCCA GTCAGCTCCT TCCGGTGGGC GCGGGGCATG ACTATCGTCG CCGCACTTAT      360
GACTGTCTTC TTTATCATGC AACTCGTAGG ACAGGTGCCG GCAGCGCTCT GGGTCATTTT      420
CGGCGAGGAC CGCTTTCGCT GGAGCGCGAC GATGATCGGC CTGTGCTTG CGGTATTTCGG      480
AATCTTGAC GCCCTCGCTC AAGCCTTCGT CACTGGTCCC GCCACCAAAC GTTTCGGCGA      540
GAAGCAGGCC ATTATCGCCG GCATGGCGGC CGACGCGCTG GGCTACGTCT TGCTGGCGTT      600
CGCGACGCGA GGCTGGATGG CCTTCCCAT TATGATTCTT CTCGTTCCG GCGGCATCGG      660
GATGCCCAGG TTGCAGGCCA TGCTGTCCAG GCAGGTAGAT GACGACCATC AGGGACAGCT      720
TCAAGGATCG CTCGCGGCTC TTACCAGCCT AACTTCGATC ACTGGACCCG TGATCGTCAC      780
GGCGATTTAT GCCGCTCGG CGAGCACATG GAACGGGTTG GCATGGATTG TAGGCGCCGC      840
CCTATACCTT GTCTGCTCC CCGGTTGCG TCGCGGTGCA TGGAGCCGGG CCACCTCGAC      900
CTGAATGGAA GCCGCGGCA CCTCGCTAAC GGATTCACCA CTCCAAGAAT TGGAGCCAAT      960
CAATTCCTGC GGAGAACTGT GAATGCGCAA ACCAACCTT GGCAGAACAT ATCCATCGCG      1020
TCCGCCATCT CCAGCAGCCG CACGCGGCGC ATCTCGGGCA GCGTTGGGTC CTGGCCACGG      1080

```

-continued

GTGCGCATGA	TCGTGCTCCT	GTCGTTGAGG	ACCCGGCTAG	GCTGGCGGGG	TTGCCTTACT	1140
GTTTAGCAGA	ATGAATCACC	GATACGCGAG	CGAACGTGAA	GCGACTGCTG	CTGCAAAACG	1200
TCTGCGACCT	GAGCAACAAC	ATGAATGGTC	TTCGGTTTCC	GTGTTTCGTA	AAGTCTGGAA	1260
ACGCGGAAGT	CAGCGCCCTG	CACCATTATG	TTCCGGATCT	GCATCGCAGG	ATGCTGCTGG	1320
CTACCTGTG	GAACACCTAC	ATCTGTATTA	ACGAAGCGCT	GGCATTGACC	CTGAGTGATT	1380
TTTCTCTGGT	CCCGCCGCAT	CCATACCGCC	AGTTGTTTAC	CCTCACAAAC	TTCCAGTAAC	1440
CGGGCATGTT	CATCATCAGT	AACCCGTATC	GTGAGCATCC	TCTCTCGTTT	CATCGGTATC	1500
ATTACCCCCA	TGAACAGAAA	TTCCCCCTTA	CACGGAGGCA	TCAAGTGACC	AAACAGGAAA	1560
AAACCGCCCT	TAACATGGCC	CGCTTATCA	GAAGCCAGAC	ATTAACGCTT	CTGGAGAAAC	1620
TCAACGAGCT	GGACGCGGAT	GAACAGGCAG	ACATCTGTGA	ATCGCTTAC	GACCACGCTG	1680
ATGAGCTTTA	CCGACAGTGC	CTCGCGCGTT	TCGGTGATGA	CGGTGAAAAC	CTCTGACACA	1740
TGCAGCTCCC	GGAGACGGTC	ACAGCTTGTC	TGTAAGCGGA	TGCCGGGAGC	AGACAAGCCC	1800
GTCAGGGCGC	GTCAGCGGGT	GTTGGCGGGT	GTCGGGGCGC	AGCCATGACC	CAGTCACGTA	1860
GCGATAGCGG	AGTGATACT	GGCTTAACTA	TGCGGCATCA	GAGCAGATTG	TACTGAGAGT	1920
GCACCATATG	CGGTGTGAAA	TACCGCACAG	ATGCGTAAGG	AGAAAATACC	GCATCAGGCG	1980
CTCTTCCGCT	TCCTCGCTCA	CTGACTCGCT	GCGCTCGGTC	GTTCCGGTGC	GGCGAGCGGT	2040
ATCAGCTCAC	TCAAAGGCGG	TAATACGGTT	ATCCACAGAA	TCAGGGGATA	ACGACAGAAA	2100
GAACATGTGA	GCAAAGGCC	AGCAAAGGC	CAGGAACCGT	AAAAAGGCCG	CGTTGTGGC	2160
GTTTTTCCAT	AGGCTCCGCC	CCCCTGACGA	GCATCACAAA	AATCGACGCT	CAAGTCAGAG	2220
GTGGCGAAAC	CCGACAGGAC	TATAAAGATA	CCAGGCGTTT	CCCCTGGAA	GCTCCCTCGT	2280
GCGCTCTCCT	GTTCCGACCC	TGCCGCTTAC	CGGATACCTG	TCCGCCTTTC	TCCCTTCGGG	2340
AAGCGTGGCG	CTTTCTCATA	GCTCACGCTG	TAGGTATCTC	AGTTCGGTGT	AGGTCGTTCG	2400
CTCCAAGCTG	GGCTGTGTGC	ACGAACCCCC	CGTTCAGCCC	GACCGCTGCG	CCTTATCCGG	2460
TAACATATCGT	CTTGAGTCCA	ACCCGTAAG	ACACGACTTA	TCGCCACTGG	CAGCAGCCAC	2520
TGGTAACAGG	ATTAGCAGAG	CGAGGTATGT	AGGCGGTGCT	ACAGAGTCT	TGAAGTGGTG	2580
GCCTAACTAC	GGCTACACTA	GAAGGACAGT	ATTTGGTATC	TGCGCTCTGC	TGAAGCCAGT	2640
TACCTTCGGA	AAAAGAGTTG	GTAGCTCTTG	ATCCGGCAAA	CAAACCACCG	CTGGTAGCGG	2700
TGGTTTTTTT	GTTTGCAAGC	AGCAGATTAC	GCGCAGAAAA	AAAGGATCTC	AAGAAGATCC	2760
TTTGATCTTT	TCTACGGGGT	CTGACGCTCA	GTGGAACGAA	AACTCACGTT	AAGGGATTTT	2820
GGTCATGAGA	TTATCAAAAA	GGATCTTCAC	CTAGATCCTT	TTAAATTAAA	AATGAAGTTT	2880
TAAATCAATC	TAAAGTATAT	ATGAGTAAAC	TTGGTCTGAC	AGTTACCAAT	GCTTAATCAG	2940
TGAGGCACCT	ATCTCAGCGA	TCGTCTATTT	TCGTTTATCC	ATAGTTGCCT	GACTCCCCGT	3000
CGTGTAGATA	ACTACGATAC	GGGAGGGCTT	ACCATCTGGC	CCCAGTGCTG	CAATGATACC	3060
GCGAGACCCA	CGCTCACCGG	CTCCAGATTT	ATCAGCAATA	AACCAGCCAG	CCGGAAGGGC	3120
CGAGCGCAGA	AGTGGTCTCT	CAACTTTATC	CGCCTCCATC	CAGTCTATTA	ATTGTTGCCG	3180
GGAAGCTAGA	GTAAGTAGTT	CGCCAGTTAA	TAGTTTGCGC	AACGTTGTTG	CCATTGCTAC	3240
AGGCATCGTG	GTGTCACGCT	CGTCGTTTGG	TATGGCTTCA	TTCAGCTCCG	GTTCCCAACG	3300
ATCAAGGCGA	GTTACATGAT	CCCCATGTT	GTGCAAAAAA	GCGGTTAGCT	CCTTCGGTCC	3360
TCCGATCGTT	GTCAGAAGTA	AGTTGGCCGC	AGTGTATCA	CTCATGGTTA	TGGCAGCACT	3420

-continued

GCATAATTCT	CTTACTGTCA	TGCCATCCGT	AAGATGCTTT	TCTGTGACTG	GTGAGTACTC	3480
AACCAAGTCA	TTCTGAGAA	AGTGTATGCG	GCGACCGAGT	TGCTCTTGCC	CGGCGTCAAC	3540
ACGGGATAAT	ACCGCGCCAC	ATAGCAGAAC	TTTAAAAGTG	CTCATCATTG	GAAAACGTTC	3600
TTCGGGGCGA	AAACTCTCAA	GGATCTTACC	GCTGTTGAGA	TCCAGTTCGA	TGTAACCCAC	3660
TCGTGCACCC	AACTGATCTT	CAGCATCTTT	TACTTTCACC	AGCGTTTCTG	GGTGAGCAAA	3720
AACAGGAAGG	CAAAATGCCG	CAAAAAAGGG	AATAAGGGCG	ACACGGAAAT	GTTGAATACT	3780
CATACTCTCT	CTTTTTCAAT	ATTATTGAAG	CATTTATCAG	GGTTATTGTC	TCATGAGCGG	3840
ATACATATTT	GAATGTATTT	AGAAAAATAA	ACAAAAAGAG	TTTGTAGAAA	CGCAAAAAGG	3900
CCATCCGTCA	GGATGGCCTT	CTGCTTAATT	TGATGCCTGG	CAGTTTATGG	CGGGCGTCCCT	3960
GCCCCCACC	CTCCGGGCCG	TTGCTTCGCA	ACGTTCAAAT	CCGCTCCCGG	CGGATTTGTC	4020
CTACTCAGGA	GAGCGTTTAC	CGACAAACAA	CAGATAAAAC	GAAAGGCCCA	GTCTTTCGAC	4080
TGAGCCTTTC	GTTTTATTTG	ATGCCTGGCA	GTTCCCTACT	CTCGCATGGG	GAGACCCAC	4140
ACTACCATCG	GCGCTACGGC	GTTTCACTTC	TGAGTTCGGC	ATGGGGTCAG	GTGGGACCAC	4200
CGCGCTACTG	CCGCCAGGCA	AACTGTTTTA	TCAGACCGCT	TCTGCGTTCT	GATTTAATCT	4260
GTATCAGGCT	GAAAATCTTC	TCTCATCCGC	CAAAACAGCC	AAGCTTGGCT	GCAGCCATGG	4320
TCTGTTTCC	GTGTGAAATT	GTTATCCGCT	CACAATTCCA	CACATTATAC	GAGCCGGATG	4380
ATTAATTGTC	AACAGCTCAT	TTCAGAATAT	TTGCCAGAAC	CGTTTATATG	TCGGCGCAAA	4440
AAACATTATC	CAGAACGGGA	GTGCGCCTTG	AGCGACACGA	ATTATGCAGT	GATTTACGAC	4500
CTGCACAGCC	AATCCACAGC	TTCCGATGGC	TGCCTGACGC	CAGAAGCATT	GGTGCACCGT	4560
GCAGTCGATG	ATAAGCTGTC	AAACATGAGA	ATT			4593

(2) INFORMATION FOR SEQ ID NO:2:

(i) SEQUENCE CHARACTERISTICS:

- (A) LENGTH: 4476 base pairs
- (B) TYPE: nucleic acid
- (C) STRANDEDNESS: single
- (D) TOPOLOGY: circular

(ii) MOLECULE TYPE: DNA (genomic)

(iii) HYPOTHETICAL: NO

(iv) ANTI-SENSE: NO

(vi) ORIGINAL SOURCE:

- (A) ORGANISM: Vector pSE380

(xi) SEQUENCE DESCRIPTION: SEQ ID NO:2:

AATTCTCATG	TTTGACAGCT	TATCATCGAC	TGCACGGTGC	ACCAATGCTT	CTGGCGTCAG	60
GCAGCCATCG	GAAGCTGTGG	TATGGCTGTG	CAGGTCGTAA	ATCACTGCAT	AATTCGTGTC	120
GCTCAAGGCG	CACTCCCGTT	CTGGATAATG	TTTTTTGCGC	CGACATCATA	ACGGTTCTGG	180
CAAAATTTCT	GAAATGAGCT	GTTGACAATT	AATCATCCGG	CTCGTATAAT	GTGTGGAATT	240
GTGAGCGGAT	AACAATTTCA	CACAGGAAAC	AGACCATGGC	TGGTGACCAC	GTCGTGGAAT	300
GCCTTCGAAT	TCAGCACCTG	CACATGGGAC	GTCGACCTGA	GGTAATTATA	ACCCGGGCCC	360
TATATATGGA	TCCAATTGCA	ATGATCATCA	TGACAGATCT	GCGCGCGATC	GATATCAGCG	420
CTTTAAATTT	GCGCATGCTA	GCTATAGTTC	TAGAGGTACC	GGTTGTTAAC	GTTAGCCGGC	480
TACGTATACT	CCGGAATATT	AATAGGCCTA	GGATGCATAT	GCGGCCCGCC	TGCAGCTGGC	540
GCCATCGATA	CGCGTACGTC	GCGACCGCGG	ACATGTACAG	AGCTCGAGAA	GTACTAGTGG	600

-continued

CCACGTGGGC	CGTGCACCTT	AAGCTTGGCT	GTTTTGGCGG	ATGAGAGAAG	ATTTTCAGCC	660
TGATACAGAT	TAAATCAGAA	CGCAGAAGCG	GTCTGATAAA	ACAGAATTTG	CCTGGCGGCA	720
GTAGCGCGGT	GGTCCCACCT	GACCCCATGC	CGAACTCAGA	AGTGAAACGC	CGTAGCGCCG	780
ATGGTAGTGT	GGGTCTCCC	CATGCGAGAG	TAGGGAACTG	CCAGGCATCA	AATAAACGA	840
AAGGCTCAGT	CGAAAGACTG	GGCCTTTCGT	TTTATCTGTT	GTTTGTCCGT	GAACGCTCTC	900
CTGAGTAGGA	CAAATCCGCC	GGGAGCGGAT	TGAAACGTTG	CGAAGCAACG	GCCCGGAGGG	960
TGGCGGGCAG	GACGCCCGCC	ATAAACTGCC	AGGCATCAAA	TTAAGCAGAA	GGCCATCCTG	1020
ACGGATGGCC	TTTTTGCGTT	TCTACAAACT	CTTTTGTGTT	ATTTTCTAA	ATACATTCAA	1080
ATATGTATCC	GCTCATGAGA	CAATAACCCT	GATAAATGCT	TCAATAATAT	TGAAAAAGGA	1140
AGAGTATGAG	TATTC AACAT	TTCCGTGTGC	CCCTTATTC	CTTTTTGCG	GCATTTTGCC	1200
TTCCGTGTTT	TGCTCACCCA	GAAACGCTGG	TGAAAGTAAA	AGATGCTGAA	GATCAGTTGG	1260
GTGCACGAGT	GGTTACATC	GAACTGGATC	TCAACAGCGG	TAAGATCCTT	GAGAGTTTTC	1320
GCCCCGAAGA	ACGTTTTCCA	ATGATGAGCA	CTTTTAAAGT	TCTGCTATGT	GGCGCGGTAT	1380
TATCCCGTGT	TGACCCCGGG	CAAGAGCAAC	TCGGTCGCGG	CATACACTAT	TCTCAGAATG	1440
ACTTGGTTGA	GTACTCACCA	GTCACAGAAA	AGCATCTTAC	GGATGGCATG	ACAGTAAGAG	1500
AATTATGCAG	TGCTGCCATA	ACCATGAGTG	ATAACACTGC	GGCCAACHTA	CTTCTGACAA	1560
CGATCGGAGG	ACCGAAGGAG	CTAACCGCTT	TTTTGCACAA	CATGGGGGAT	CATGTAACCTC	1620
GCCTTGATCG	TTGGGAACCG	GAGCTGAATG	AAGCCATACC	AAACGACGAG	CGTGACACCA	1680
CGATGCCTGT	AGCAATGGCA	ACAACGTTGC	GCAAACHTAT	AACTGGCGAA	CTACTTACTC	1740
TAGCTTCCCG	GCAACAATTA	ATAGACTGGA	TGGAGGCGGA	TAAAGTTGCA	GGACCCTTC	1800
TGCGCTCGGC	CCTTCCGGCT	GGCTGTTTTA	TTGCTGATAA	ATCTGGAGCC	GGTGAGCGTG	1860
GGTCTCGCGG	TATCATTGCA	GCACTGGGGC	CAGATGGTAA	GCCCTCCCGT	ATCGTAGTTA	1920
TCTACACGAC	GGGGAGTCAG	GCAACTATGG	ATGAACGAAA	TAGACAGATC	GCTGAGATAG	1980
GTGCCTCACT	GATTAAGCAT	TGSTAACHTG	CAGACCAAGT	TTACTCATAT	ATACTTTAGA	2040
TTGATTTAAA	ACTTCATTTT	TAATTTAAAA	GGATCTAGGT	GAAGATCCTT	TTTGATAATC	2100
TCATGACCAA	AATCCCTTAA	CGTGAGTTTT	CGTTCCTACTG	AGCGTCAGAC	CCCCTAGAAA	2160
AGATCAAAGG	ATCTTCTTGA	GATCCTTTTT	TTCTGCGCGT	AATCTGCTGC	TTGCAAACAA	2220
AAAAACCACC	GCTACCAGCG	GTGGTTTGTT	TGCCGGATCA	AGAGCTACCA	ACTCTTTTTTC	2280
CGAAGGTAAC	TGGTTCAGC	AGAGCGCAGA	TACCAAATAC	TGTCCTTCTA	GTGTAGCCGT	2340
AGTTAGGCCA	CCACTTCAAG	AACTCTGTAG	CACCGCTTAC	ATACCTCGCT	CTGCTAATCC	2400
TGTTACCAGT	GGCTGCTGCC	AGTGGCGATA	AGTCGTGTCT	TACCGGGTTG	GACTCAAGAC	2460
GATAGTTACC	GGATAAGCGG	CAGCGTCCGG	GCTGAACGGG	GGGTTCGTGC	ACACAGCCCA	2520
GCTTGAGGCG	AACGACCTAC	ACCGAACTGA	GATACCTACA	GCGTGAGCTA	TGAGAAAGCG	2580
CCACGCTTCC	CGAAGGGAGA	AAGCGGACA	GGTATCCGGT	AAGCGGCAGG	GTCGGAACAG	2640
GAGAGCGCAC	GAGGGAGCTT	CCAGGGGAA	ACGCCTGGTA	TCTTTATAGT	CCTGTCCGGT	2700
TTCCGCCACCT	CTGACTTGAG	CGTCGATTTT	TGTGATGCTC	GTCAGGGGGG	CGGAGCCTAT	2760
GGAAAAACGC	CAGCAACGCG	GCCTTTTTAC	GGTTCCTGGC	CTTTTGCTGG	CCTTTTGCTC	2820
ACATGTTCTT	TCCTGCGTTA	TCCCCGATT	CTGTGGATAA	CCGTATTACC	GCCTTTGAGT	2880
GAGCTGATAC	CGCTCGCCCG	AGCCGAACGA	CCGAGCGCAG	CGAGTCAGTG	AGCGAGGAAG	2940

-continued

CGGAAGAGCG	CCTGATGCGG	TATTTTCTCC	TTACGCATCT	GTGCGGTATT	TCACACCGCA	3000
TATGGTGCAC	TCTCAGTACA	ATCTGTCTCTG	ATGCCGCATA	GTTAAGCCAG	TATACACTCC	3060
GCTATCGCTA	CGTACTGGG	TCATGGCTGC	GCCCCGACAC	CCGCCAACAC	CCGCTGACGC	3120
GCCCTGACGG	GCTTGTCTGC	TCCCGGCATC	CGCTTACAGA	CAAGCTGTGA	CCGTCTCCGG	3180
GAGCTGCATG	TGTCAGAGGT	TTTCACCGTC	ATCACCGAAA	CGCGCGAGGC	AGCAGATCAA	3240
TTCCGCGCGG	AAGGCGAAGC	GGCATGCATT	TACGTTGACA	CCATCGAATG	GCGCAAAACC	3300
TTTCGCGGTA	TGGCATGATA	GCGCCCGGAA	GAGAGTCAAT	TCAGGGTGGT	GAATGTGAAA	3360
CCAGTAACGT	TATACGATGT	CGCAGAGTAT	GCCGGTGTCT	CTTATCAGAC	CGTTTCCCGC	3420
GTGGTGAACC	AGGCCAGCCA	CGTTTCTGCG	AAAACGCGGG	AAAAAGTGA	AGCGGCGATG	3480
GCGGAGCTGA	ATTACATTCC	CAACC CGCTG	GCACAACAAC	TGGCGGGCAA	ACAGTCGTTG	3540
CTGATTGCGG	TTGCCACCTC	CAGTCTGGCC	CTGCACGCGC	CGTCGCAAAAT	TGTCGCGGCG	3600
ATTAAATCTC	GCGCCGATCA	ACTGGGTGCC	AGCGTGGTGG	TGTCGATGGT	AGAACGAAGC	3660
GGCGTCGAAG	CCTGTAAAGC	GGCGGTGCAC	AATCTTCTCG	CGCAACCGGT	CAGTGGGCTG	3720
ATCATTAACT	ATCCGCTGGA	TGACCAGGAT	GCCATTGCTG	TGGAAGCTGC	CTGCACTAAT	3780
GTTCCGGCGT	TATTTCTTGA	TGTCTCTGAC	CAGACACCCA	TCAACAGTAT	TATTTTCTCC	3840
CATGAAGACG	GTACCGGACT	GGCGTGGAG	CATCTGGTGC	CATTGGGTCA	CCAGCAAATC	3900
GCGCTGTTAG	CGGGCCCAT	AAGTTCTGTC	TCGGCGCGTC	TGCGTCTGGC	TGGCTGGCAT	3960
AAATATCTCA	CTCGCAATCA	AATTCAGCCG	ATAGCGGAAC	GGGAAGCGA	CTGGAGTGCC	4020
ATGTCCGGTT	TTCAACAAC	CATGCAAATG	CTGAATGAGG	GCATCGTTCC	CACTGCGATG	4080
CTGGTTGCCA	ACGATCAGAT	GGCGTGGGC	GCAATGCGCG	CCATTACCGA	GTCGGGGCTG	4140
CGCGTTGGTG	CGGATATCTC	GGTAGTGGGA	TACGACGATA	CCGAAGACAG	CTCATGTTAT	4200
ATCCCGCCGT	TAACCACCAT	CAAACAGGAT	TTTCGCCTGC	TGGGGCAAAC	CAGCGTGGAC	4260
CGCTTGCTGC	AACTCTCTCA	GGCCAGGCG	GTGAAGGCA	ATCAGCTGTT	GCCCGTCTCA	4320
CTGGTGAAAA	GAAAAACCAC	CCTGGCGCCC	AATACGAAA	CCGCTCTCC	CCGCGCGTTG	4380
GCCGATTCAT	TAATGCAGCT	GGCACGACAG	GTTTCCCGAC	TGGAAGCGG	GCAGTGAGCG	4440
CAACGCAATT	AATGTGAGTT	AGCGCAATT	GATCTT			4476

(2) INFORMATION FOR SEQ ID NO:3:

(i) SEQUENCE CHARACTERISTICS:

- (A) LENGTH: 1337 base pairs
- (B) TYPE: nucleic acid
- (C) STRANDEDNESS: single
- (D) TOPOLOGY: linear

(ii) MOLECULE TYPE: DNA (genomic)

(iii) HYPOTHETICAL: NO

(iv) ANTI-SENSE: NO

(vi) ORIGINAL SOURCE:

- (A) ORGANISM: Rat lens aldose reductase gene

(xi) SEQUENCE DESCRIPTION: SEQ ID NO:3:

CTCTTGCGGG	TCGTTGTGCG	TAACTGTCAG	CAATCATGGC	TAGCCATCTG	GAACTCAACA	60
ACGGACCAAA	GATGCCAC	CTGGGTCTGG	GCACCTGGAA	GTCTCCTCCT	GGCCAGGTGA	120
CCGAGGCTGT	GAAGTTGCT	ATCGACATGG	GGTATCGCCA	CATTGACTGC	GCCAGGTGT	180
ACCAGAATGA	GAAGGAGGTG	GGGGTGGCCC	TCCAGGAGAA	GCTCAAGGAG	CAGGTGGTGA	240

-continued

```

AGCGCCAGGA TCTCTTCATT GTCAGCAAGC TGTGGTGAC GTTCCACGAC CAGAGCATGG 300
TGAAAGGGGG CTGCCAGAAG ACGCTGAGCG ACCTGCAGCT GGACTACCTG GACCTCTACC 360
TTATTCAGTG GCCAACTGGC TTCAAGCCTG GGCCTGACTA TTTCCCCCTG GATGCATCGG 420
GAAACGTGAT TCCTAGTGAC ACCGATTTTG TGGACACTTG GACGGCTATG GAGCAACTAG 480
TGGATGAAGG TTTGGTAAAA GCAATCGGAG TCTCCAATT CAACCCCTTT CAGATTGAGA 540
GGATCTTGAA CAAACCTGGC TTAAAGTATA AGCCTGCTGT TAACCAGATC GAGTGCCACC 600
CATACCTAAC TCAGGAGAAG CTGATTGAGT ACTGCCATTG CAAAGGCATC GTGGTGACTG 660
CATACAGTCC CCTTGGTTCT CTGACAGGC CCTGGGCCAA GCCTGAGGAC CCCTCTCTCC 720
TGGAGGATCC CAGGATCAAG GAAATGCGAG CCAAGTACAA TAAAACCTACA GCCCAGGTGC 780
TGATCCGGTT CCCCATCCAA AGGAACCTGG TCGTGATCCC CAAGTCTGTG ACACCAGCAC 840
GTATTGCTGA GAACTTTAAG GTCTTTGACT TTGAGCTGAG CAATGAGGAC ATGGCCACTC 900
TACTCAGCTA CAACAGGAAC TGGAGGGTGT GCGCCTTGAT GAGCTGTGCC AAACACAAGG 960
ATTACCCCTT CCACGCAGAA GTCTGAAGCT GTGGTGGACG AATCCTGCTC CTCCCAAGC 1020
GACTTAACAC ATGTTCTTTC TGCCTCATCT GCCCTTGCAA GTGTCCCTCT GCACTGGGTG 1080
GCACCTTGCA GACCAGATGG TGAGAGTTTG TTAGTTTGAC GTAGAATGTG GAGGGCAGTA 1140
CCAGTAGCTG AGGAGTTTCT TCGGCCTTTC TTGGTCTTCT TCCCACCTGG AGGACTTTAA 1200
CACGAGTACC TTTTCCAACC AAAGAGAAAG CAAGATTTAT AGCCCAAGTC ATGCCACTAA 1260
CACTTAAATT TGAGTGCTTA GAACTCCAGT CCTATGGGGG TCAGACTTTT TGCCTCAAAT 1320
AAAAACTGCT TTTGTGCG 1337

```

(2) INFORMATION FOR SEQ ID NO:4:

(i) SEQUENCE CHARACTERISTICS:

- (A) LENGTH: 316 amino acids
- (B) TYPE: amino acid
- (C) STRANDEDNESS: single
- (D) TOPOLOGY: linear

(ii) MOLECULE TYPE: protein

(iii) HYPOTHETICAL: NO

(iv) ANTI-SENSE: NO

(vi) ORIGINAL SOURCE:

- (A) ORGANISM: Rat lens aldose reductase

(xi) SEQUENCE DESCRIPTION: SEQ ID NO:4:

```

Met Ala Ser His Leu Glu Leu Asn Asn Gly Thr Lys Met Pro Thr Leu
1           5           10          15
Gly Leu Gly Thr Trp Lys Ser Pro Pro Gly Gln Val Thr Glu Ala Val
20          25          30
Lys Val Ala Ile Asp Met Gly Tyr Arg His Ile Asp Cys Ala Gln Val
35          40          45
Tyr Gln Asn Glu Lys Glu Val Gly Val Ala Leu Gln Glu Lys Leu Lys
50          55          60
Glu Gln Val Val Lys Arg Gln Asp Leu Phe Ile Val Ser Lys Leu Trp
65          70          75          80
Cys Thr Phe His Asp Gln Ser Met Val Lys Gly Ala Cys Gln Lys Thr
85          90          95
Leu Ser Asp Leu Gln Leu Asp Tyr Leu Asp Leu Tyr Leu Ile His Trp
100         105         110

```

-continued

Pro Thr Gly Phe Lys Pro Gly Pro Asp Tyr Phe Pro Leu Asp Ala Ser
 115 120 125

Gly Asn Val Ile Pro Ser Asp Thr Asp Phe Val Asp Thr Trp Thr Ala
 130 135 140

Met Glu Gln Leu Val Asp Glu Gly Leu Val Lys Ala Ile Gly Val Ser
 145 150 155 160

Asn Phe Asn Pro Leu Gln Ile Glu Arg Ile Leu Asn Lys Pro Gly Leu
 165 170 175

Lys Tyr Lys Pro Ala Val Asn Gln Ile Glu Cys His Pro Tyr Leu Thr
 180 185 190

Gln Glu Lys Leu Ile Glu Tyr Cys His Cys Lys Gly Ile Val Val Thr
 195 200 205

Ala Tyr Ser Pro Leu Gly Ser Pro Asp Arg Pro Trp Ala Lys Pro Glu
 210 215 220

Asp Pro Ser Leu Leu Glu Asp Pro Arg Ile Lys Glu Ile Ala Ala Lys
 225 230 235 240

Tyr Asn Lys Thr Thr Ala Gln Val Leu Ile Arg Phe Pro Ile Gln Arg
 245 250 255

Asn Leu Val Val Ile Pro Lys Ser Val Thr Pro Ala Arg Ile Ala Glu
 260 265 270

Asn Phe Lys Val Phe Asp Phe Glu Leu Ser Asn Glu Asp Met Ala Thr
 275 280 285

Leu Leu Ser Tyr Asn Arg Asn Trp Arg Val Cys Ala Leu Met Ser Cys
 290 295 300

Ala Lys His Lys Asp Tyr Pro Phe His Ala Glu Val
 305 310 315

(2) INFORMATION FOR SEQ ID NO:5:

(i) SEQUENCE CHARACTERISTICS:

- (A) LENGTH: 5181 base pairs
- (B) TYPE: nucleic acid
- (C) STRANDEDNESS: single
- (D) TOPOLOGY: circular

(ii) MOLECULE TYPE: DNA (genomic)

(iii) HYPOTHETICAL: NO

(iv) ANTI-SENSE: NO

(vi) ORIGINAL SOURCE:

- (A) ORGANISM: Yeast shuttle vector YEp352

(xi) SEQUENCE DESCRIPTION: SEQ ID NO:5:

ATGACCATGA TTACGAATTC GAGCTCGGTA CCCGGGGATC CTCTAGAGTC GACCTGCAGG 60

CATGCAAGCT TGGCACTGGC CGTCGTTTTA CAACGTCGTG ACTGGGAAAA CCCTGGCGTT 120

ACCCAACCTTA ATCGCCTTGC AGCACATCCC CCCTTCGCCA GCTGGCGTAA TAGCGAAGAG 180

GCCCGCACCG ATCGCCCTTC CCAACAGTTG CGCAGCCTGA ATGGCGAATG GCGCCTGATG 240

CGGTATTTTC TCCTTACGCA TCTGTGCGGT ATTTACACACC GCATAGGGTA ATAAGTATA 300

TAATTAAATT GAAGCTCTAA TTTGTGAGTT TAGTATACAT GCATTTACTT ATAATACAGT 360

TTTTTAGTTT TGCTGGCCGC ATCTTCTCAA ATATGCTTCC CAGCCTGCTT TTCTGTAACG 420

TTCACCCCTCT ACCTTAGCAT CCCTTCCCTT TGCAAATAGT CCTCTTCCAA CAATAATAAT 480

GTCAGATCCT GTAGAGACCA CATCATCCAC GGTTCATATAC TGTGACCCA ATGCGTCTCC 540

CTTGTCATCT AAACCCACAC CGGGTGTGAT AATCAACCAA TCGTAACCTT CATCTCTTCC 600

-continued

ACCCATGTCT	CTTTGAGCAA	TAAAGCCGAT	AACAAAATCT	TTGTCGCTCT	TCGCAATGTC	660
AACAGTACCC	TTAGTATATT	CTCCAGTAGA	TAGGGAGCCC	TTGCATGACA	ATTCTGCTAA	720
CATCAAAAGG	CCTCTAGGTT	CCTTTGTTAC	TTCTTCTGCC	GCCTGCTTCA	AACCGCTAAC	780
AATACCTGGG	CCCACCACAC	CGTGTGCATT	CGTAATGTCT	GCCCATTCTG	CTATTCTGTA	840
TACACCCGCA	GAGTACTGCA	ATTTGACTGT	ATTACCAATG	TCAGCAAATT	TTCTGTCTTC	900
GAAGAGTAAA	AAATGTACT	TGGCGGATAA	TGCCTTTAGC	GGCTTAACTG	TGCCCTCCAT	960
GGAAAAATCA	GTCAAGATAT	CCACATGTGT	TTTTAGTAAA	CAAATTTTGG	GACCTAATGC	1020
TTCAACTAAC	TCCAGTAATT	CCTTGGTGGT	ACGAACATCC	AATGAAGCAC	ACAAGTTTGT	1080
TTGCTTTTCG	TGCATGATAT	TAAATAGCTT	GGCAGCAACA	GGACTAGGAT	GAGTAGCAGC	1140
ACGTTCCTTA	TATGTAGCTT	TCGACATGAT	TTATCTTCGT	TTCGGTTTTT	GTTCTGTGCA	1200
GTTGGGTTAA	GAATACTGGG	CAATTTTCATG	TTTCTTCAAC	ACTACATATG	CGTATATATA	1260
CCAATCTAAG	TCTGTGCTCC	TTCTTCGTT	CTTCTTCTG	TTCGGAGATT	ACCGAATCAA	1320
AAAAATTTCA	AAGAAACCGA	AATCAAAAAA	AAGAATAAAA	AAAAATGAT	GAATTGAAAA	1380
GCTCTTGTTA	CCCATCATTT	AATTTTGAAC	ATCCGAACCT	GGGAGTTTTT	CCTGAAACAG	1440
ATAGTATATT	TGAACCTGTA	TAATAATATA	TAGTCTAGCG	CTTTACGGAA	GACAATGTAT	1500
GTATTTCCGGT	TCCTGGAGAA	ACTATTGCAT	CTATTGCATA	GGTAATCTTG	CACGTCCGAT	1560
CCCCGGTTCA	TTTTCTGCGT	TTCCATCTTG	CACTTCAATA	GCATATCTTT	GTTAACGAAG	1620
CATCTGTGCT	TCATTTTGTA	GAACAAAAAT	GCAACGCGAG	AGCGCTAATT	TTTCAAACAA	1680
AGAATCTGAG	CTGCATTTTT	ACAGAACAGA	AATGCAACGC	GAAAGCGCTA	TTTTACCAAC	1740
GAAGAATCTG	TGCTTCATTT	TTGTAAAACA	AAAATGCAAC	GCGAGAGCGC	TAATTTTTC	1800
AACAAAAGAT	CTGAGCTGCA	TTTTTACAGA	ACAGAAATGC	AACCGGAGAG	CGCTATTTTA	1860
CCAACAAAGA	ATCTATACTT	CTTTTTTGTT	CTACAAAAAT	GCATCCCGAG	AGCGCTATTT	1920
TTCTAACAAA	GCATCTTAGA	TTACTTTTTT	TCTCCTTGT	GCGCTCTATA	ATGCAGTCTC	1980
TTGATAACTT	TTTGCACTGT	AGSTCCGTTA	AGGTTAGAAG	AAGGCTACTT	TGGTGCTTAT	2040
TTTCTCTTCC	ATAAAAAAAG	CCTGACTCCA	CTTCCCGCGT	TTACTGATTA	CTAGCGAAGC	2100
TGCGGGTGCA	TTTTTTCAAG	ATAAAGGCAT	CCCCGATTAT	ATTCTATACC	GATGTGGATT	2160
GCGCATACTT	TGTGAACAGA	AAGTGATAGC	GTTGATGATT	CTTCATTGGT	CAGAAAATTA	2220
TGAACGGTTT	CTTCTATTTT	GTCTCTATAT	ACTACGTATA	GAAATGTTT	ACATTTTCGT	2280
ATTGTTTTTCG	ATTCACCTCA	TGAATAGTTC	TTACTACAAT	TTTTTTGTCT	AAAGAGTAAT	2340
ACTAGAGATA	AACATAAAAA	ATGTAGAGGT	CGAGTTTAGA	TGCAAGTCA	AGGAGCGAAA	2400
GGTGGATGGG	TAGGTTATAT	AGGGATATAG	CACAGAGATA	TATAGCAAAG	AGATACTTTT	2460
GAGCAATGTT	TGTGGAAGCG	GTATTGCGAA	TATTTTAGTA	GCTCGTTACA	GTCCGGTGCG	2520
TTTTTGTTTT	TTTGAAAGTG	CGTCTCAGA	GCGCTTTTGG	TTTTCAAAG	CGCTCTGAAG	2580
TTCTATACT	TTCTAGCTAG	AGAATAGGAA	CTTCGGAATA	GAACTTCAA	AGCGTTCCG	2640
AAAACGAGCG	CTTCCGAAAA	TGCAACGCGA	GCTGCGCACA	TACAGCTCAC	TGTTACGTC	2700
GCACCTATAT	CTGCGTGTG	CCTGTATATA	TATATACATG	AGAAGAACGG	CATAGTGCCT	2760
GTTTATGCTT	AAATGCGTTA	TGGTGCACCT	TCAGTACAAT	CTGCTCTGAT	GCCGCATAGT	2820
TAAGCCAGCC	CCGACACCCG	CCAACACCCG	CTGACGCGCC	CTGACGGGCT	TGCTGTCTCC	2880
CGGCATCCCG	TTACAGACAA	GCTGTGACCG	TCTCCGGGAG	CTGCATGTGT	CAGAGTTTTT	2940

-continued

CACCGTCATC	ACCGAAACGC	GCGAGACGAA	AGGGCCTCGT	GATACGCCTA	TTTTTATAGG	3000
TTAATGTCAT	GATAATAATG	GTTTCTTAGA	CGTCAGGTGG	CACTTTTCGG	GGAAATGTGC	3060
GCGGAACCCC	TATTTGTTTA	TTTTTCTAAA	TACATTCAAA	TATGTATCCG	CTCATGAGAC	3120
AATAACCCCTG	ATAAATGCTT	CAATAATATT	GAAAAAGGAA	GAGTATGAGT	ATTCAACATT	3180
TCCGTGTCGC	CCTTATTCCC	TTTTTTGCGG	CATTTTGCCCT	TCCTGTTTTT	GCTCACCCAG	3240
AAACGCTGGT	GAAAGTAAAA	GATGCTGAAG	ATCAGTTGGG	TGCACGAGTG	GGTTACATCG	3300
AACTGGATCT	CAACAGCGGT	AAGATCCTTG	AGAGTTTTTCG	CCCCGAAGAA	CGTTTTCCAA	3360
TGATGAGCAC	TTTTAAAGTT	CTGCTATGTG	GCGCGGTATT	ATCCCGTATT	GACGCCGGGC	3420
AAGAGCAACT	CGGTCGCCGC	ATACACTATT	CTCAGAAATGA	CTTGGTTGAG	TACTCACCAG	3480
TCACAGAAAA	GCATCTTACG	GATGGCATGA	CAGTAAGAGA	ATTATGCAGT	GCTGCCATAA	3540
CCATGAGTGA	TAACACTGCG	GCCAACCTTAC	TTCTGACAAC	GATCGGAGGA	CCGAAGGAGC	3600
TAACCGCTTT	TTTGACAAC	ATGGGGGATC	ATGTAACTCG	CCTTGATCGT	TGGGAACCGG	3660
AGCTGAATGA	AGCCATACCA	AACGACGAGC	GTGACACCAC	GATGCCTGTA	GCAATGGCAA	3720
CAACGTTGCG	CAAACATTA	ACTGGCGAAC	TACTTACTCT	AGCTTCCCGG	CAACAATTAA	3780
TAGACTGGAT	GGAGCGGAT	AAAGTTGCAG	GACCACTTCT	GCGCTCGGCC	CTTCCGGCTG	3840
GCTGGTTTTT	TGCTGATAAA	TCTGGAGCCG	GTGAGCGTGG	GTCTCGCGGT	ATCATTCGAG	3900
CACTGGGGCC	AGATGGTAAG	CCCTCCCGTA	TCGTAGTTAT	CTACACGACG	GGGAGTCAGG	3960
CAACTATGGA	TGAACGAAAT	AGACAGATCG	CTGAGATAGG	TGCCTCACTG	ATTAAGCATT	4020
GGTAACTGTC	AGACCAAGTT	TACTCATATA	TACTTTAGAT	TGATTTAAAA	CTTCATTTTT	4080
AATTTAAAAA	GATCTAGGTG	AAGATCCTTT	TTGATAATCT	CATGACCAAA	ATCCCTTAAC	4140
GTGAGTTTTC	GTTCCACTGA	GCGTCAGACC	CCGTAGAAAA	GATCAAAGGA	TCTTCTTGAG	4200
ATCCTTTTTT	TCTGCGCGTA	ATCTGTGTCT	TGCAAACAAA	AAAACCACCG	CTACCAGCGG	4260
TGGTTTGTTT	GCCGGATCAA	GAGCTACCAA	CTCTTTTTTC	GAAGGTAAC	GGCTTCAGCA	4320
GAGCGCAGAT	ACCAAATACT	GTCTTCTTAG	TGTAGCCGTA	GTTAGCCAC	CACTTCAAGA	4380
ACTCTGTAGC	ACCGCTTACA	TACCTCGCTC	TGCTAATCCT	GTTACCAGTG	GCTGCTGCCA	4440
GTGGCGATAA	GTCTGTCTTT	ACCGGTTTGG	ACTCAAGACG	ATAGTTACCG	GATAAGGC	4500
AGCGGTCGGG	CTGAACGGGG	GGTTCGTGCA	CACAGCCCAG	CTTGGAGCGA	ACGACCTACA	4560
CCGAACAGAG	ATACCTACAG	CGTGAGCATT	GAGAAAGCGC	CACGCTTCCC	GAAGGGAGAA	4620
AGGCGGACAG	GTATCCGGTA	AGCGGACGGG	TCGGAACAGG	AGAGCGCACG	AGGGAGCTTC	4680
CAGGGGAAAA	CGCCTGGTAT	CTTTATAGTC	CTGTCCGGTT	TCGCCACCTC	TGACTTGAGC	4740
GTCGATTTTT	GTGATGCTCG	TCAGGGGGG	GGAGCCTATG	GAAAAACGCC	AGCAACGCGG	4800
CCTTTTTTACG	GTTCTTGCC	TTTTGTGTC	CTTTTGCTCA	CATGTTCTTT	CCTGCGTTAT	4860
CCCCGATTC	TGTGGATAAC	CGTATTACCG	CCTTTGAGTG	AGCTGATACC	GCTCGCCGCA	4920
GCCGAACGAC	CGAGCGCAGC	GAGTCAGTGA	GCGAGGAAGC	GGAAGAGCGC	CCAATACGCA	4980
AACCGCCTCT	CCCCGCGCGT	TGGCCGATTC	ATTAATCCAG	CTGGCACGAC	AGGTTTCCCG	5040
ACTGGAAGC	GGGAGTGAG	CGCAACGCAA	TTAATGTGAG	TTACCTCACT	CATTAGGCAC	5100
CCCAGGCTTT	ACACTTTATG	CTTCCGGCTC	GTATGTTGTG	TGGAATTGTG	AGCGGATAAC	5160
AATTTACAC	AGGAAACAGC	T				5181

(2) INFORMATION FOR SEQ ID NO:6:

-continued

(i) SEQUENCE CHARACTERISTICS:
 (A) LENGTH: 506 base pairs
 (B) TYPE: nucleic acid
 (C) STRANDEDNESS: single
 (D) TOPOLOGY: linear

(ii) MOLECULE TYPE: DNA (genomic)

(iii) HYPOTHETICAL: NO

(iv) ANTI-SENSE: NO

(vi) ORIGINAL SOURCE:
 (A) ORGANISM: E. coli methylglyoxal synthase gene

(xi) SEQUENCE DESCRIPTION: SEQ ID NO:6:

TAAGTGCTTA CAGTAATCTG TAGGAAAGTT AACTACGGAT GTACATTATG GAACTGACGA	60
CTCGCACTTT ACCTGCGCGG AACATATTTG CGCTGGTGGC ACACGATCAC TGCAAACAAA	120
TGCTGATGAG CTGGGTGGAA CGGCATCAAC CGTTACTGGA ACAACACGTA CTGTATGCAA	180
CAGGCACACT CGGTAACCTTA ATTTCCCGCG CGACCGGCAT GAACGTCAAC GCGATGTTGA	240
GTGGCCCAAT GGGGGGTGAC CAGCAGGTTG GCGCATTGAT CTCAGAAGGG AAAATTGATG	300
TATTGATTTT CTCTTGGGAT CCACTAAATG CCGTGCCGCA CGATCCTGAC GTGAAAGCCT	360
TGCTGCGTCT GGCACGGTA TGAACATTC CGGTCGCCAC CAACGTGGCA ACGGCAGACT	420
TCATAATCCA GTCGCCGCAT TTCAACGACG CGGTCGATAT TCTGATCCCC GATTATCAGC	480
GTTATCTCGC GGACCGTCTG AAGTAA	506

(2) INFORMATION FOR SEQ ID NO:7:

(i) SEQUENCE CHARACTERISTICS:
 (A) LENGTH: 3524 base pairs
 (B) TYPE: nucleic acid
 (C) STRANDEDNESS: single
 (D) TOPOLOGY: linear

(ii) MOLECULE TYPE: DNA (genomic)

(iii) HYPOTHETICAL: NO

(iv) ANTI-SENSE: NO

(vi) ORIGINAL SOURCE:
 (A) ORGANISM: Pyridine nucleotide transhydrogenase gene

(xi) SEQUENCE DESCRIPTION: SEQ ID NO:7:

CATAAAAATA ATCCTTCGCC TTGGCAAAC CAGGTACTGG TATTGTTATT AACGAGAAAC	60
GTGGCTGATT ATTGCATTTA AACGGTGTA CIGTCTGCGT CATTTTTCAT ATCACATTCC	120
TTAAGCCAAT TTTAATCCTG CTCAAATGAC CGTCTATGCT TAAAAACAG CCGTATCAGC	180
ATCATTACTA CTGAAGCAAC TGAATTGTAT AAGTTAATTT AATGTTAAGT AGTGATTTCGT	240
GCCGGGGCGA TGTCCTGTTT TACCCGACCG TCGAAGACAA TTATCAGTCT TTATCCGGCG	300
TTCTAAGGTT TTTTATCCCAC TATCACGGCT GAATCGTTAA TATTTTGCGA GTTCACGCCG	360
AAATACTGAT TTTTGGCGCT AGATCACAGG CATAATTTTC AGTACGTTAT AGGGCGTTTG	420
TTACTAATTT ATTTTAACGG AGTAACATTT AGCTCGTACA TGAGCAGCTT GTGTGGCTCC	480
TGACACAGGC AAACCATCAT CAATAAAACC GATGGAAGGG AATATCATGC GAATTGGCAT	540
ACCAAGAGAA CGGTTAACCA ATGAAACCCG TGTTCAGCA ACGCCAAAAA CAGTGAACA	600
GCTGTGAAA CTGGGTTTTA CCGTCGCGGT AGAGAGCGGC GCGGGTCAAC TGGCAAGTTT	660
TGACGATAAA GCGTTTGTGC AAGCGGGCGC TGAATTTGTA GAAGGGAATA GCGTCTGGCA	720

-continued

GTCAGAGATC	ATTCTGAAGG	TCAATGCGCC	GTTAGATGAT	GAAATTGCGT	TACTGAATCC	780
TGGGACAACG	CTGTGAGATT	TTATCTGGCC	TGCGCAGAAT	CCGGAATTAA	TGCAAAAAC	840
TGCGGAACGT	AACGTGACCG	TGATGGCGAT	GACTCTGTG	CCGCGTATCT	CACGCGACA	900
ATCGCTGGAC	GACTAAGCT	CGATGGCGAA	CATCGCCGGT	TATCGCGCCA	TTGTTGAAGC	960
GGCACATGAA	TTTGGGCGCT	TCTTTACCGG	GCAAATTACT	GCGGCCGGGA	AAGTGCCACC	1020
GGCAAAAGTG	ATGTTGATTG	GTGCGGGTGT	TGCAGGTCTG	GCCGCCATTG	GCGCAGCAA	1080
CAGTCTCGGC	GCGATTGTGC	GTGCATTCTG	CACCCGCCCG	GAAGTGAAG	AACAAGTTCA	1140
AAGTATGGGC	GCGGAATTCC	TCGAGCTGGA	TTTTAAAGAG	GAAGCTGGCA	GCGGCGATGG	1200
CTATGCCAAA	GTGATGTCGG	ACGCGTTCAT	CAAAGCGGAA	ATGGAACTCT	TTGCCGCCCA	1260
GGCAAAAGAG	GTCGATATCA	TTGTCAACCAC	CGCGTTTATT	CCAGGCAAAC	CAGCGCCGAA	1320
GCTAATTACC	CGTGAAATGG	TTGACTCCAT	GAAGGCGGGC	AGTGTGATTG	TCGACTTGGC	1380
AGCCCAAAAC	GCGGCAACT	GTGAATACAC	CGTGCCGGGT	GAAATCTTCA	CTACGGAAAA	1440
TGGTGTCAA	GTGATTGGTT	ATACCGATCT	TCCGGGCCGT	CTGCCGACGC	AATCCTCACA	1500
GCTTTACGGC	ACAAACCTCG	TTAATCTGCT	GAAACTGTTG	TGCAAAGAGA	AAGACGGCAA	1560
TATCACTGTT	GATTTTGATG	ATGTGGTGAT	TCGCGGCGTG	ACCGTGATCC	GTGCGGGCGA	1620
AATTACCTGG	CCGGCACCGC	CGATTACGGT	ATCAGCTCAG	CCGCAGGCGG	CACAAAAGC	1680
GGCACCCGAA	GTGAAAAC	AGGAAAAATG	TACCTGCTCA	CCGTGGCGTA	AATACCGGTT	1740
GATGGCGCTG	GCAATCATT	TTTTTGGCTG	GATGGCAAGC	GTTGCGCCGA	AAGAATTCCT	1800
TGGGCACTTC	ACCGTTTTTCG	CGCTGGCCCTG	CGTTGTCCGT	TATFACGTGG	TGTGGAATGT	1860
ATCGCACCGC	CTGCATACAC	CGTTGATGTC	GGTCACCAAC	GCGATTCAG	GGATTATTGT	1920
TGTCGGAGCA	CTGTTGCAGA	TTGGCCAGGG	CGGCTGGGTT	AGCTTCCTTA	GTTTTATCGC	1980
GGTGCTTATA	GCCAGCATT	ATATTTTCGG	TGGCTTCACC	GTGACTCAGC	GCATGCTGAA	2040
AATGTTCCCG	AAAAATTAAG	GGTAACATA	TGTCTGGAGG	ATTAGTTACA	GCTGCATACA	2100
TTGTTGCCGC	GATCCTGTTT	ATCTTCAGTC	TGGCCGGTCT	TTCGAAACAT	GAAACGTCTC	2160
GCCAGGGTAA	CAACTTCGGT	ATCGCCGGGA	TGGCGATTGC	GTTAATCGCA	ACCATTTTTG	2220
GACCCGATAC	GGGTAATGTT	GGCTGGATCT	TGCTGGCGAT	GGTCATTGGT	GGGGCAATTG	2280
GTATCCGTCT	GGCGAAGAAA	GTTGAAATGA	CCGAAATGCC	AGAACTGGTG	GCGATCCTGC	2340
ATAGCTTCGT	GGTCTGGCG	GCACTGCTGG	TTGGCTTTAA	CAGCTATCTG	CATCATGACG	2400
CGGGAAATGG	ACCGATTCTG	GTCAATATTC	ACCTGACGGA	AGTGTTCCTC	GGTATCTTCA	2460
TCGGGGCGGT	AACGTTACAG	GGTTCGGTGG	TGGCGTTCGG	CAAACGTGTG	GGCAAGATTT	2520
CGTCTAAACC	ATTGATGCTG	CCAAACCGTC	ACAAAATGAA	CCTGGCGGCT	CTGGTCGTTT	2580
CCTTCTGCT	GCTGATTGTA	TTGTTTCGCA	CGGACAGCGT	CGGCTGCAA	GTGCTGGCAT	2640
TGCTGATAAT	GACCCGAATT	GCGCTGGTAT	TCGGCTGGCA	TTTAGTCGCC	TCCATCGGTG	2700
GTGCAGATAT	GCCAGTGGTG	GTGTCGATGC	TGAACTCGTA	CTCCGGCTGG	GCGGCTGCGG	2760
CTGCGGGCTT	TATGCTCAGC	AACGACCTGC	TGATTGTGAC	CGGTGCGCTG	GTCGGTTCTT	2820
CGGGGGCTAT	CCTTCTTAC	ATTATGTGTA	AGGCGATGAA	CCGTTCTTTT	ATCAGCGTTA	2880
TTGCGGGTGG	TTTCGGCACC	GACGGCTCTT	CTACTGGCGA	TGATCAGGAA	GTGGGTGAGC	2940
ACCCGCAAA	CACCGCAGAA	GAGACAGCGG	AACTGCTGAA	AAACTCCCAT	TCAGTGATCA	3000
TTACTCCGGG	GTACGGCATG	GCACTCGCGC	AGGCGCAATA	TCCTGTCGCT	GAAATFACTG	3060
AGAAATGCG	CGCTCGTGGT	ATTAATGTGC	GTTTCGGTAT	CCACCCGGTC	GCGGGGCGTT	3120

-continued

TGCCTGGACA TATGAACGTA TTGCTGGCTG AAGCAAAAGT ACCGTATGAC ATCGTGCTGG 3180
 AAATGGACGA GATCAATGAT GACTTTGCTG ATACCGATAC CGTACTGGTG ATTGGTGCTA 3240
 ACGATACGGT TAACCCGGCG GCGCAGGATG ATCCGAAGAG TCCGATTGCT GGTATGCCTG 3300
 TGCTGGAAGT GTGGAAAGCG CAGAACGTGA TTGTCTTTAA ACGTTCGATG AACACTGGCT 3360
 ATGCTGGTGT GCAAAACCCG CTGTTCTTCA AGGAAAACAC CCACATGCTG TTTGGTGACG 3420
 CCAAAGCCAG CGTGGATGCA ATCCTGAAAG CTCTGTAACC CTCGACTCTG CTGAGGCCGT 3480
 CACTCTTTAT TGAGATCGCT TAACAGAACG GCGATGCGAC TCTA 3524

(2) INFORMATION FOR SEQ ID NO:8:

(i) SEQUENCE CHARACTERISTICS:

- (A) LENGTH: 510 amino acids
- (B) TYPE: amino acid
- (C) STRANDEDNESS: single
- (D) TOPOLOGY: linear

(ii) MOLECULE TYPE: peptide

(iii) HYPOTHETICAL: NO

(iv) ANTI-SENSE: NO

(v) FRAGMENT TYPE: N-terminal

(vi) ORIGINAL SOURCE:

- (A) ORGANISM: Pyridine nucleotide transhydrogenase, subunit A

(xi) SEQUENCE DESCRIPTION: SEQ ID NO:8:

Met Arg Ile Gly Ile Pro Arg Glu Arg Leu Thr Asn Glu Thr Arg Val
 1 5 10 15
 Ala Ala Thr Pro Lys Thr Val Glu Gln Leu Leu Lys Leu Gly Phe Thr
 20 25 30
 Val Ala Val Glu Ser Gly Ala Gly Gln Leu Ala Ser Phe Asp Asp Lys
 35 40 45
 Ala Phe Val Gln Ala Gly Ala Glu Ile Val Glu Gly Asn Ser Val Trp
 50 55 60
 Gln Ser Glu Ile Ile Leu Lys Val Asn Ala Pro Leu Asp Asp Glu Ile
 65 70 75 80
 Ala Leu Leu Asn Pro Gly Thr Thr Leu Val Ser Phe Ile Trp Pro Ala
 85 90 95
 Gln Asn Pro Glu Leu Met Gln Lys Leu Ala Glu Arg Asn Val Thr Val
 100 105 110
 Met Ala Met Asp Ser Val Pro Arg Ile Ser Arg Ala Gln Ser Leu Asp
 115 120 125
 Ala Leu Ser Ser Met Ala Asn Ile Ala Gly Tyr Arg Ala Ile Val Glu
 130 135 140
 Ala Ala His Glu Phe Gly Arg Phe Phe Thr Gly Gln Ile Thr Ala Ala
 145 150 155 160
 Gly Lys Val Pro Pro Ala Lys Val Met Val Ile Gly Ala Gly Val Ala
 165 170 175
 Gly Leu Ala Ala Ile Gly Ala Ala Asn Ser Leu Gly Ala Ile Val Arg
 180 185 190
 Ala Phe Asp Thr Arg Pro Glu Val Lys Glu Gln Val Gln Ser Met Gly
 195 200 205
 Ala Glu Phe Leu Glu Leu Asp Phe Lys Glu Glu Ala Gly Ser Gly Asp
 210 215 220

-continued

Gly	Tyr	Ala	Lys	Val	Met	Ser	Asp	Ala	Phe	Ile	Lys	Ala	Glu	Met	Glu
225					230					235				240	
Leu	Phe	Ala	Ala	Gln	Ala	Lys	Glu	Val	Asp	Ile	Ile	Val	Thr	Thr	Ala
			245						250					255	
Leu	Ile	Pro	Gly	Lys	Pro	Ala	Pro	Lys	Leu	Ile	Thr	Arg	Glu	Met	Val
			260					265					270		
Asp	Ser	Met	Lys	Ala	Gly	Ser	Val	Ile	Val	Asp	Leu	Ala	Ala	Gln	Asn
		275					280					285			
Gly	Gly	Asn	Cys	Glu	Tyr	Thr	Val	Pro	Gly	Glu	Ile	Phe	Thr	Thr	Glu
	290					295					300				
Asn	Gly	Val	Lys	Val	Ile	Gly	Tyr	Thr	Asp	Leu	Pro	Gly	Arg	Leu	Pro
305					310					315					320
Thr	Gln	Ser	Ser	Gln	Leu	Tyr	Gly	Thr	Asn	Leu	Val	Asn	Leu	Leu	Lys
				325					330					335	
Leu	Leu	Cys	Lys	Glu	Lys	Asp	Gly	Asn	Ile	Thr	Val	Asp	Phe	Asp	Asp
			340					345					350		
Val	Val	Ile	Arg	Gly	Val	Thr	Val	Ile	Arg	Ala	Gly	Glu	Ile	Thr	Trp
		355					360					365			
Pro	Ala	Pro	Pro	Ile	Gln	Val	Ser	Ala	Gln	Pro	Gln	Ala	Ala	Gln	Lys
	370					375					380				
Ala	Ala	Pro	Glu	Val	Lys	Thr	Glu	Glu	Lys	Cys	Thr	Cys	Ser	Pro	Trp
385					390					395					400
Arg	Lys	Tyr	Ala	Leu	Met	Ala	Leu	Ala	Ile	Ile	Leu	Phe	Gly	Trp	Met
			405						410					415	
Ala	Ser	Val	Ala	Pro	Lys	Glu	Phe	Leu	Gly	His	Phe	Thr	Val	Phe	Ala
			420					425					430		
Leu	Ala	Cys	Val	Val	Gly	Tyr	Tyr	Val	Val	Trp	Asn	Val	Ser	His	Ala
		435					440					445			
Leu	His	Thr	Pro	Leu	Met	Ser	Val	Thr	Asn	Ala	Ile	Ser	Gly	Ile	Ile
	450					455					460				
Val	Val	Gly	Ala	Leu	Leu	Gln	Ile	Gly	Gln	Gly	Gly	Trp	Val	Ser	Phe
465					470					475					480
Leu	Ser	Phe	Ile	Ala	Val	Leu	Ile	Ala	Ser	Ile	Asn	Ile	Phe	Gly	Gly
			485						490					495	
Phe	Thr	Val	Thr	Gln	Arg	Met	Leu	Lys	Met	Phe	Arg	Lys	Asn		
			500					505					510		

(2) INFORMATION FOR SEQ ID NO:9:

(i) SEQUENCE CHARACTERISTICS:

- (A) LENGTH: 462 amino acids
- (B) TYPE: amino acid
- (C) STRANDEDNESS: single
- (D) TOPOLOGY: linear

(ii) MOLECULE TYPE: peptide

(iii) HYPOTHETICAL: NO

(iv) ANTI-SENSE: NO

(v) FRAGMENT TYPE: N-terminal

(vi) ORIGINAL SOURCE:

- (A) ORGANISM: Pyridine nucleotide transhydrogenase, subunit B

(xi) SEQUENCE DESCRIPTION: SEQ ID NO:9:

Met	Ser	Gly	Gly	Leu	Val	Thr	Ala	Ala	Tyr	Ile	Val	Ala	Ala	Ile	Leu
1				5					10					15	

-continued

Phe	Ile	Phe	Ser	Leu	Ala	Gly	Leu	Ser	Lys	His	Glu	Thr	Ser	Arg	Gln
			20					25					30		
Gly	Asn	Asn	Phe	Gly	Ile	Ala	Gly	Met	Ala	Ile	Ala	Leu	Ile	Ala	Thr
	35						40					45			
Ile	Phe	Gly	Pro	Asp	Thr	Gly	Asn	Val	Gly	Trp	Ile	Leu	Leu	Ala	Met
	50					55					60				
Val	Ile	Gly	Gly	Ala	Ile	Gly	Ile	Arg	Leu	Ala	Lys	Lys	Val	Glu	Met
65					70					75				80	
Thr	Glu	Met	Pro	Glu	Leu	Val	Ala	Ile	Leu	His	Ser	Phe	Val	Gly	Leu
				85					90					95	
Ala	Ala	Val	Leu	Val	Gly	Phe	Asn	Ser	Tyr	Leu	His	His	Asp	Ala	Gly
			100					105					110		
Met	Ala	Pro	Ile	Leu	Val	Asn	Ile	His	Leu	Thr	Glu	Val	Phe	Leu	Gly
		115					120					125			
Ile	Phe	Ile	Gly	Ala	Val	Thr	Phe	Thr	Gly	Ser	Val	Val	Ala	Phe	Gly
	130					135					140				
Lys	Leu	Cys	Gly	Lys	Ile	Ser	Ser	Lys	Pro	Leu	Met	Leu	Pro	Asn	Arg
145					150					155					160
His	Lys	Met	Asn	Leu	Ala	Ala	Leu	Val	Val	Ser	Phe	Leu	Leu	Leu	Ile
			165						170						175
Val	Phe	Val	Arg	Thr	Asp	Ser	Val	Gly	Leu	Gln	Val	Leu	Ala	Leu	Leu
			180					185					190		
Ile	Met	Thr	Ala	Ile	Ala	Leu	Val	Phe	Gly	Trp	His	Leu	Val	Ala	Ser
		195					200					205			
Ile	Gly	Gly	Ala	Asp	Met	Pro	Val	Val	Val	Ser	Met	Leu	Asn	Ser	Tyr
	210					215					220				
Ser	Gly	Trp	Ala	Ala	Ala	Ala	Ala	Gly	Phe	Met	Leu	Ser	Asn	Asp	Leu
225					230					235					240
Leu	Ile	Val	Thr	Gly	Ala	Leu	Val	Gly	Ser	Ser	Gly	Ala	Ile	Leu	Ser
				245					250					255	
Tyr	Ile	Met	Cys	Lys	Ala	Met	Asn	Arg	Ser	Phe	Ile	Ser	Val	Ile	Ala
			260					265					270		
Gly	Gly	Phe	Gly	Thr	Asp	Gly	Ser	Ser	Thr	Gly	Asp	Asp	Gln	Glu	Val
		275					280					285			
Gly	Glu	His	Arg	Glu	Ile	Thr	Ala	Glu	Glu	Thr	Ala	Glu	Leu	Leu	Lys
	290					295					300				
Asn	Ser	His	Ser	Val	Ile	Ile	Thr	Pro	Gly	Tyr	Gly	Met	Ala	Val	Ala
305					310					315					320
Gln	Ala	Gln	Tyr	Pro	Val	Ala	Glu	Ile	Thr	Glu	Lys	Leu	Arg	Ala	Arg
				325					330					335	
Gly	Ile	Asn	Val	Arg	Phe	Gly	Ile	His	Pro	Val	Ala	Gly	Arg	Leu	Pro
		340						345					350		
Gly	His	Met	Asn	Val	Leu	Leu	Ala	Glu	Ala	Lys	Val	Pro	Tyr	Asp	Ile
		355					360					365			
Val	Leu	Glu	Met	Asp	Glu	Ile	Asn	Asp	Asp	Phe	Ala	Asp	Thr	Asp	Thr
	370					375					380				
Val	Leu	Val	Ile	Gly	Ala	Asn	Asp	Thr	Val	Asn	Pro	Ala	Ala	Gln	Asp
385					390					395					400
Asp	Pro	Lys	Ser	Pro	Ile	Ala	Gly	Met	Pro	Val	Leu	Glu	Val	Trp	Lys
				405					410					415	
Ala	Gln	Asn	Val	Ile	Val	Phe	Lys	Arg	Ser	Met	Asn	Thr	Gly	Tyr	Ala
			420					425					430		
Gly	Val	Gln	Asn	Pro	Leu	Phe	Phe	Lys	Glu	Asn	Thr	His	Met	Leu	Phe

-continued

435	440	445	
Gly Asp Ala Lys Ala Ser Val Asp Ala Ile Leu Lys Ala Leu			
450	455	460	

(2) INFORMATION FOR SEQ ID NO:10:

(i) SEQUENCE CHARACTERISTICS:
 (A) LENGTH: 1139 base pairs
 (B) TYPE: nucleic acid
 (C) STRANDEDNESS: single
 (D) TOPOLOGY: linear

(ii) MOLECULE TYPE: DNA (genomic)

(iii) HYPOTHETICAL: NO

(iv) ANTI-SENSE: YES

(vi) ORIGINAL SOURCE:
 (A) ORGANISM: Glycerol dehydrogenase gene
 (B) STRAIN: E. coli

(xi) SEQUENCE DESCRIPTION: SEQ ID NO:10:

TACGGCGTAA ACCGTGATGA GTAGAGATTT CCTCGTTAAT ACCTGGCGTA ATAAGTTAGT	60
GGCCCATTTA TGTAGGTCCC GCGACTACAC TAATTAGCAG ACCCGCTTAT GGA CTTCGGC	120
GACTCTTGGC ACCAATCACC ACCCACTGTT TAAACAAAAT CCAAACGAG TTAGGTGACA	180
GCTCTTTTCG AAATTTCTAC GACCAGACCA TCATCTTTAA CGCGGCAAAC CGCACTTAC	240
AAGCGTTTTA CTCATGCTGG CAGACGCACC GTAGCGCCTC TGACGCGTCA CACCGCGTTA	300
AGAGCCATAG CCACCGCCTT TTTGGGAGCT ATGACGGTTT CGTGACCGTG TAAAGTACCC	360
ACAAGGCCAT CGCTAGCGTG GCTGATAGCG GAGATGGCTA CGTGGCACGT CGCGTAAACAG	420
ACAATAGATG TGGCTACTCC CACTCAAAC TGGGATAGAC GACAACGGTT TATTGGGCTT	480
ATACCAGTAA CAGTGTGGT TTTAGCAGCG ACCGCGTGGA CGTGCAGACA ATCGCCGCC	540
ATAGCCGCTA CGCGACCGTT GGACCAAAC TCGCGCACGG ACGAGAGCAT CGCCGCGCTG	600
GTGGTACCGC CCGCCGTTCA CGTGGTCCG ACGCGACCGT GACCGACTTG ACACGATGTT	660
GTGGGACGAC CTTCTTCCG TTTTTCGCTA CGAACGACGG CTTGTCATGC ATCACTGAGG	720
CCGCGACCTC GCGCACTAAC TTCGCTTGTG GATAAACTCG CCACAACCAA AACTTTCACC	780
ACCAGACGAC GCCGCGTGGC TCACGTATTG CCGGACTGGC GATAGGGCCT GCGCGTAGTG	840
ATAATAGTGC CACTTTTICA CCGTAAGCCA TGCGACTGCG TCGACCAAGA CCTTTTACGC	900
GGCCACCTCC TTTAGCTTTG GCATCGACGG GAATCGGTAC GCCATCCAAA CGTTATTGAG	960
AGCGAGTTGA CCTATAATTT CTCTACAGG GCCCGTTTTA CGCTTAACAC CGTCTTCGCC	1020
GTACACGTCT TCCACTTTGG TAAGTGTGT ACGGACCGCC GCGCTGCGGT CTAGTCCAAA	1080
TGCGGCGAGA CGACCATCGG CTGGTCATGC CAGTCGCAA GGACGTTCTC ACCCTTATT	1139

(2) INFORMATION FOR SEQ ID NO:11:

(i) SEQUENCE CHARACTERISTICS:
 (A) LENGTH: 380 amino acids
 (B) TYPE: amino acid
 (C) STRANDEDNESS: single
 (D) TOPOLOGY: linear

(ii) MOLECULE TYPE: protein

(iii) HYPOTHETICAL: NO

(iv) ANTI-SENSE: NO

-continued

(vi) ORIGINAL SOURCE:

(A) ORGANISM: *E. coli* glycerol dehydrogenase

(xi) SEQUENCE DESCRIPTION: SEQ ID NO:11:

Met Pro His Leu Ala Leu Leu Ile Ser Lys Gly Ala Ile Met Asp Arg
 1 5 10 15

Ile Ile Gln Ser Pro Gly Lys Tyr Ile Gln Gly Ala Asp Val Ile Asn
 20 25 30

Arg Leu Gly Glu Tyr Leu Lys Pro Leu Xaa Glu Arg Trp Leu Val Val
 35 40 45

Gly Asp Lys Phe Val Leu Gly Phe Ala Gln Ser Thr Val Glu Lys Ser
 50 55 60

Phe Lys Asp Ala Gly Leu Val Val Glu Ile Ala Pro Phe Gly Gly Glu
 65 70 75 80

Cys Ser Gln Asn Glu Ile Asp Arg Leu Arg Gly Ile Ala Glu Thr Ala
 85 90 95

Gln Cys Gly Ala Ile Leu Gly Ile Gly Gly Gly Lys Thr Leu Asp Thr
 100 105 110

Ala Lys Ala Leu Ala His Phe Met Gly Val Pro Val Ala Ile Ala Pro
 115 120 125

Thr Ile Ala Ser Thr Asp Ala Pro Cys Ser Ala Leu Ser Val Ile Tyr
 130 135 140

Thr Asp Glu Gly Glu Phe Asp Arg Tyr Leu Leu Leu Pro Asn Asn Pro
 145 150 155 160

Asn Met Val Ile Val Asp Thr Lys Ile Val Ala Gly Ala Pro Ala Arg
 165 170 175

Leu Leu Ala Ala Gly Ile Gly Asp Ala Leu Ala Thr Trp Phe Glu Ala
 180 185 190

Arg Ala Cys Ser Arg Ser Gly Ala Thr Thr Met Ala Gly Gly Lys Cys
 195 200 205

Thr Gln Ala Ala Leu Ala Leu Ala Glu Leu Cys Tyr Asn Thr Leu Leu
 210 215 220

Glu Glu Gly Glu Lys Ala Met Leu Ala Ala Glu Gln His Val Val Thr
 225 230 235 240

Pro Ala Leu Glu Arg Val Ile Glu Ala Asn Thr Tyr Leu Ser Gly Val
 245 250 255

Gly Phe Glu Ser Gly Gly Leu Ala Ala Ala His Ala Val His Asn Gly
 260 265 270

Leu Thr Ala Ile Pro Asp Ala His His Tyr Tyr His Gly Glu Lys Val
 275 280 285

Ala Phe Gly Thr Leu Thr Gln Leu Val Leu Glu Asn Ala Pro Val Glu
 290 295 300

Glu Ile Glu Thr Val Ala Ala Leu Ser His Ala Val Gly Leu Pro Ile
 305 310 315 320

Thr Leu Ala Gln Leu Asp Ile Lys Glu Asp Val Pro Ala Lys Met Arg
 325 330 335

Ile Val Ala Glu Ala Ala Cys Ala Glu Gly Glu Thr Ile His Asn Met
 340 345 350

Pro Gly Gly Ala Thr Pro Asp Gln Val Tyr Ala Ala Leu Leu Val Ala
 355 360 365

Asp Gln Tyr Gly Gln Arg Phe Leu Gln Glu Trp Glu
 370 375 380

BIBLIOGRAPHY

- Ackerman, R. S., Cozzarelli, R., Epstein, W. (1974) *J. Bact.* 119:357-362.
- Cameron, D. C. and C. L. Cooney (1986) *Bio/Technology* 4:651-654.
- Ferguson, G. P., Chacko, A. D., Lee, C., Booth I. R. (1996) *J. Bact.* 178:3957-3961.
- Franklin Associates, Ltd. (1994) "Life Cycle Assessment of Ethylene Glycol and Propylene Glycol Based Antifreeze," Franklin Associates, Prairie Village, Kans.
- Freedberg, W. B., Kistler, W. S., Lin, E. C. C. (1971) *J. Bact.* 108:137-144.
- Gait, A. J. "Propylene Oxide," In: E. G. Hancock (ed.), *Propylene and its Industrial Derivatives*, p. 273-297, John Wiley and Sons, New York, N.Y. (1973).
- Ghalambor, M. A.; Heath, E. C. (1962) *J. Biol. Chem.* 237:2427-2433.
- Hill, J. E., Myers, A. M., Koerner, T. J., Tzagoloff, A. (1986) *Yeast* 2:163-167.
- Hopper, D. J., and Cooper, R. A. (1972) *Biochem J.* 128:321-329.
- Kadner, R. J., Murphy, G. P., Stephens, C. M. (1992) *J. Gen. Microbio.* 138:2007-2014.
- Kluyver and Schnellen (1937) *Enzymologia* 4:7-12.
- Koob, M. D., Shaw, A. J., and Cameron, D. C. (1994) *Proc. N.Y. Acad. Sci.* 745:1-3.
- Obradors, N., Badia, J., Baldoma, L., and Aguilar, J. (1988) *J. Bact.* 170:2159-2162.
- Old, S. E., Sato, S., Kador, P. F., and Carper, D. A. (1990) *Proc. Natl. Acad. Sci.* 87:4942-4945.
- Percy, D. S. and Harrison, D. H. T. (1996) Cloning, Expression and Characterization of Methylglyoxal Synthase from *Escherichia coli*. *American Society for Biochemistry and Molecular Biology Meeting Abstract, Protein Structure Section*, No. 1367, Jun. 2-6, 1996.
- Sambrook, Fritsch, and Maniatis (1986) "Molecular Cloning, A Laboratory Manual," 2nd. Ed.
- Sato, S., Old, S., Carper, D., and Kador, P. F. (1995) *Enzymology and Molecular Biology of Carbonyl Metabolism* 5, p. 259-268, H. Weiner et al. (Eds.), Plenum Press, New York.
- Sawada, H.; Takagi, Y. (1964) *Biochim. Biophys. Acta*, 92:26-32.
- Simon, E. S., Whitesides, G. M., Cameron, D. C., Weitz, D. J., and Cooney, C.L. (1987) *J. Org. Chem.* 52:4042-4044.
- Sridhara, S.; Wu, T. T. (1969) *J. Biol. Chem.* 244:5233-5238.

Tran-Din, K. and G. Gottschalk (1985) *Arch. Microbiol.* 142:87-92.

What is claimed is:

1. A method of producing 1,2-propanediol by fermentation of sugars comprising: culturing a recombinant microorganism which expresses recombinant enzyme activity selected from the group consisting of recombinant aldose reductase activity, recombinant glycerol dehydrogenase activity, recombinant methylglyoxal synthase activity, recombinant pyridine nucleotide transferase activity, and combinations thereof in a medium containing a sugar carbon source other than a 6-deoxyhexose sugar, wherein the recombinant microorganism is cultured aerobically, whereby the sugar carbon source is metabolized by the recombinant microorganism into 1,2-propanediol.
2. The method of claim 1, wherein a recombinant *E. coli* is cultured.
3. The method of claim 1, wherein a recombinant microorganism transformed with a transformation vector containing a gene sequence selected from the group consisting of SEQ. ID. NO: 3, SEQ. ID. NO: 6, SEQ. ID. NO: 7, SEQ. ID. NO: 10, and combinations thereof, is cultured.
4. The method of claim 1, wherein a recombinant microorganism transformed with a transformation vector containing a gene sequence selected from the group consisting of SEQ. ID. NO: 3, SEQ. ID. NO: 6, SEQ. ID. NO: 7, SEQ. ID. NO: 10, and combinations thereof, the gene sequence operationally linked to one or more promoter sequences whereby transcription of the gene sequence is controlled, is cultured.
5. The method of claim 4, wherein the promoter sequence is selected from the group consisting of lac, trc, tac, and phoA.
6. The method of claim 1, wherein a microorganism lacking enzyme activity selected from the group consisting of triose phosphate isomerase activity, glyoxalase I activity, and combinations thereof, is cultured.
7. The method of claim 6, wherein *E. coli* is cultured.
8. The method of claim 6, wherein *E. coli* strain AA200 is cultured.
9. The method of claim 1, wherein the recombinant microorganism is cultured in a medium containing a sugar carbon source selected from the group consisting of arabinose, fructose, galactose, glucose, lactose, maltose, sucrose, xylose, and combinations thereof.
10. The method of claim 1, further comprising the step of isolating the 1,2-propanediol formed.

* * * * *