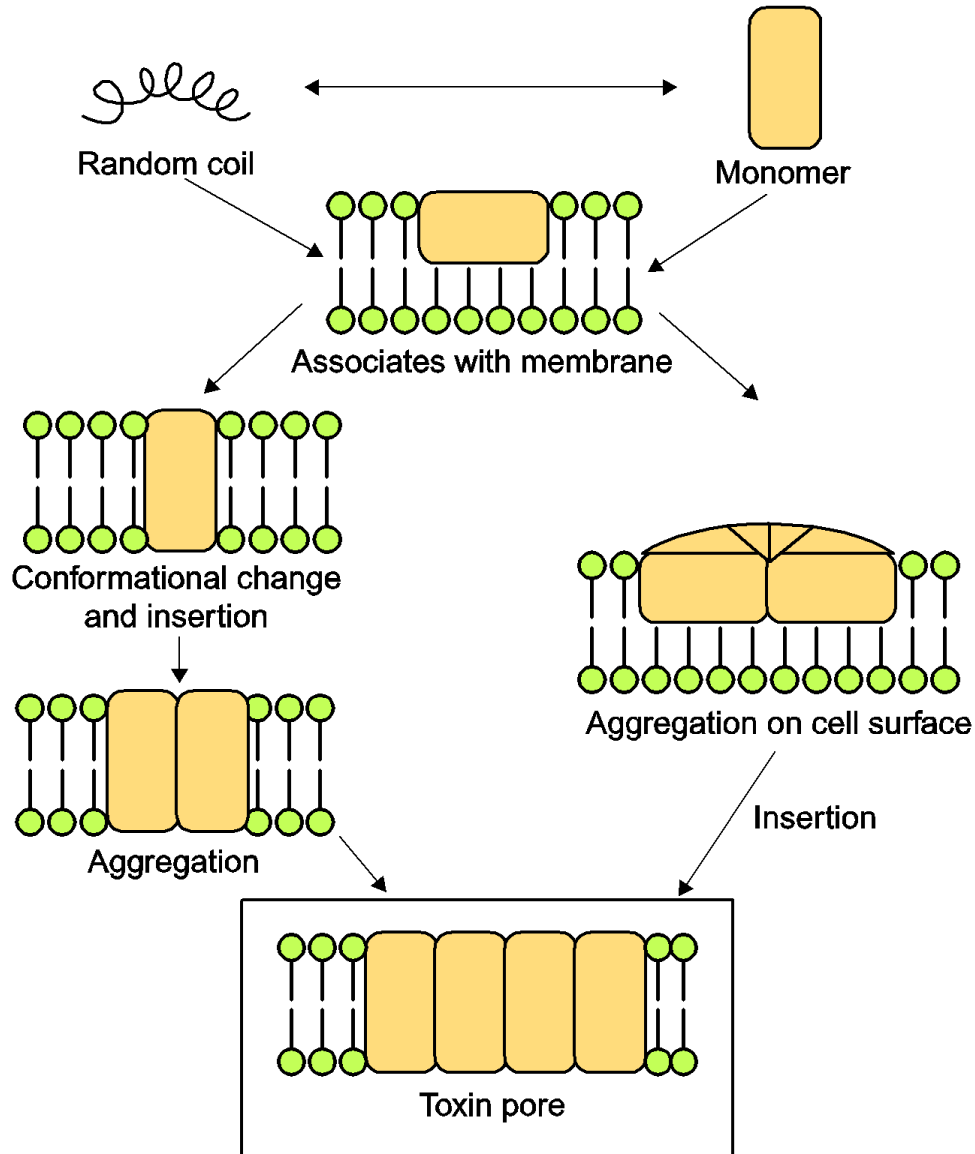
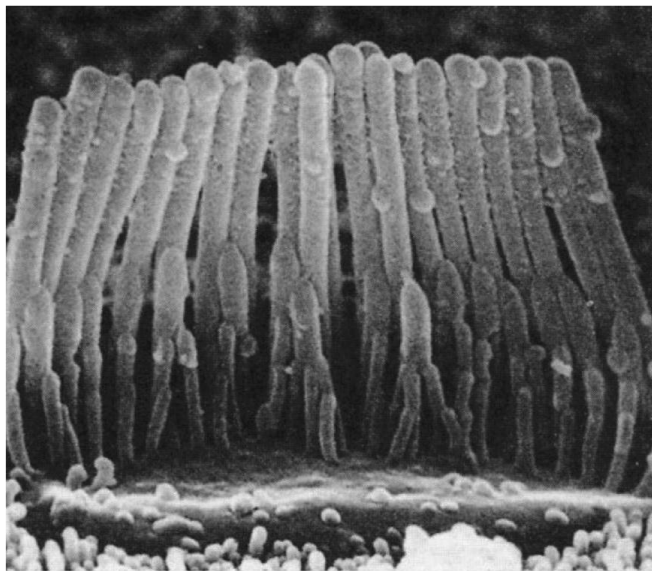


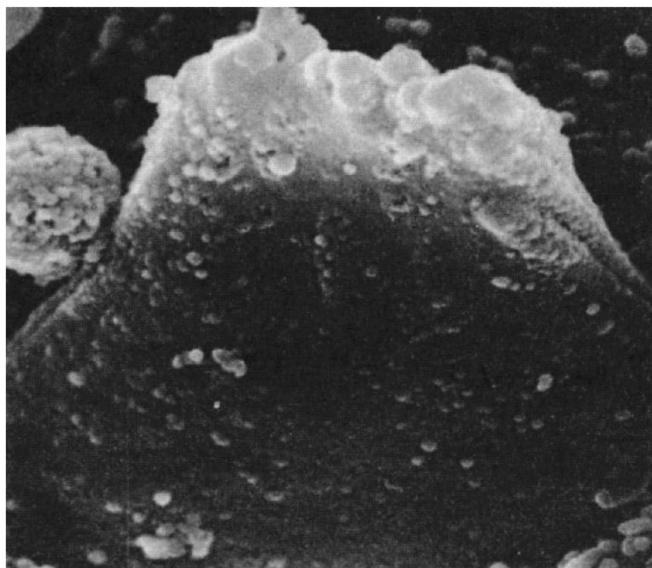
Chapter 08



f08-01-9780123971883

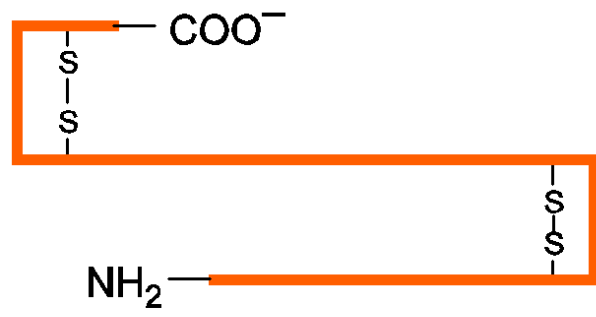


(a)



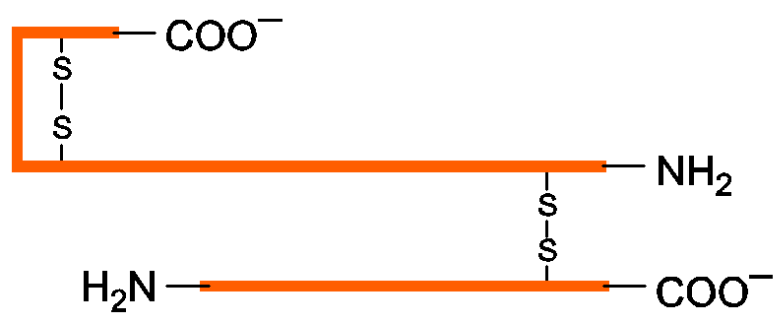
(b)

f08-02-9780123971883



Intact toxin

Proteolysis

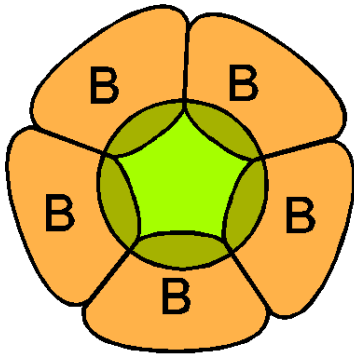


Nicked toxin

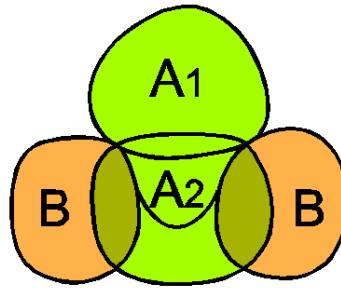
↓ Thiols



f08-03-9780123971883

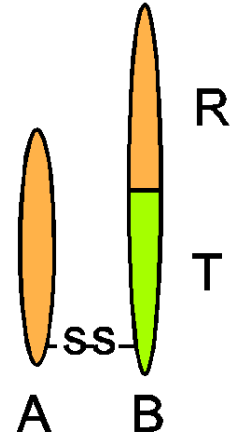


(a) plan

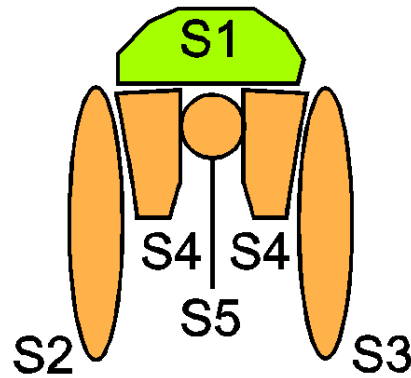


(b) elevation

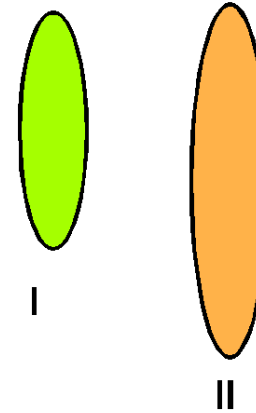
Cholera toxin



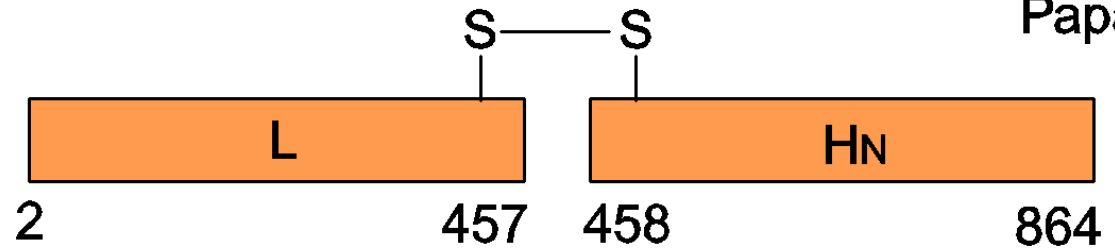
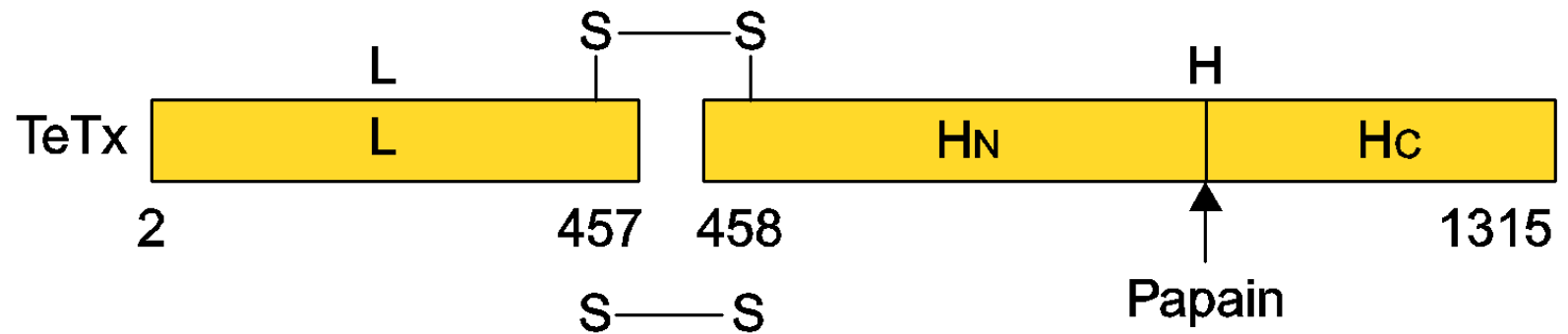
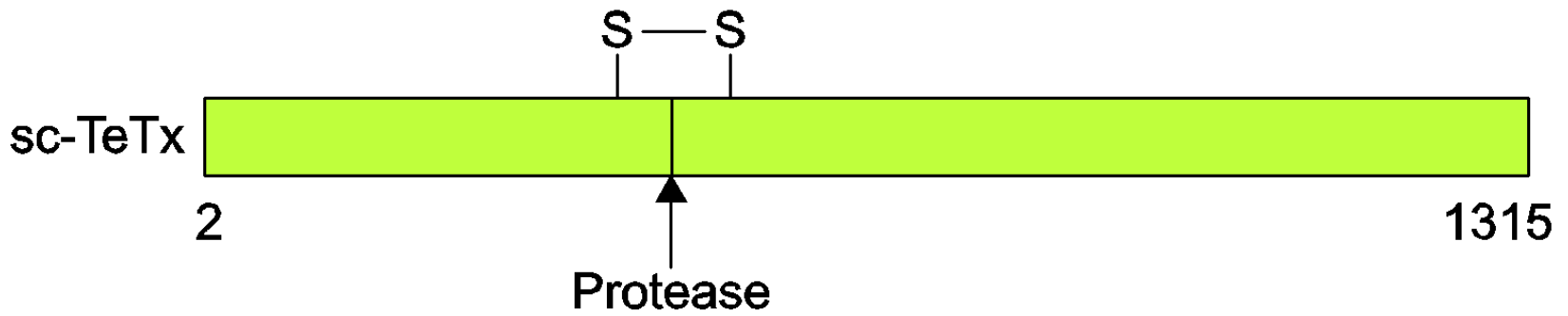
Diphtheria toxin



Pertussis toxin

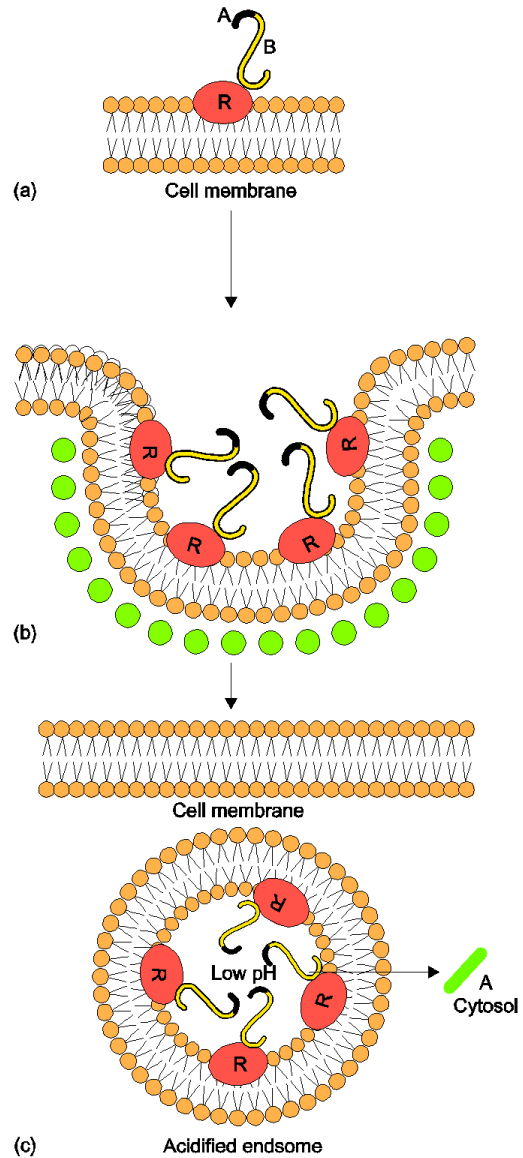


Botulinum C2 toxin

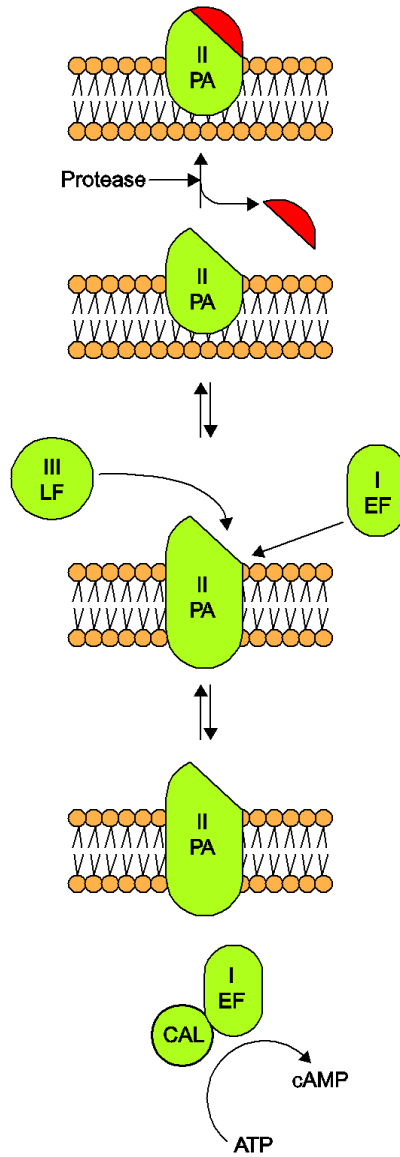


L-H_{N(458-864)} TeTx

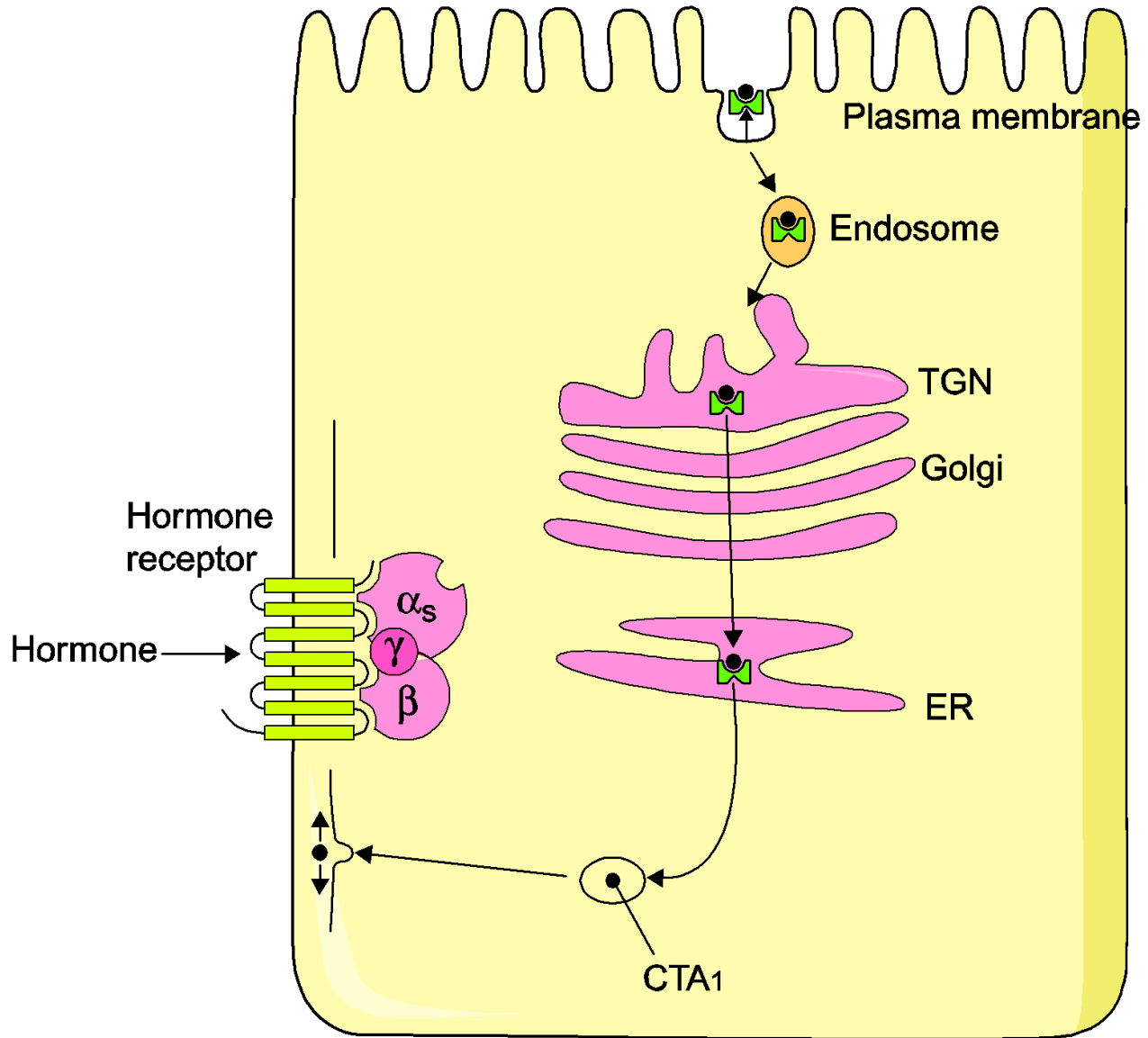
f08-05-9780123971883



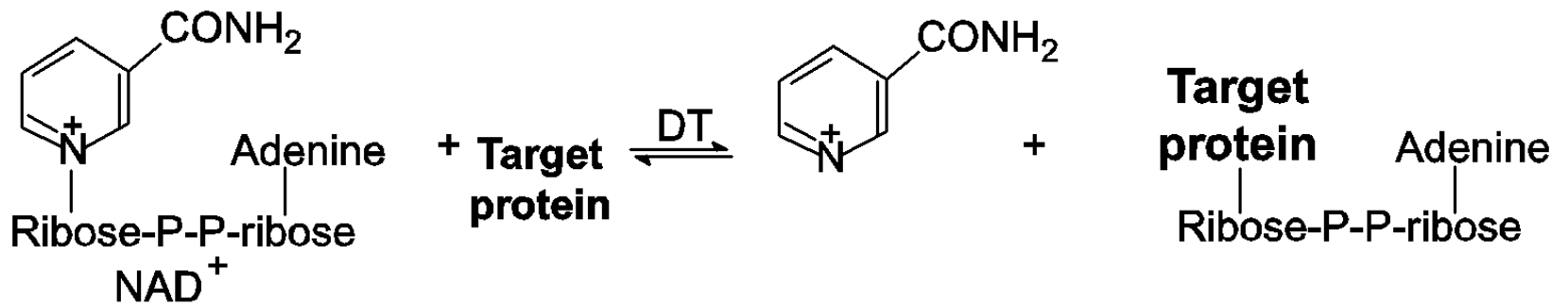
f08-06-9780123971883



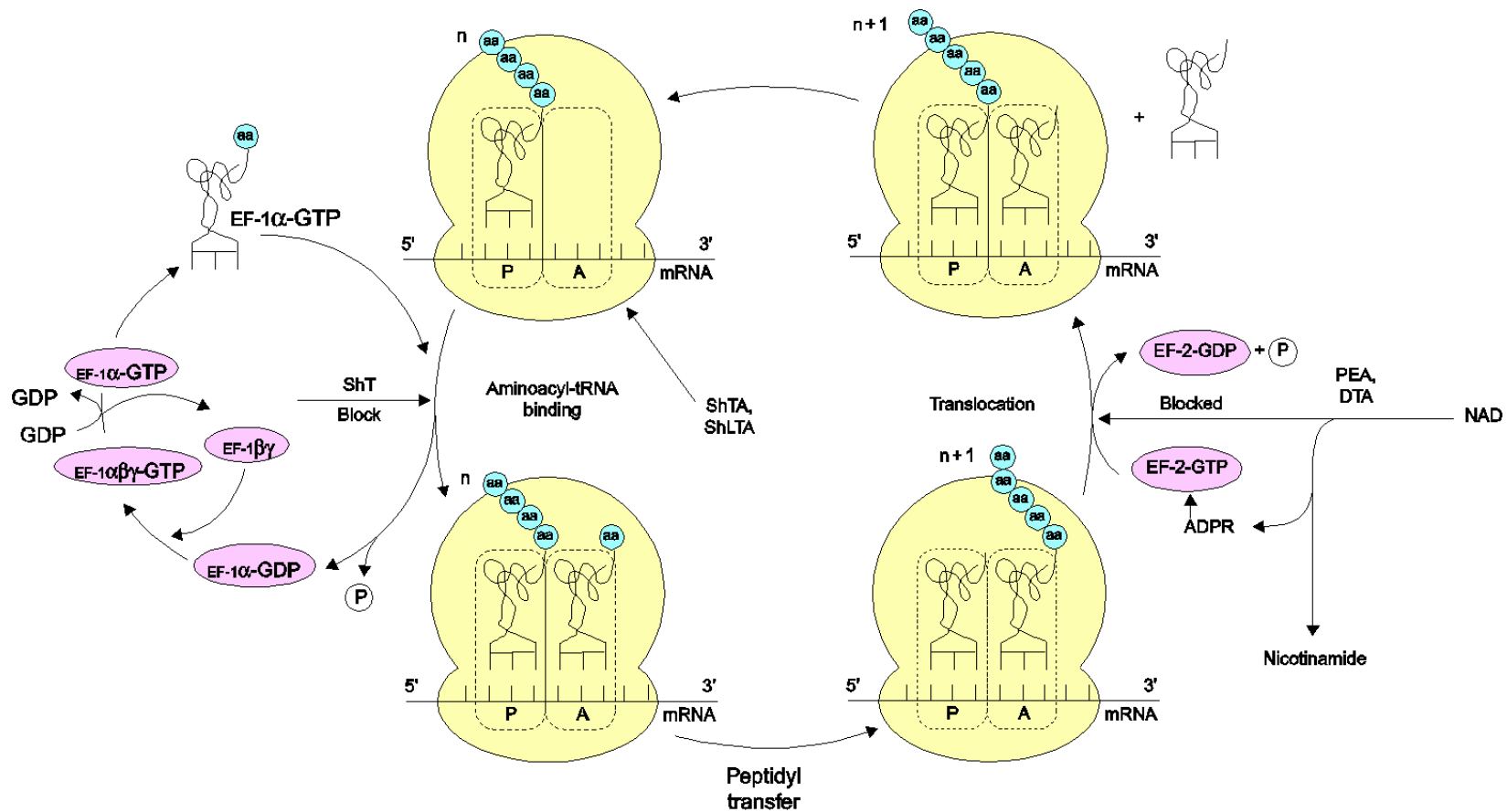
f08-07-9780123971883



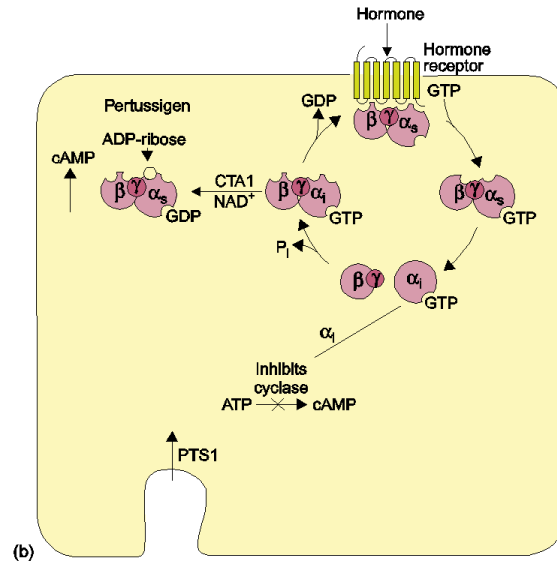
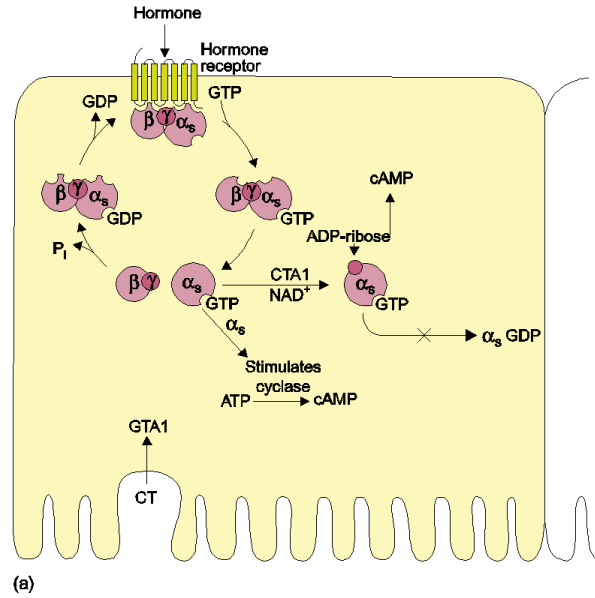
f08-08-9780123971883



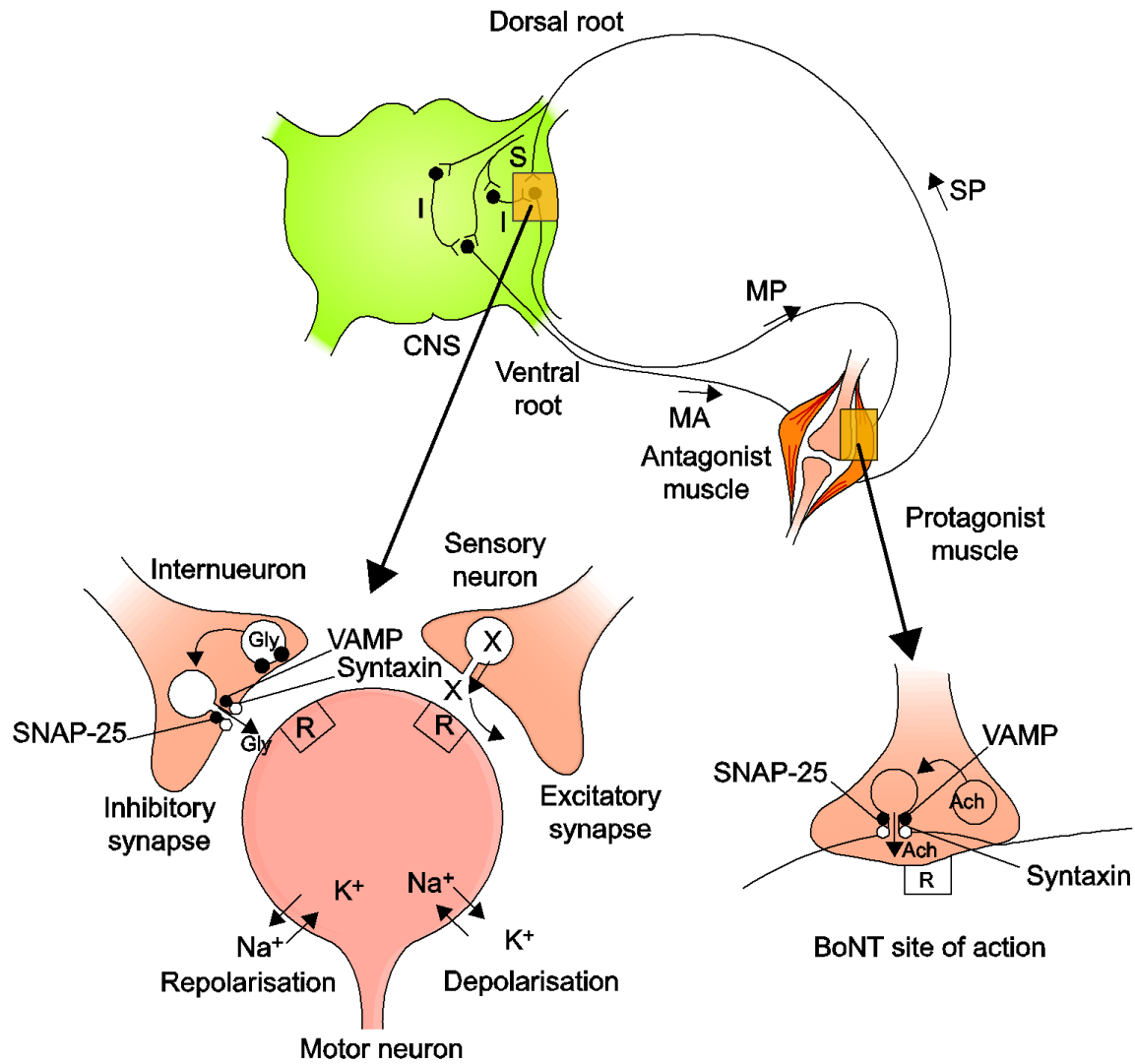
f08-09-9780123971883



f08-10-9780123971883

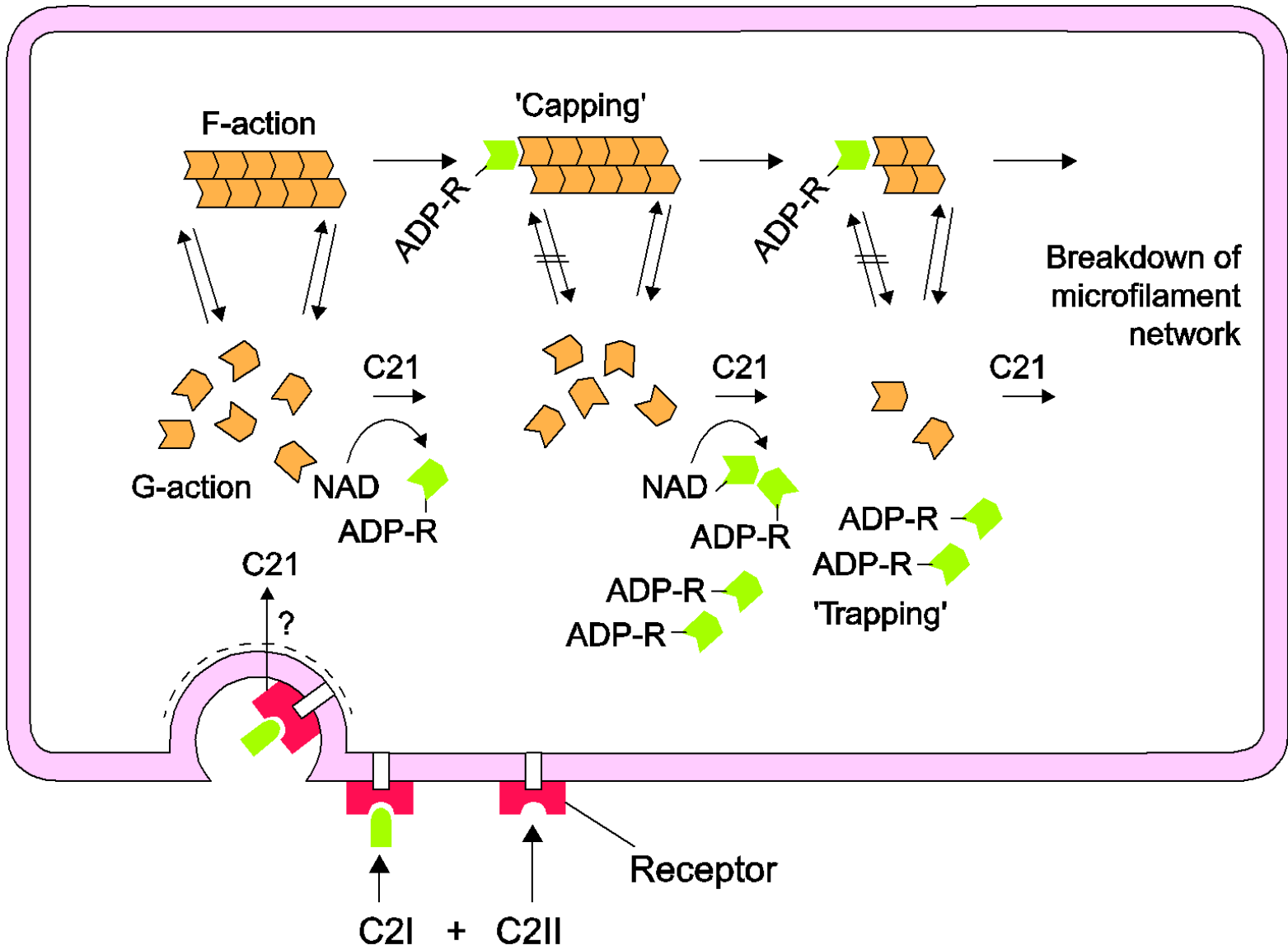


f08-11-9780123971883

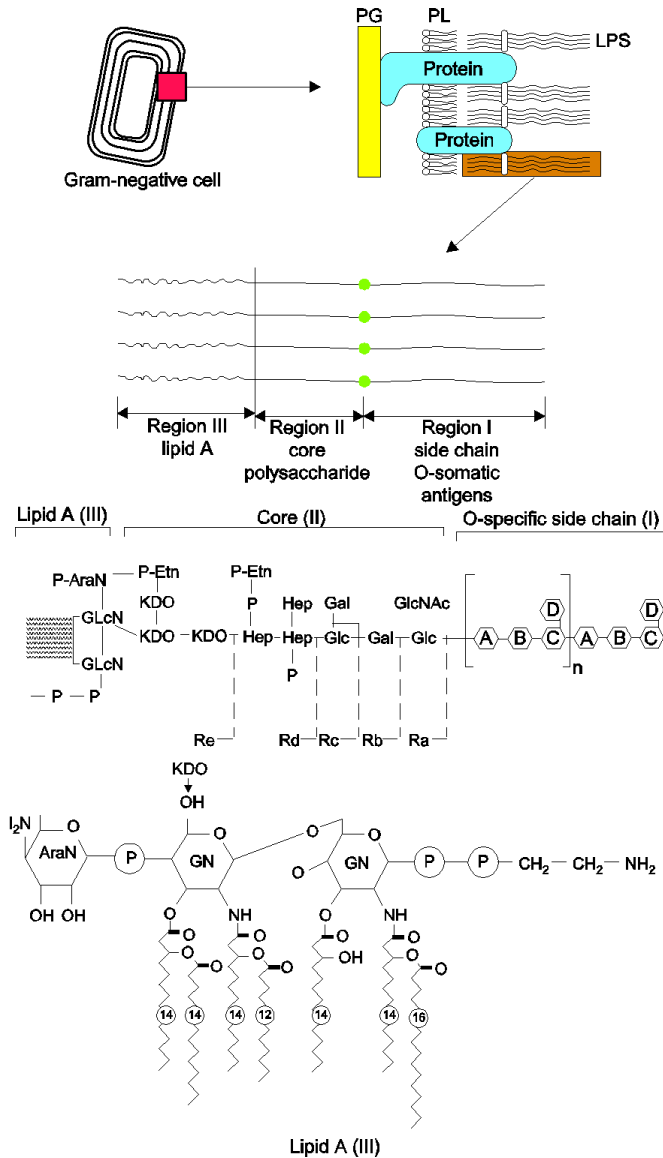


TeTx site of action

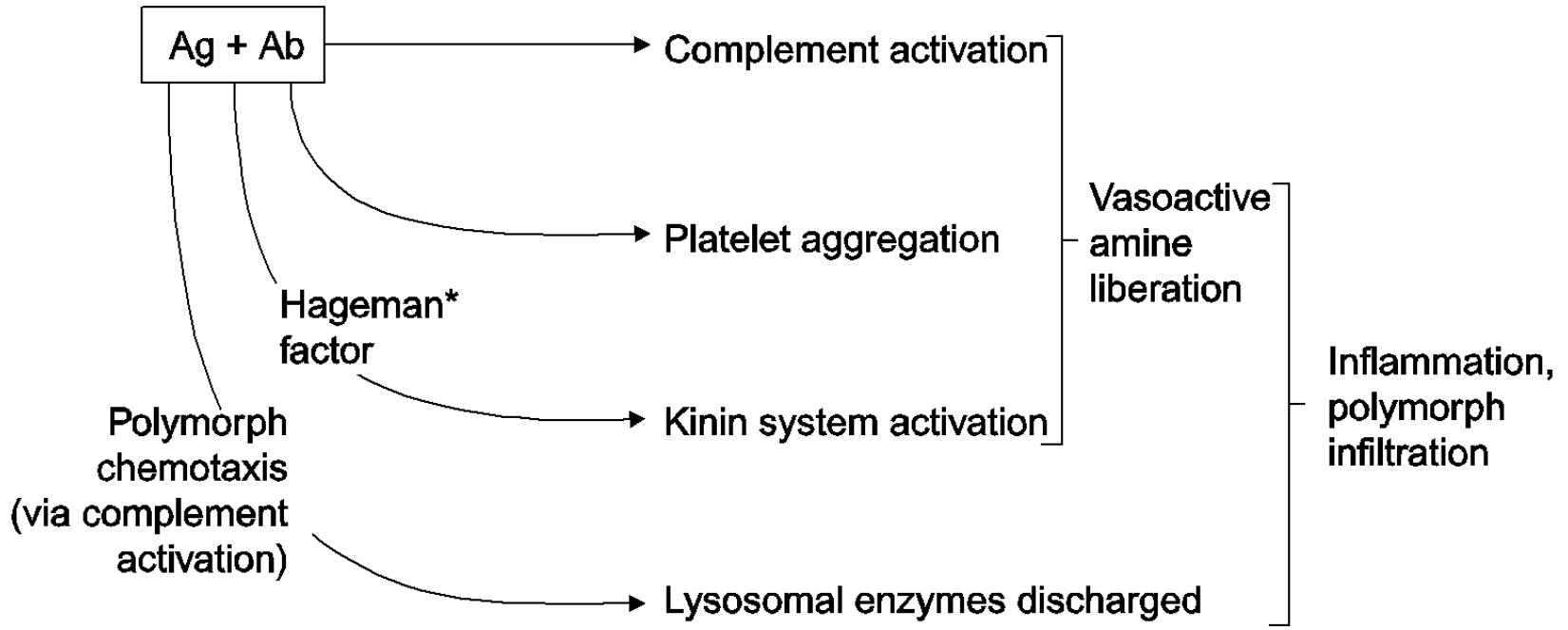
f08-12-9780123971883



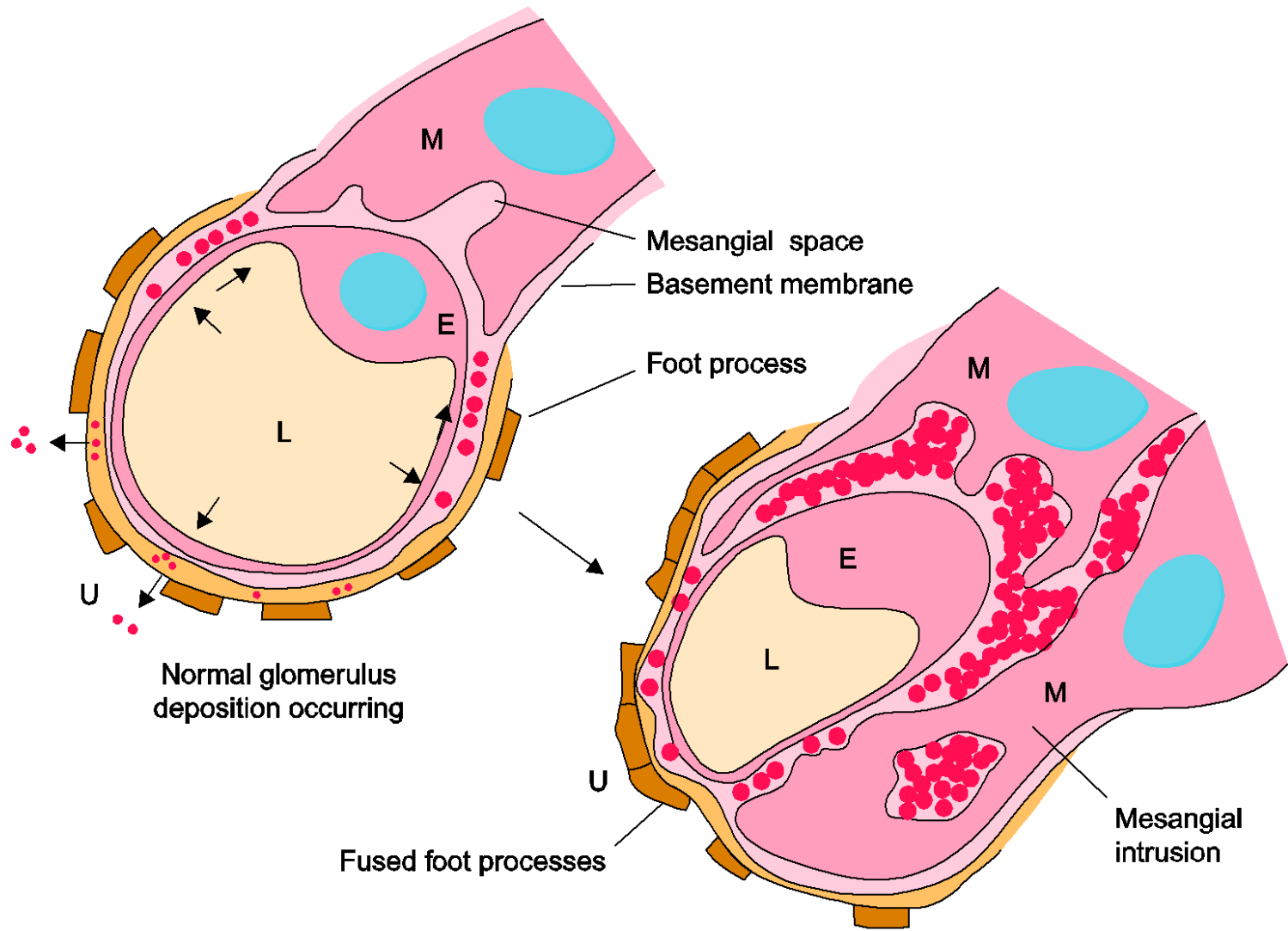
f08-13-9780123971883



f08-14-9780123971883

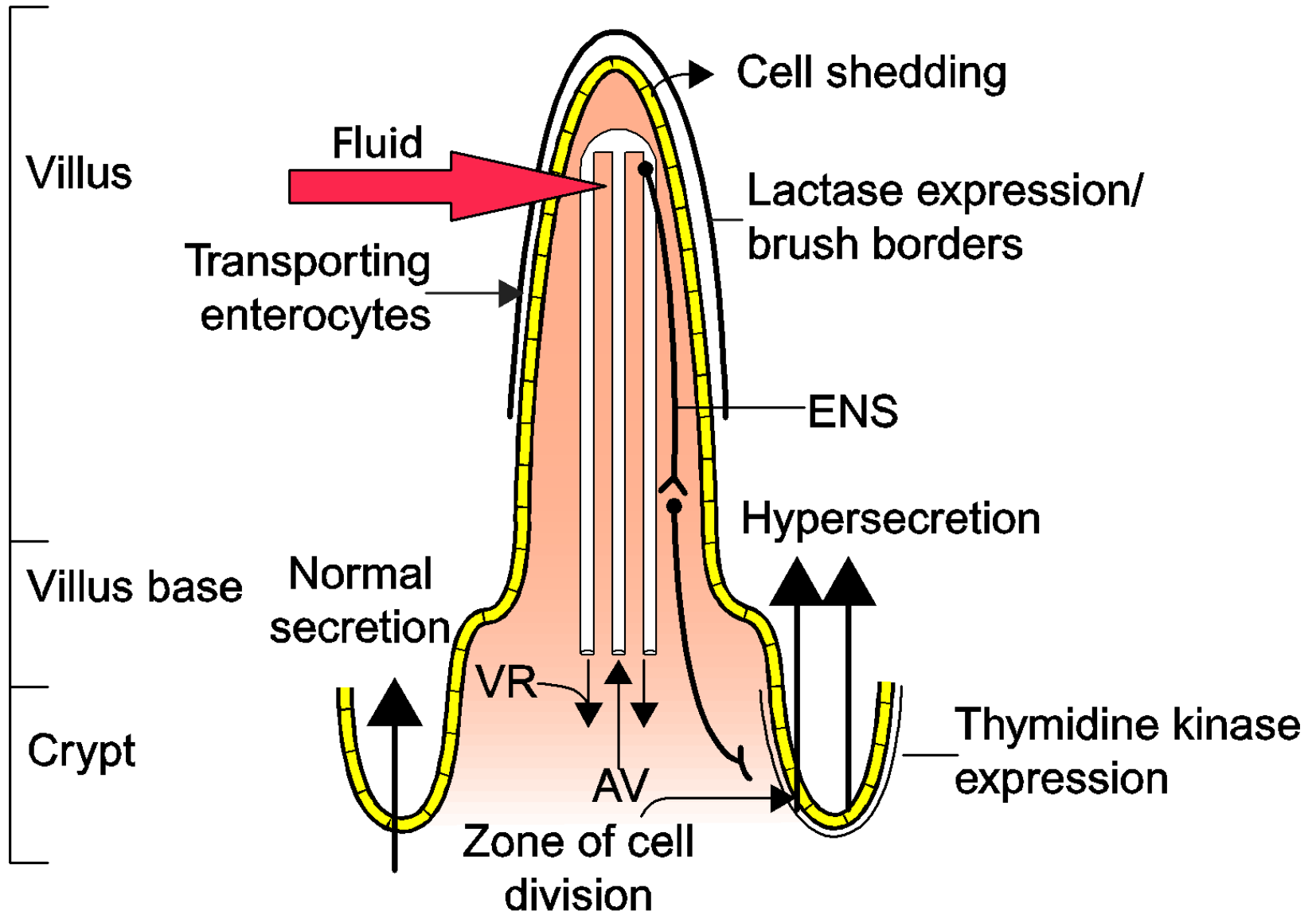


f08-15-9780123971883

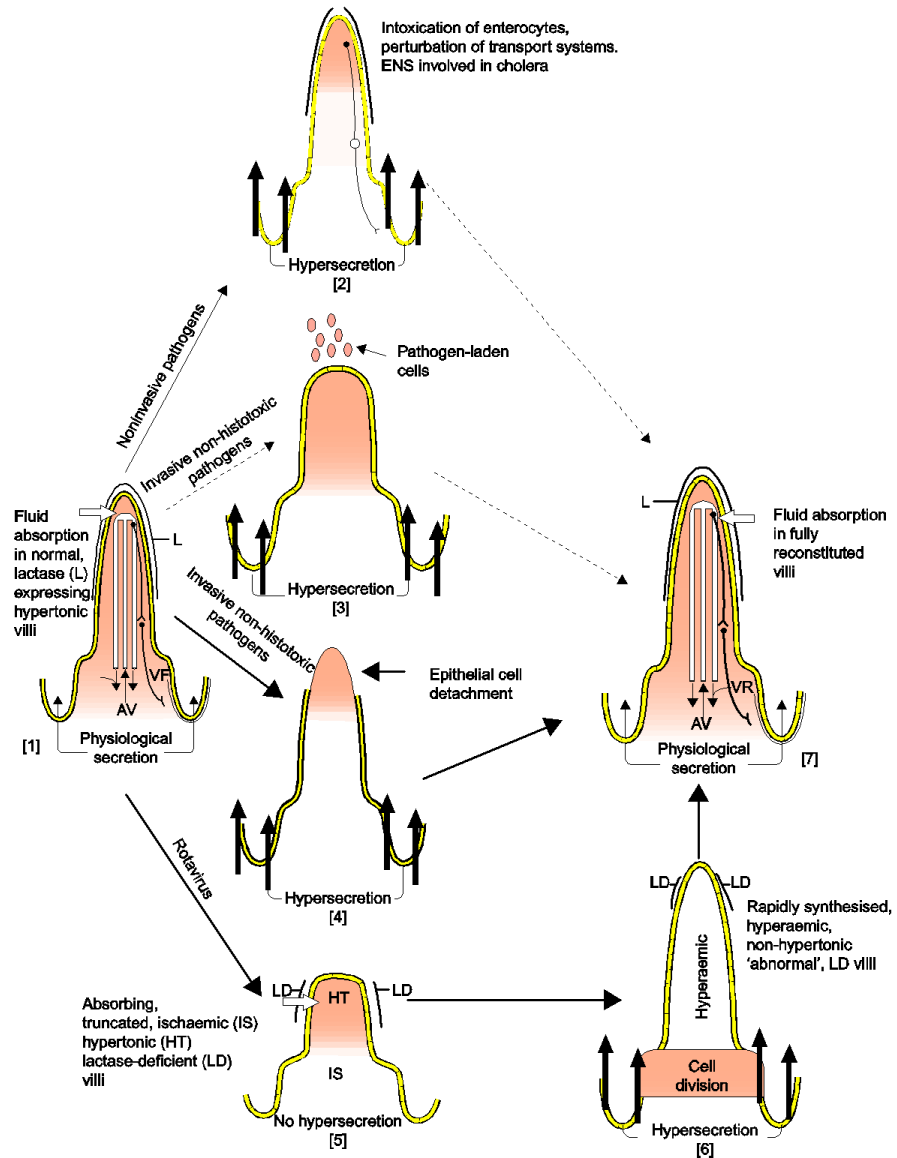


Glomerulonephritis

f08-16-9780123971883



f08-17-9780123971883



f08-18-9780123971883