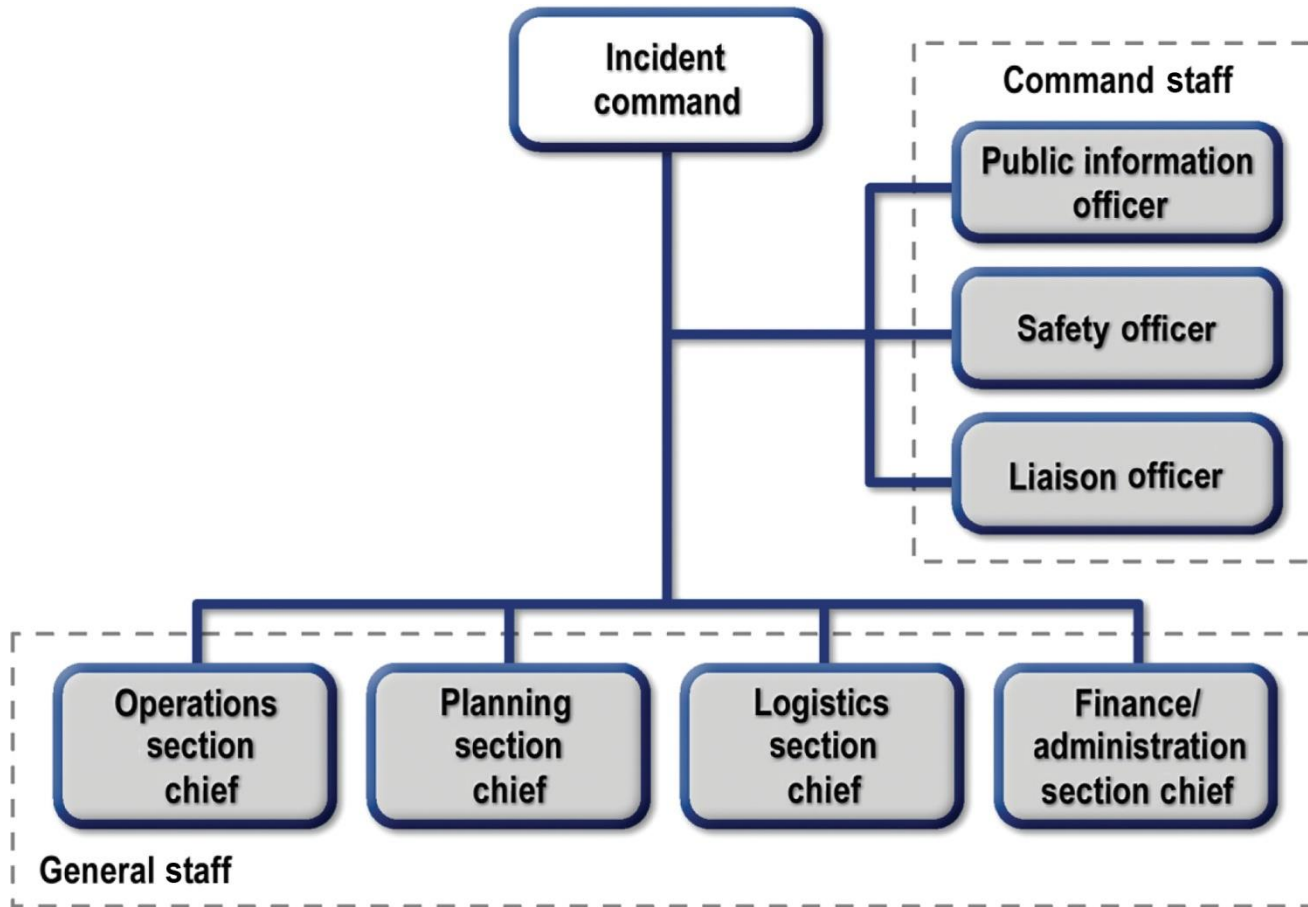


# Chapter-5

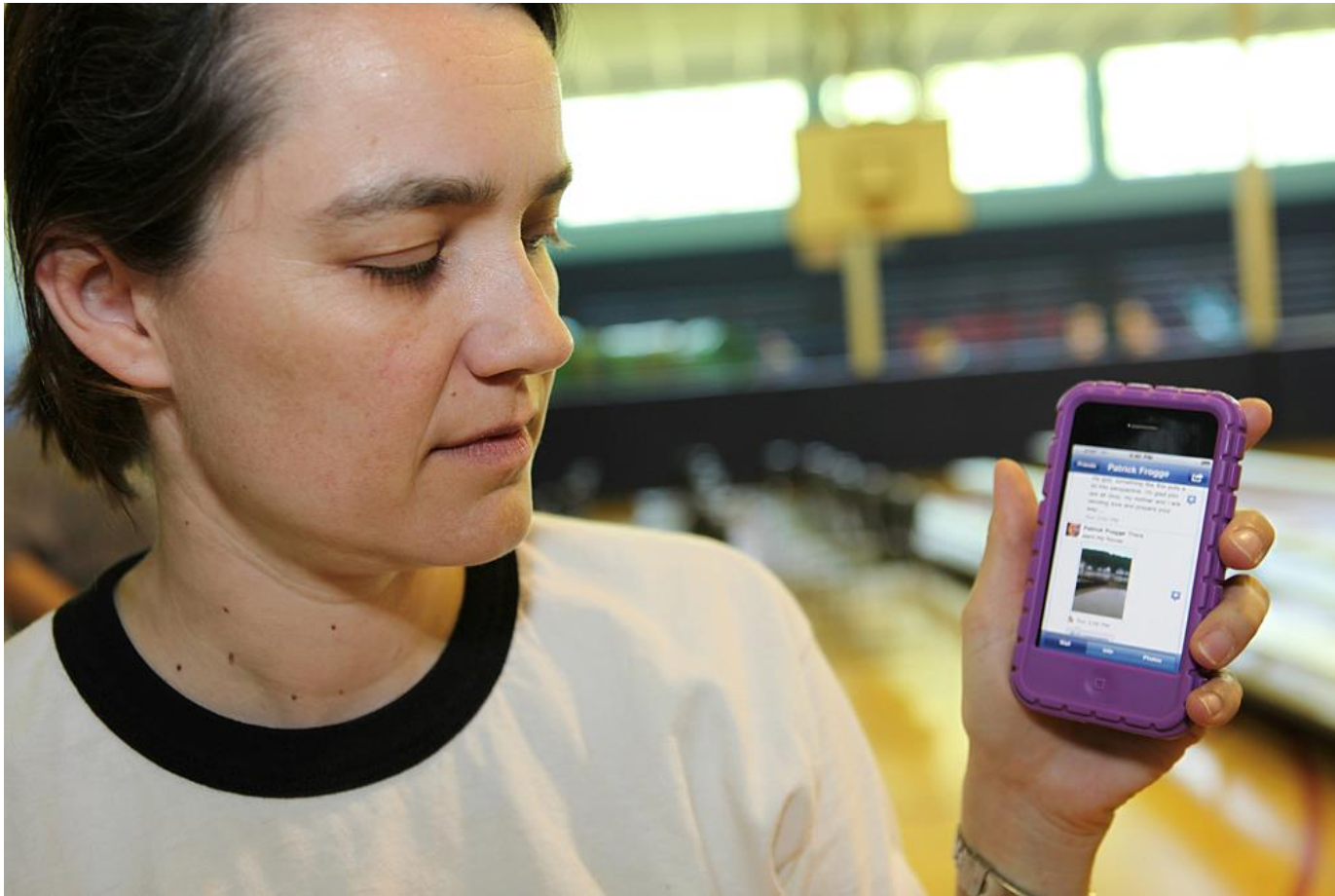
# Communications



**FIGURE 5.1:** Incident Command System: the command staff and the general staff. FEMA. National Incident Management System. December 2008.



**FIGURE 5.2:** LaPlace, Louisiana, Sep. 7, 2012—Mar Tobiason, Red Cross shelter volunteer, shows a group of children a YouTube video featuring children living in a temporary shelter. The American Red Cross and FEMA are working with local, state, and other federal agencies to assist residents affected by Hurricane Isaac. Photo by Patsy Lynch/FEMA.



**FIGURE 5.3:** Nashville, Tennessee, May 5, 2010—Nashville resident and disaster survivor Amy Frogge uses social media to display pictures that document the flood and damage to her home in Davidson County. FEMA responded to the severe storms and flooding that damaged or destroyed thousands of homes in May 2010 across Tennessee. David Fine/FEMA.



**FIGURE 5.4:** “Hurricane #Sandy: Socializing Traditional Media” Social Infographic courtesy mindjet.com: <http://bit.ly/2enzEmV>.



- **New Jersey Office of Emergency Management** October 29, 2012
- Regarding travel on the road, please keep these points in mind:
- 
- - Don't go on the roads unless you are essential to the disaster response.
- 
- - There is no ban on driving, BUT there are travel restrictions in many counties e.g., Atlantic, Cumberland, Camden. The Parkway is closed from Exit 38 South and there is the possibility of expanding the closure.
- 
- - Regardless of current rain condition...[See More](#) 19023177 Like · Comment



**New Jersey Office of Emergency Management** shared NOAA NWS National Hurricane Center's photo.  
October 29, 2012

At 3 pm EDT, Hurricane Sandy was centered just 85 miles southeast of Atlantic City, New Jersey, moving toward the northwest at 28 mph. Landfall is expected this evening along the extreme southern New Jersey coastline or central Delaware. Get the latest at [www.hurricanes.gov](http://www.hurricanes.gov) and, for local impacts, go to [www.weather.gov](http://www.weather.gov)





**New Jersey Office of Emergency Management**

SEG Cares @PSEGcares

PSE&G crews are working hard to restore power to customers without electricity.

We know it's difficult and appreciate your patience

1445611

Like · Comment





## New Jersey Office of Emergency Management

October 31, 2012

### RECOVERY BEGINS TODAY

Recovery begins today. We acknowledge and respect our feelings of sorrow and loss. At the same time, we draw on our resilience and remember that we are all in this together.

For now, a few items that residents are asking about:

- We'll have more about recovery programs after President Obama's visit and tour of impacted areas with Governor Christie. For now, a coupl...[See More](#)

2626084

[Like](#) · [Comment](#)



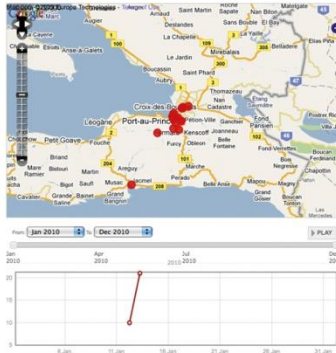
Haiti
English (GB)

[SUBMIT AN INCIDENT](#)

HOME
REPORTS
SUBMIT AN INCIDENT
GET ALERTS
CONTACT US
HOW TO HELP

ABOUT US | A PROPOS DE | ENFOMASYON

FILTERS • [REPORTS](#) NEWS PICTURES VIDEO TODOS VIEWS • [CALENDAR](#) TIME



Jan 2010 - Dec 2010

CATEGORY FILTER

ALL CATEGORIES

- 1 D'URGENCE | EMERGENCY
- 2 MENACES | THREATS
- 3 LIGNES VITALES | VITAL LINES
- 4 REPONSE | RESPONSE
- 5 AUTRE | OTHER
- 6 NOUVELLES DE SURVIVANTS | SURVIVOR NEWS

**How to report**

1. By sending a message to 447824802524
2. By sending an email to [haiti@ushahidi.com](mailto:haiti@ushahidi.com)
3. By sending a tweet with the hashtags #haiti or #haitquake
4. By filling a form at the website

**Incidents (from the map, listed in chronological order)**

TITLE	LOCATION	DATE
Looking for the Dorce Family	labane, haiti	Jan 13 2010
Looking for James Colin Aboume	rue mahai	Jan 13 2010
More photos and videos of earthquake aftermath	Port-au-Prince	Jan 13 2010
Hospital Francais	Port-au-Prince	Jan 13 2010
Hospital Universitario De Haiti	Hospital Universitario De Haiti	Jan 13 2010
MSF Teams Set up Clinics to Treat Injured	Port-au-Prince	Jan 13 2010
Over 100 UN personnel trapped in collapsed...	UN Headquarters, Port-au-Prince	Jan 13 2010
The National Palace, Before & After	National Palace, Avenue de la Liberte Port-au-Prince, Haiti	Jan 13 2010
Karibe Hotel Collapsed	Karibe Hotel, Avenue 7 Pignon-Ville, HAITI (near Union School) A map to the location of the hotel is here: <a href="http://www.karibehotel.com/haibehotellocation.asp">http://www.karibehotel.com/haibehotellocation.asp</a>	Jan 13 2010
MPF Airport	MPF Airport, Port-Au-Prince	Jan 13 2010

[View More...](#)

**Official & mainstream news**

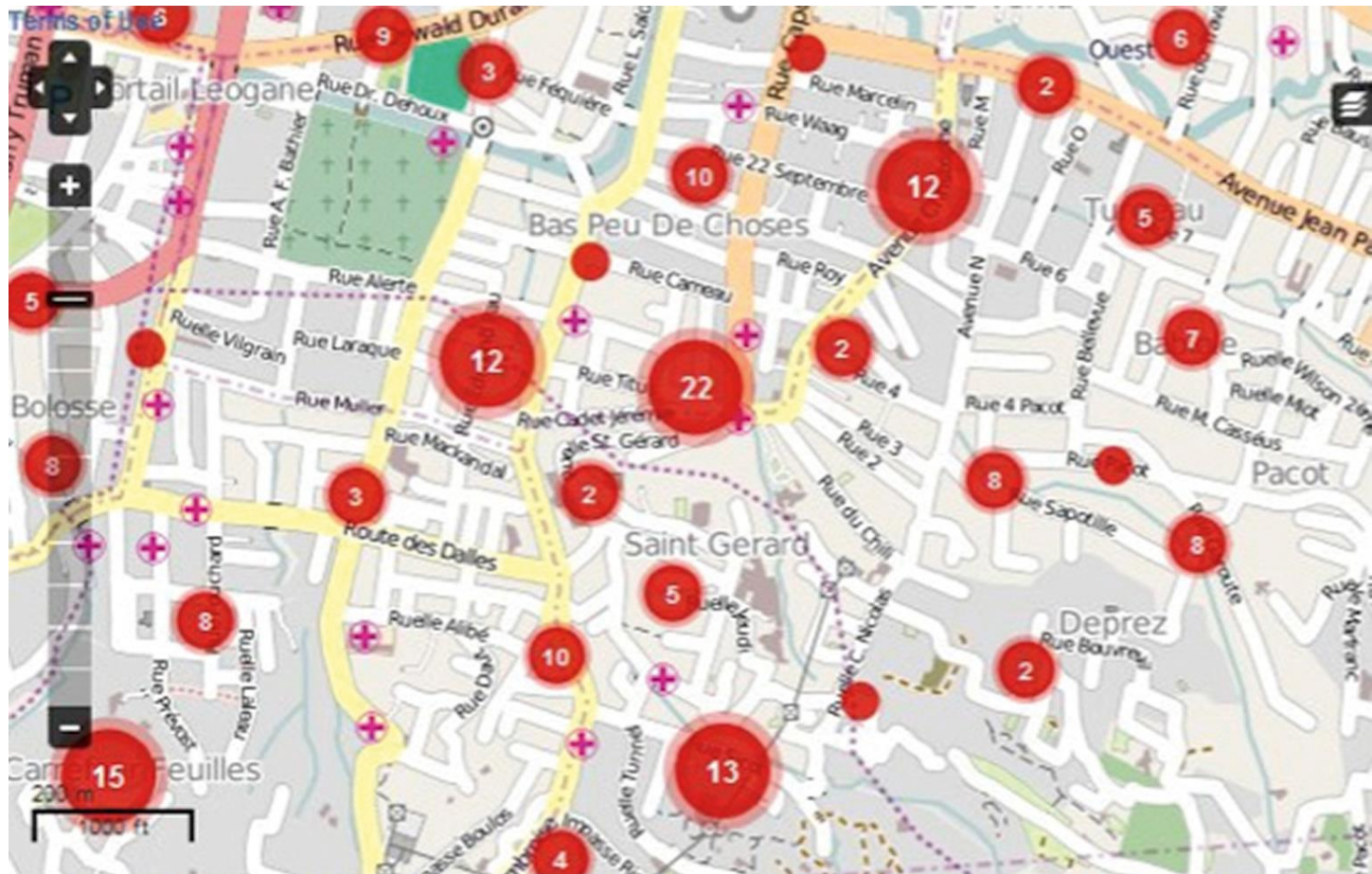
TITLE	SOURCE	DATE
IMF says stable ready to aid Haiti	ReliefWeb	Jan 13 2010
"Thousands dead" in Haiti quake	BBC Lead Story	Jan 13 2010
Haiti: Thousands feared dead in massive...	ReliefWeb	Jan 13 2010
FACTBOX:Haiti quake had shatter zones...	ReliefWeb	Jan 13 2010
American Red Cross pledges initial \$1 million...	ReliefWeb	Jan 13 2010
CRUZ ROLA ACCIONANDO ANTE TERREMOTO EN HAITI...	ReliefWeb	Jan 13 2010
Personnel to be Deployed to Haiti to Asses...	ReliefWeb	Jan 13 2010
Government Mobilizing Relief Supplies to...	ReliefWeb	Jan 13 2010
Disaster Risk Reduction in Haiti	ReliefWeb	Jan 13 2010
Disaster Risk Reduction in Haiti	ReliefWeb	Jan 13 2010

[View More...](#)

[Home](#) | [Report an Incident](#) | [Get Alerts](#) | [How to Help](#) | [About](#) | [Contact Us](#) | [Blog](#)  
 Copyright © 2009 Ushahidi.com. All Rights Reserved.

powered by Ushahidi

[Provide Feedback](#)



Crisis Map of Haiti represents the most comprehensive and up-to-date map available to the humanitarian community <http://haiti.usshahidi.com/>

4:00 PM Jan 22nd via web



**CraigatFEMA**

Craig Fugate

http://haiti.ushahidi.com/main#

In Haiti? Text **4636** (International: **+44 762.480.2524**) on Digoel or Comcel with your location and need. Report emergencies and missing persons.

**Haiti**  
The 2010 Earthquake in Haiti

Ushahidi-Haiti @ **Tufts UNIVERSITY**

Haitian Diaspora Community: We need your help! [Help Us Help Haiti](#) >

Announcement: Peace Dividend Marketplace can link you with goods and services in PAP: call 29 41 10 01

**+ SUBMIT INCIDENT**

Search Reports Here:  [DOWNLOAD REPORTS \(3105\)](#) [REPORTS RSS](#)

**HOME** REPORTS SUBMIT INCIDENT GET ALERTS CONTACT US HOW TO HELP ABOUT

FILTERS **REPORTS** NEWS PICTURES VIDEO TODO VIEWS **CLUSTERS**

Terms of Use

Scale = 1 : 217K -72.38377, 18.48352 EPSG:900913

**+ CATEGORY FILTER**

- ALL CATEGORIES**
- 1. URGENCES | EMERGENCY**
- 2. MENACES | THREATS**
- 3. URGENCES LOGISTIQUES | VITAL LINES**
- 4. SECOURS | RESPONSE**
- 5. AUTRE | OTHER**
- 6. NOUVELLES DE PERSONNES | PERSONS NEWS**

Find:  [Next](#) [Previous](#)  Highlight all  Match case [Find more on the web](#)

4636: Demande aide 4636 je suis perdu  
enbas une maison 2 etage no 147 av  
christophe chanel cafour Ph. 38553243  
[#rescuehaiti](#)

4:18 PM Jan 23rd from web



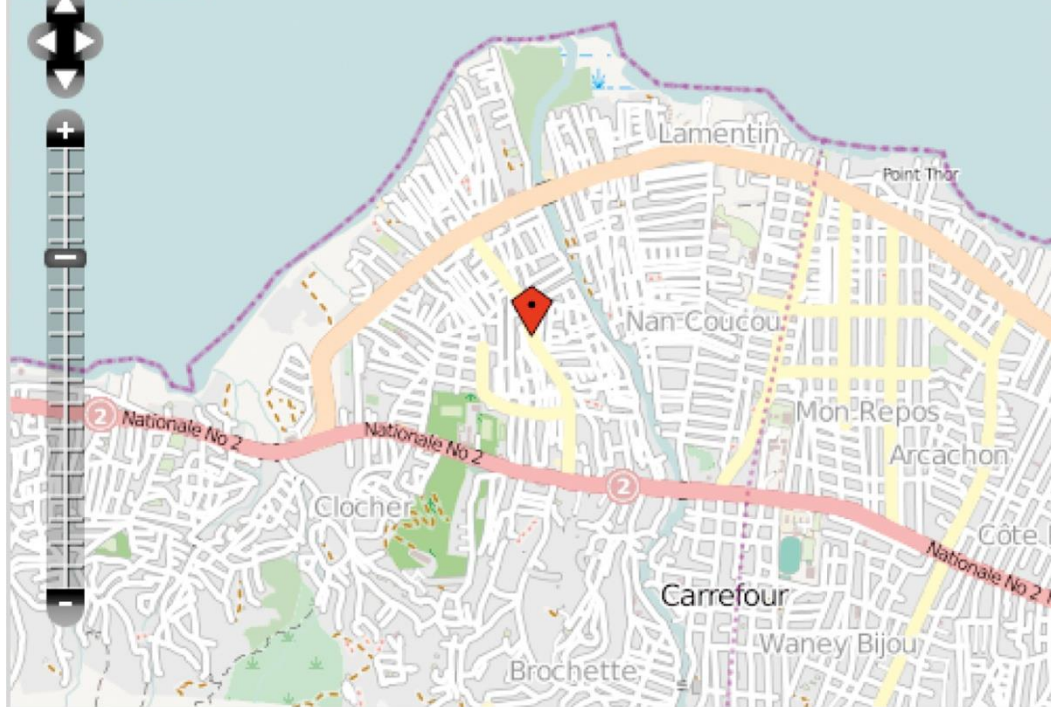
**Natalija\_L**  
Natalija L

## Incident Location

Latitude: 18.544389

Longitude: -72.416961

-72.43541, 18.53389



*City, State and/or Country*

FIND LOCATION

\* If you can't find your location, please click on the map to pinpoint the correct location.



